

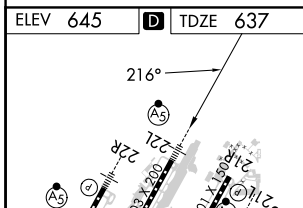
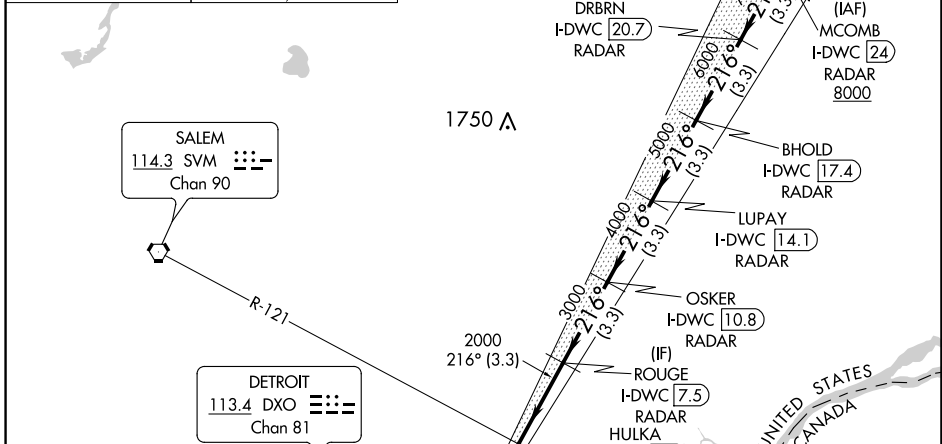
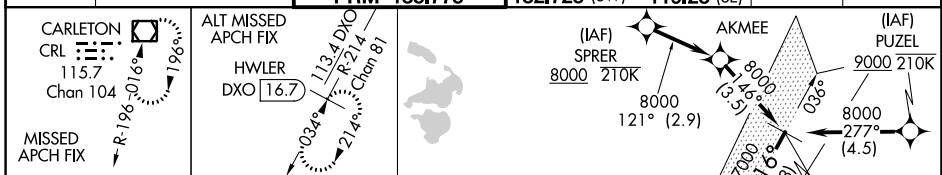
ILS PRM RWY 22L (CLOSE PARALLEL)

| | | |
|---|------------------------|---|
| LOC/DME I-DWC 110.7 Chan 44 | APP CRS 216° | Rwy Idg TDZE Apt Elev 12003 637 645 |
|---|------------------------|---|

DETROIT METROPOLITAN WAYNE COUNTY (DTW)

| | | |
|--|-------|--|
| RNAV 1-GPS. | MALSR | MISSED APPROACH: Climb to 4000 on heading 216° and CRL VOR/DME R-025 to CRL VOR/DME and hold, continue climb-in-hold to 4000. |
| RNAV 1-DME/DME/IRU or RADAR required for procedure entry. DME or RADAR required. | | |
| <p>Simultaneous approach authorized. Use of FD or AP required during simultaneous operations. Dual VHF comm required. See additional requirements on AAUP. Procedure NA when glide slope not available.</p> <p>*RVR 1800 authorized with use of FD or AP or HUD to DA.</p> | | |

| | | | | | |
|--------------------------|--|---|--|---------------------------|-------|
| D-ATIS 133.675 | DETROIT APP CON 124.05 284.0 | METRO TOWER 128.125 317.725 PRM 135.775 | GND CON 121.8 (NW) 119.45 (NE) 119.25 (SE) | CLNC DEL 120.65 | CPDLC |
|--------------------------|--|---|--|---------------------------|-------|



| | | | | | | | | |
|------------|----------------------|-----------------------|-----------------------|------------------------|------------------------|------------------------|------------------------|----------------------|
| ELEV 645 | TDZE 637 | | | | | | | |
| | | CRL R-025 | CRL | OSKER I-DWC 10.8 RADAR | LUPAY I-DWC 14.1 RADAR | BHOLD I-DWC 17.4 RADAR | DRBRN I-DWC 20.7 RADAR | MCOMB I-DWC 24 RADAR |
| | | HULKA I-DWC 4.2 RADAR | ROUGE I-DWC 7.5 RADAR | LUPAY I-DWC 14.1 RADAR | BHOLD I-DWC 17.4 RADAR | DRBRN I-DWC 20.7 RADAR | MCOMB I-DWC 24 RADAR | |
| | | I-DWC DME ANTENNA | 2000 | 3000 | 4000 | 5000 | 6000 | 7000 |
| | | 4.3 NM | 3.3 NM | 3.3 NM | 3.3 NM | 3.3 NM | 3.3 NM | 3.3 NM |
| CATEGORY | A | B | C | D | | | | |
| S-ILS 22L* | 837/24 200 (200-1/2) | | | | | | | |

EC-1, 10 SEP 2020 to 08 OCT 2020

EC-1, 10 SEP 2020 to 08 OCT 2020