

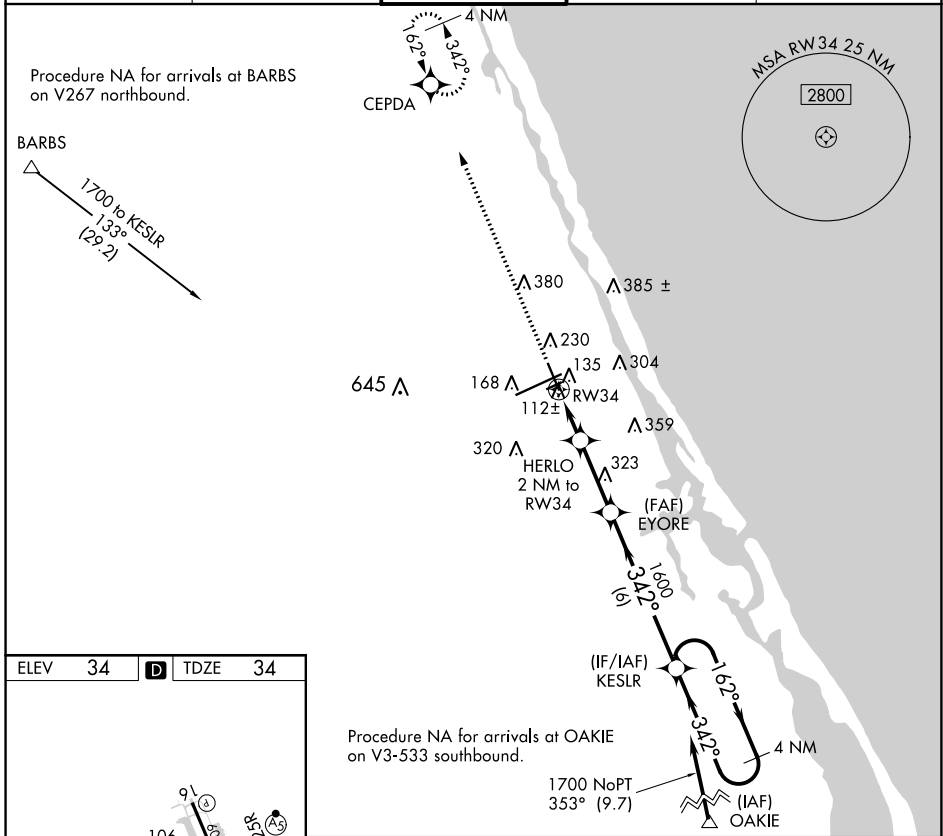
WAAS CH 78221 W34A	APP CRS 342°	Rwy Idg TDZE Apt Elev	6001 34 34
--	------------------------	-----------------------------	---------------------------------------

RNAV (GPS) RWY 34

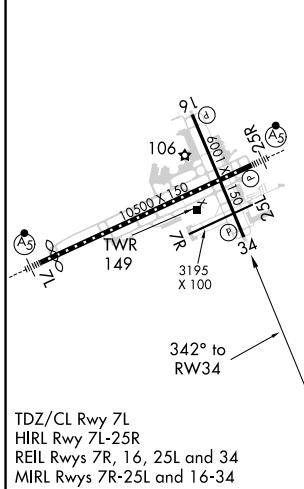
DAYTONA BEACH INTL (DAB)

RNP APCH.		MISSED APPROACH: Climb to 2000 direct CEPDA and hold.	
ASR Rwy 34 helicopter visibility reduction below 3/4 SM NA.			

ATIS 132.875	DAYTONA APP CON 125.8 269.075	DAYTONA TOWER 120.7 257.8	GND CON 121.9 348.6	CLNC DEL 119.3
------------------------	---	-------------------------------------	-------------------------------	--------------------------



ELEV 34	D	TDZE 34
---------	----------	---------



DAYTONA BEACH, FLORIDA
Amdt 2E 18JUL19

2000	CEPDA	VGSi and descent angles not coincident (VGSi Angle 3.00/TCH 50).		KESLR	4 NM Holding Pattern
↑	☀	HERLO 2 NM to RW34	EYORE	1600	1700
		700	3.00°	342°	162°
		TCH 45		←342°	
		2 NM	2.8 NM	6 NM	
CATEGORY	A	B	C	D	
LP MDA		380-1	346 (400-1)		
LNAV MDA		400-1	366 (400-1)		

29°11'N-81°03'W

DAYTONA BEACH INTL (DAB)

RNAV (GPS) RWY 34

SE-3, 10 SEP 2020 to 08 OCT 2020

SE-3, 10 SEP 2020 to 08 OCT 2020