

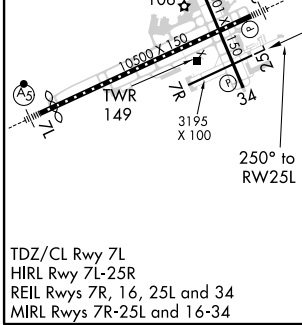
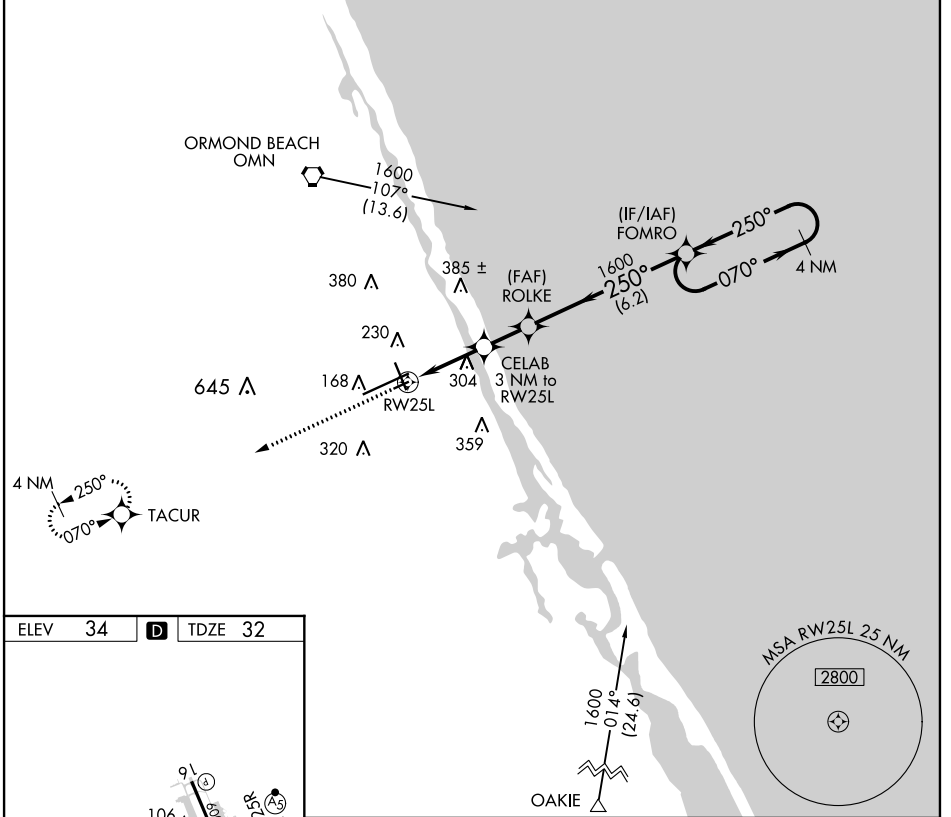
APP CRS	Rwy Idg	<b>3195</b>
<b>250°</b>	TDZE	<b>32</b>
	Apt Elev	<b>34</b>

# RNAV (GPS) RWY 25L

DAYTONA BEACH INTL (DAB)

RNP APCH.	MISSED APPROACH: Climb to 1700 direct TACUR and hold.
ASR Rwy 25L helicopter visibility reduction below ¾ SM NA.	

ATIS <b>132.875</b>	DAYTONA APP CON <b>125.8 269.075</b>	DAYTONA TOWER <b>120.7 257.8</b>	GND CON <b>121.9 348.6</b>	CLNC DEL <b>119.3</b>
------------------------	---	-------------------------------------	-------------------------------	--------------------------



1700	TACUR	ROLKE	FOMRO	4 NM Holding Pattern
↑	✦	✦	✦	✦
		CELAB 3 NM to RW25L		
		1020	1600	1600
		3.04°	070°	250°
		3 NM	1.8 NM	6.2 NM
CATEGORY	A	B	C	D
LNAV MDA	560-1	528 (600-1)	560-1½ 528 (600-1½)	NA

SE-3, 10 SEP 2020 to 08 OCT 2020

SE-3, 10 SEP 2020 to 08 OCT 2020