

LOC/DME I-HPI 109.9 Chan 36	APP CRS 238°	Rwy Idg TDZE Apt Elev	24L 9956 786 799	24R 9000 780 799
---	------------------------	-----------------------------	--	--

ILS or LOC RWY 24L

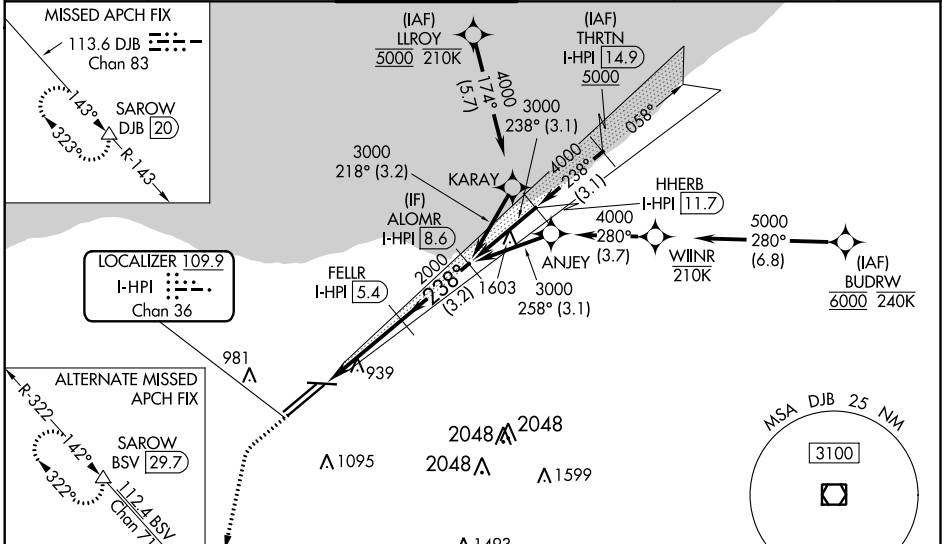
CLEVELAND-HOPKINS INTL (CLE)

DME required. Aircraft not DME/DME/IRU or GPS equipped - RADAR required for procedure entry. RNAV 1. From LLROY and BUDRW: RNAV 1-DME/DME/IRU or GPS required for procedure entry.

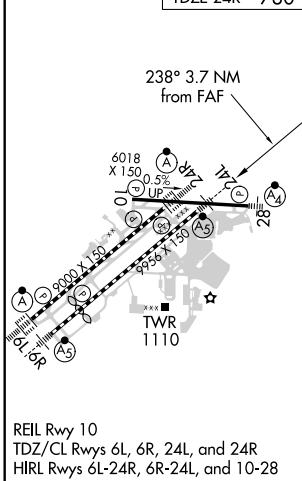
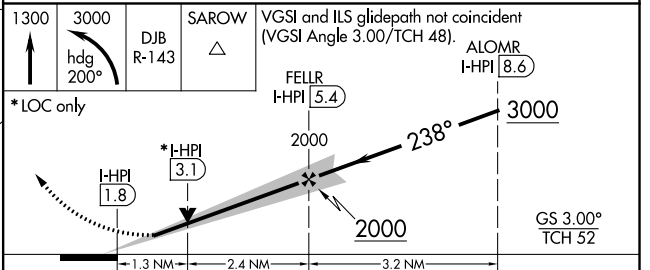
⚠ Circling Rwy 10 NA at night. Simultaneous approach authorized. Simultaneous operations require use of vertical guidance; maintain last assigned altitude until established on glide slope. Inop table does not apply to Sidestep 24R. For inop ALS, increase S-LOC 24L Cats C/D visibility to 1 3/8 SM.

Rwy 24L MALSR 	Rwy 24R ALSF-2 	MISSED APPROACH: Climb to 1300 then climbing left turn to 3000 on heading 200° and DJB VOR/DME R-143 to SAROW/DJB 20 DME and hold.
----------------------	-----------------------	---

D-ATIS ARR 127.85 DEP 132.375	CLEVELAND APP CON 124.0 346.325	CLEVELAND TOWER 124.5 273.45	GND CON 121.7 273.45	CLNC DEL 125.05 273.45	CPDLC
---	---	--	--------------------------------	----------------------------------	-------



ELEV 799	TDZE 24L 786
	TDZE 24R 780



CATEGORY	A	B	C	D
S-ILS 24L	986/18 200 (200-1/2)			
S-LOC 24L	1260/24 474 (500-1/2)	1260/50 474 (500-1)		
SIDESTEP 24R	1260/55 480 (500-1)	1260-1 1/2 480 (500-1 1/2)	1420-2 480 (500-2)	
C CIRCLING	1420-1 621 (700-1)	1420-1 3/4 621 (700-1 3/4)	1420-2 621 (700-2)	

EC-2, 10 SEP 2020 to 08 OCT 2020

EC-2, 10 SEP 2020 to 08 OCT 2020