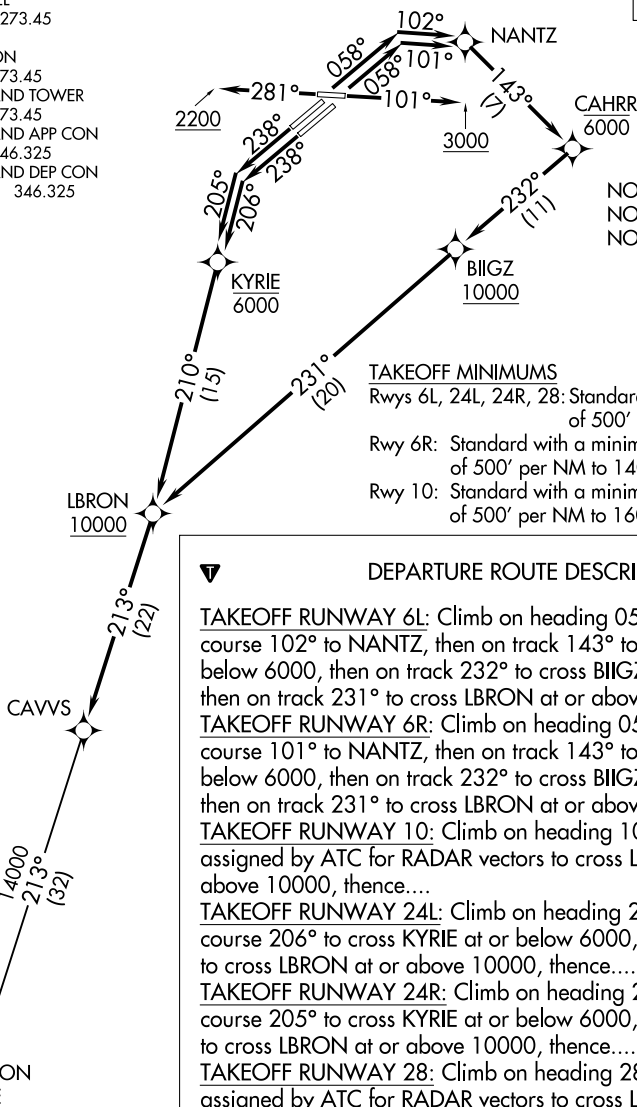


# CAVVS FOUR DEPARTURE (RNAV)

D-ATIS  
132.375  
CLNC DEL  
125.05 273.45  
CPDLC  
GND CON  
121.7 273.45  
CLEVELAND TOWER  
124.5 273.45  
CLEVELAND APP CON  
124.0 346.325  
CLEVELAND DEP CON  
135.875 346.325

**TOP ALTITUDE:  
14000**



NOTE: RADAR required.  
NOTE: RNAV 1.  
NOTE: DME/DME/IRU or GPS required.

### TAKEOFF MINIMUMS

Rwys 6L, 24L, 24R, 28: Standard with a minimum climb of 500' per NM to 1300.  
Rwy 6R: Standard with a minimum climb of 500' per NM to 1400.  
Rwy 10: Standard with a minimum climb of 500' per NM to 1600.

### DEPARTURE ROUTE DESCRIPTION

**TAKEOFF RUNWAY 6L:** Climb on heading 058° to intercept course 102° to NANTZ, then on track 143° to cross CAHRR at or below 6000, then on track 232° to cross BIIGZ at or above 10000, then on track 231° to cross LBRON at or above 10000, thence....  
**TAKEOFF RUNWAY 6R:** Climb on heading 058° to intercept course 101° to NANTZ, then on track 143° to cross CAHRR at or below 6000, then on track 232° to cross BIIGZ at or above 10000, then on track 231° to cross LBRON at or above 10000, thence....  
**TAKEOFF RUNWAY 10:** Climb on heading 101° to 3000, then as assigned by ATC for RADAR vectors to cross LBRON at or above 10000, thence....  
**TAKEOFF RUNWAY 24L:** Climb on heading 238° to intercept course 206° to cross KYRIE at or below 6000, then on track 210° to cross LBRON at or above 10000, thence....  
**TAKEOFF RUNWAY 24R:** Climb on heading 238° to intercept course 205° to cross KYRIE at or below 6000, then on track 210° to cross LBRON at or above 10000, thence....  
**TAKEOFF RUNWAY 28:** Climb on heading 281° to 2200, then as assigned by ATC for RADAR vectors to cross LBRON at or above 10000, thence....

....on track 213° to CAVVS, then on (transition). Maintain 14000, expect filed altitude ten minutes after departure.

APPLETON TRANSITION (CAVVS4.APE)

NOTE: Chart not to scale.

# CAVVS FOUR DEPARTURE (RNAV)

(CAVVS4.CAVVS) 26MAR20

EC-2, 10 SEP 2020 to 08 OCT 2020

EC-2, 10 SEP 2020 to 08 OCT 2020