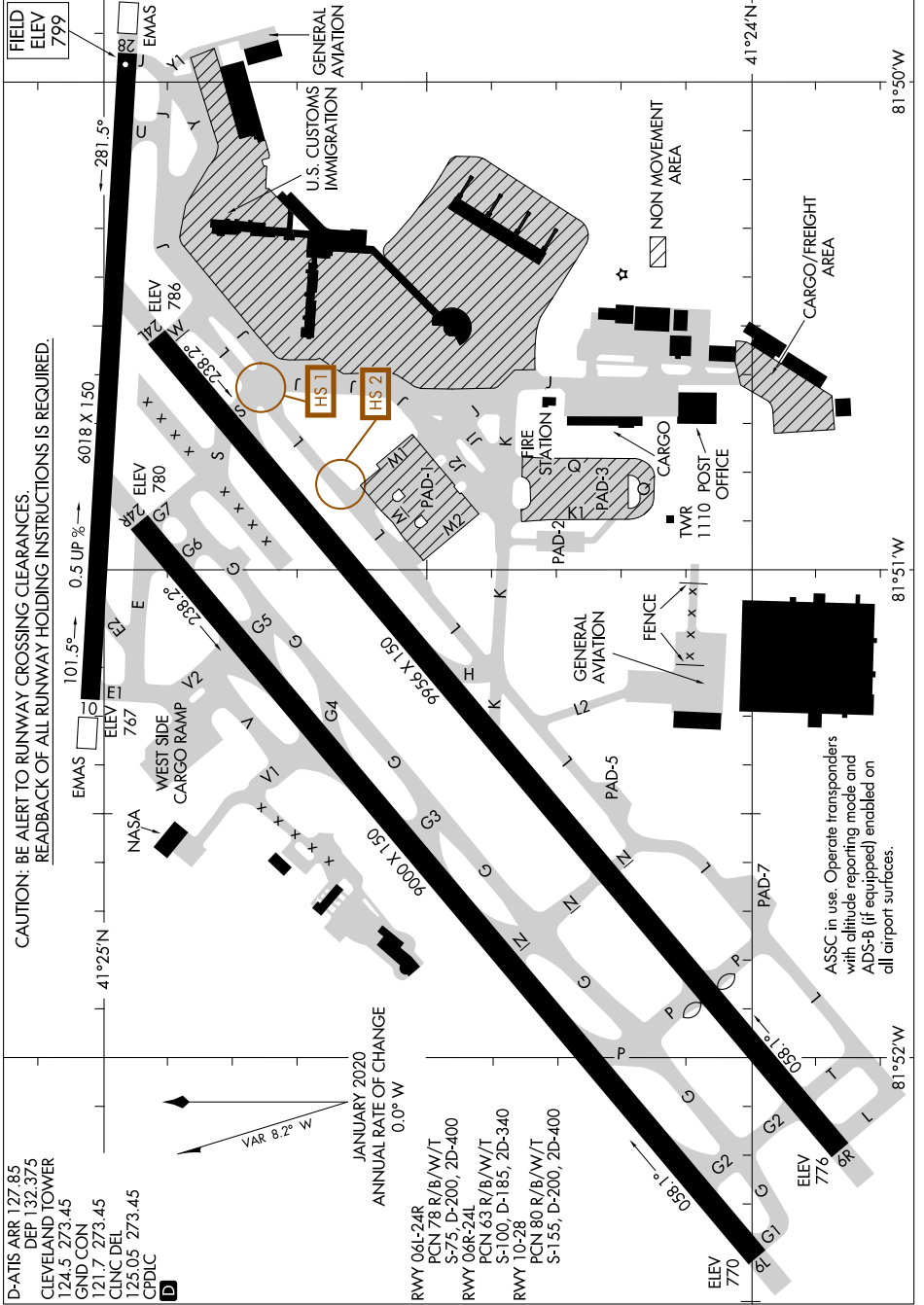


AIRPORT DIAGRAM

AL-84 (FAA)

CLEVELAND-HOPKINS INTL (CLE)
CLEVELAND, OHIO

EC-2, 10 SEP 2020 to 08 OCT 2020



CAUTION: BE ALERT TO RUNWAY CROSSING CLEARANCES.
READBACK OF ALL RUNWAY HOLDING INSTRUCTIONS IS REQUIRED.

D-ATIS ARR 127.85
DEP 132.375
CLEVELAND TOWER
124.5 273.45
CND CON
121.7 273.45
CNC DEL
125.05 273.45
CPDLC
D

VAR 8.2° W
JANUARY 2020
ANNUAL RATE OF CHANGE
0.0° W

RWY 06L-24R
PCN 78 R/B/W/T
S-75, D-200, 2D-400
RWY 06R-24L
PCN 63 R/B/W/T
S-100, D-185, 2D-340
RWY 10-28
PCN 80 R/B/W/T
S-155, D-200, 2D-400

ASSC in use. Operate transponders
with altitude reporting mode and
ADS-B (if equipped) enabled on
all airport surfaces.

AIRPORT DIAGRAM

CLEVELAND, OHIO
CLEVELAND-HOPKINS INTL (CLE)

EC-2, 10 SEP 2020 to 08 OCT 2020