

WYLYY THREE DEPARTURE (RNAV)

AL-58 (FAA)

BOSTON, MASSACHUSETTS

NE-1, 10 SEP 2020 to 08 OCT 2020

DEPARTURE ROUTE DESCRIPTION

TAKEOFF RWY 27: Climb heading 272° to intercept course 234° to cross WYLYY at or above 2300, then on depicted route to CYOTI, thence. . . .

. . . .expect vectors to assigned fix/**NAVAID** (see notes). Maintain 5000 or lower assigned altitude. Expect clearance to filed altitude/flight level within ten (10) minutes after departure.

TOP ALTITUDE:
5000

NOTE: Departures assigned routing via LBSTA, PSM VOR/DME, MHT VOR/DME, HYLND, or REVSS direct SPENO, BLZZR direct ONEPS, PATSS, GLYDE or BOSOX, expect radar vectors to the right to assigned route/fix.

NOTE: Departure hdg/RNAV tracks/vectors are predicated on avoiding noise sensitive areas. Flight crew awareness and compliance is important in minimizing noise impacts on surrounding communities.

NOTE: ATC assigned. Do not file.

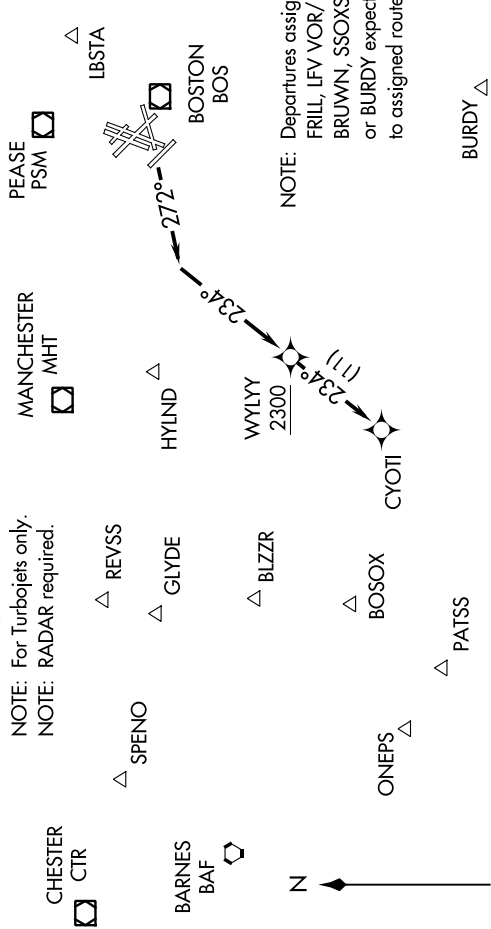
NOTE: DME/DME/IRU or GPS required.

NOTE: RNAV 1

NOTE: For Turbojets only.

NOTE: RADAR required.

D-AITS 133.0
 CLNC DEL 121.65 257.8
 CPDLC
 GND CON 121.9 121.75
 BOSTON TOWER 128.8 257.8 (WEST)
 BOSTON DEP CON 132.225 257.8 (EAST)
 133.0



NOTE: Departures assigned routing via CELTIK, FRILL, LFV VOR/DME, ACK VOR/DME, BRUWN, SSOXS, LUCOS, SEY VOR/DME, or BURDY expect radar vectors to the left to assigned route/fix.

TAKEOFF MINIMUMS:
 Rwy 4L, 4R, 9, 14, 15L, 15R, 22L, 22R, 32, 33L, 33R: NA-ATC.
 Rwy 27: Standard with a minimum climb of 474' per NM to 2300.

NOTE: Chart not to scale.

WYLYY THREE DEPARTURE (RNAV)

NE-1, 10 SEP 2020 to 08 OCT 2020