

BLZZR FOUR DEPARTURE (RNAV)

AL-58 (FAA)

BOSTON, MASSACHUSETTS

NE-1, 10 SEP 2020 to 08 OCT 2020

TOP ALTITUDE:
5000

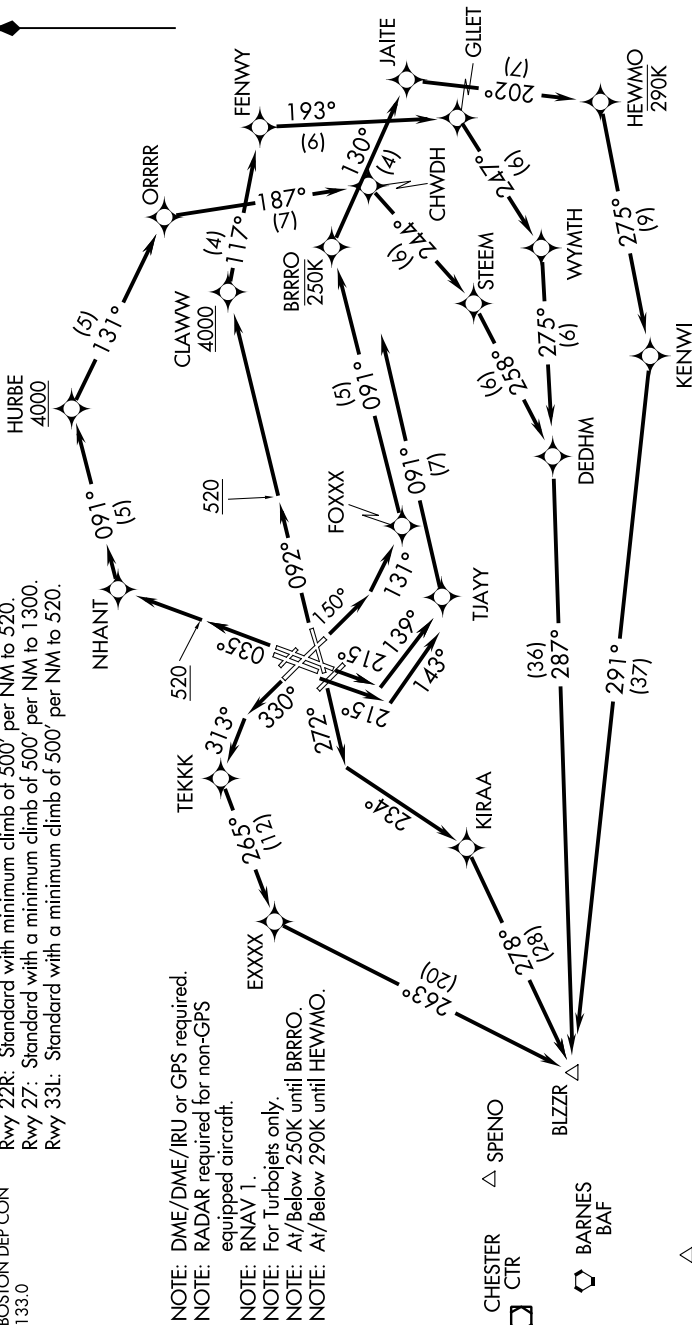
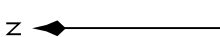
NOTE: Departure hdg/RNAV tracks/vectors are predicated on avoiding noise sensitive areas. Flight crew awareness and compliance is important in minimizing noise impacts on surrounding communities.
Rwy 15R, 22L, 22R: Do not exceed 210K until 520' MSL.

TAKEOFF MINIMUMS:
Rwys 4L, 14, 15L, 32, 33R: NA-ATC.
Rwy 4R: Standard with minimum climb of 500' per NM to 3600.
Rwy 9: Standard with minimum climb of 500' per NM to 4000.
Rwy 15R: Standard with minimum climb of 500' per NM to 520'.
Rwy 22L: 300-1 with minimum climb of 500' per NM to 520, or standard with minimum climb of 500' per NM to 520 if tower reports no tall vessels in the departure area.
Rwy 22R: Standard with minimum climb of 500' per NM to 520.
Rwy 27: Standard with a minimum climb of 500' per NM to 1300.
Rwy 33L: Standard with a minimum climb of 500' per NM to 520.

D-ATIS 135.0
CLNC DEL 121.65 257.8
CPDLC
GND CON 121.9 121.75
BOSTON TOWER 128.8 257.8 (WEST)
132.225 257.8 (EAST)
BOSTON DEP CON 133.0

NOTE: DME/DME/IRU or GPS required.
NOTE: RADAR required for non-GPS equipped aircraft.
NOTE: RNAV 1.
NOTE: For Turbojets only.
NOTE: At/Below 250K until BRRO.
NOTE: At/Below 290K until HEWMO.

☐ CHESTER CTR
△ SPENO
△ BARNES BAF
△ NELLE



NOTE: Chart not to scale.

(NARRATIVE ON FOLLOWING PAGE)

NE-1, 10 SEP 2020 to 08 OCT 2020

BLZZR FOUR DEPARTURE (RNAV)