


VORTAC CEC <b>109.0</b> Chan 27	APP CRS <b>131°</b>	Rwy Idg TDZE Apt Elev	<b>5002</b> <b>60</b> <b>61</b>
---------------------------------------	------------------------	-----------------------------	---------------------------------------

**VOR RWY 12**  
JACK MC NAMARA FIELD (CEC)

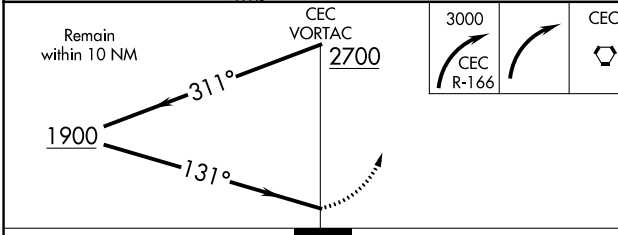
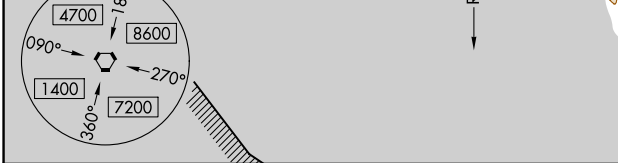
**⚠** When local altimeter setting not received, use Brookings altimeter setting and increase all MDA 100 feet; increase S-12 Cat C/D visibility  $\frac{3}{8}$  mile, Circling Cat D visibility  $\frac{1}{4}$  mile and Circling Cat C visibility  $\frac{1}{2}$  mile. For inop MALSRL increase S-12 Cat A/B visibility to 1 mile, and Cat C/D visibility to  $1\frac{1}{2}$  mile. For inop MALSRL when using Brookings altimeter setting, increase S-12 Cat A/B visibility to 1 mile, and Cat C/D visibility to  $1\frac{1}{2}$  mile. Night Landing: Rwy 36 operational VGSI required, remain on or above VGSI glidepath until threshold. Night Landing: Rwy 18, 30 NA.

MALSRL

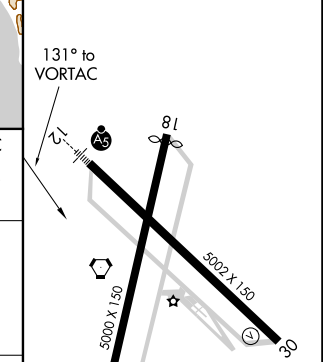


MISSED APPROACH: Climbing right turn to 3000 on CEC VORTAC R-166 then right turn direct CEC VORTAC and hold.

ASOS <b>119.925</b>	SEATTLE CENTER <b>124.85 306.3</b>	UNICOM <b>122.8 (CTAF)</b> <b>0</b>
------------------------	---------------------------------------	--



ELEV 61	TDZE 60
---------	---------



CATEGORY	A	B	C	D
S-12	520- $\frac{3}{4}$	460 (500- $\frac{3}{4}$ )	520-1	460 (500-1)
<b>C</b> CIRCLING	540-1	479 (500-1)	640-1 $\frac{1}{2}$ 579 (600-1 $\frac{1}{2}$ )	640-2 579 (600-2)

HIRL Rwy 12-30 **0**  
MIRL Rwy 18-36 **0**  
REIL Rws 18, 30 and 36 **0**

SW-2, 10 SEP 2020 to 08 OCT 2020

SW-2, 10 SEP 2020 to 08 OCT 2020