

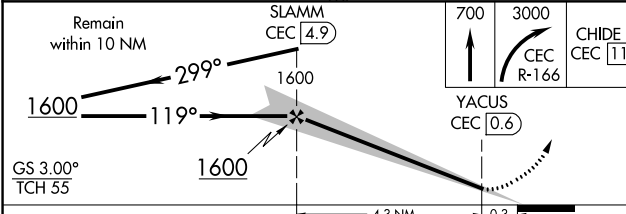
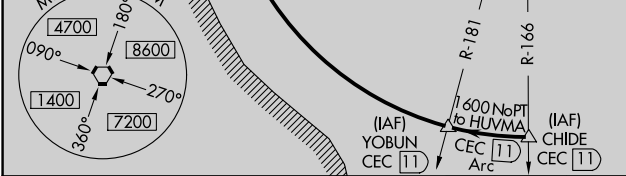
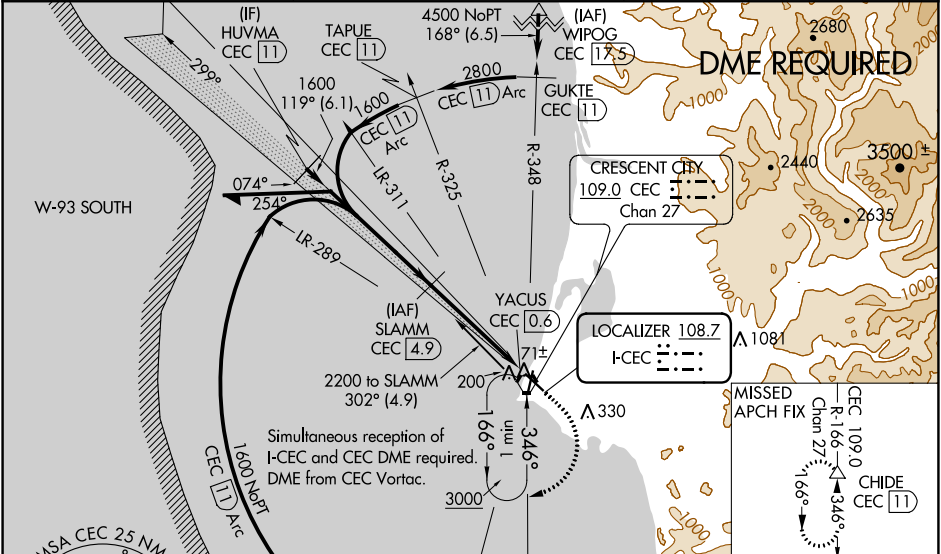
|                           |                        |                             |                                       |
|---------------------------|------------------------|-----------------------------|---------------------------------------|
| LOC I-CEC<br><b>108.7</b> | APP CRS<br><b>119°</b> | Rwy Idg<br>TDZE<br>Apt Elev | <b>5002</b><br><b>60</b><br><b>61</b> |
|---------------------------|------------------------|-----------------------------|---------------------------------------|

**ILS or LOC RWY 12**  
JACK MC NAMARA FIELD (CEC)

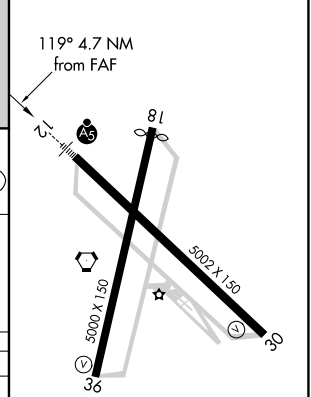
**NA** DME required. S-ILS 12: ½ mile visibility authorized with use of FD or AP or HUD to DA. Inop table does not apply to S-ILS 12, except with use of FD or AP or HUD to DA. For inop MALS, increase S-LOC 12 all Cats visibility ¼ mile. When local altimeter setting not received, use Brookings altimeter setting and increase DA to 407 feet and all MDA 100 feet; increase S-LOC 12 Cat C/D, and Circling Cat D visibilities ¼ mile. For inop MALS, when using Brookings altimeter setting, increase S-ILS 12 all Cats visibility to 1 mile. Night Landing: Rwy 36 operational VGSi required, remain on or above VGSi glidepath until threshold. Circling to Rwy 18, 30 NA at night.

**MALS**  
MISSED APPROACH:  
Climb to 700 then climbing right turn to 3000 on CEC VORTAC R-166 to CHIDE/CEC 11 DME and hold, continue climb-in-hold to 3000.

|                        |                                       |                               |
|------------------------|---------------------------------------|-------------------------------|
| ASOS<br><b>119.925</b> | SEATTLE CENTER<br><b>124.85 306.3</b> | UNICOM<br><b>122.8 (CTAF)</b> |
|------------------------|---------------------------------------|-------------------------------|



|         |         |
|---------|---------|
| ELEV 61 | TDZE 60 |
|---------|---------|



| CATEGORY          | A     | B           | C                      | D                    |
|-------------------|-------|-------------|------------------------|----------------------|
| S-ILS 12          |       | 310-¾       | 250 (300-¾)            |                      |
| S-LOC 12          |       | 380-¾       | 320 (400-¾)            |                      |
| <b>C</b> CIRCLING | 540-1 | 479 (500-1) | 640-1½<br>579 (600-1½) | 640-2<br>579 (600-2) |

HIRL Rwy 12-30  
REIL Rws 18, 30 and 36  
MIRL Rwy 18-36

SW-2, 10 SEP 2020 to 08 OCT 2020

SW-2, 10 SEP 2020 to 08 OCT 2020