

**TOP ALTITUDE:
10000**

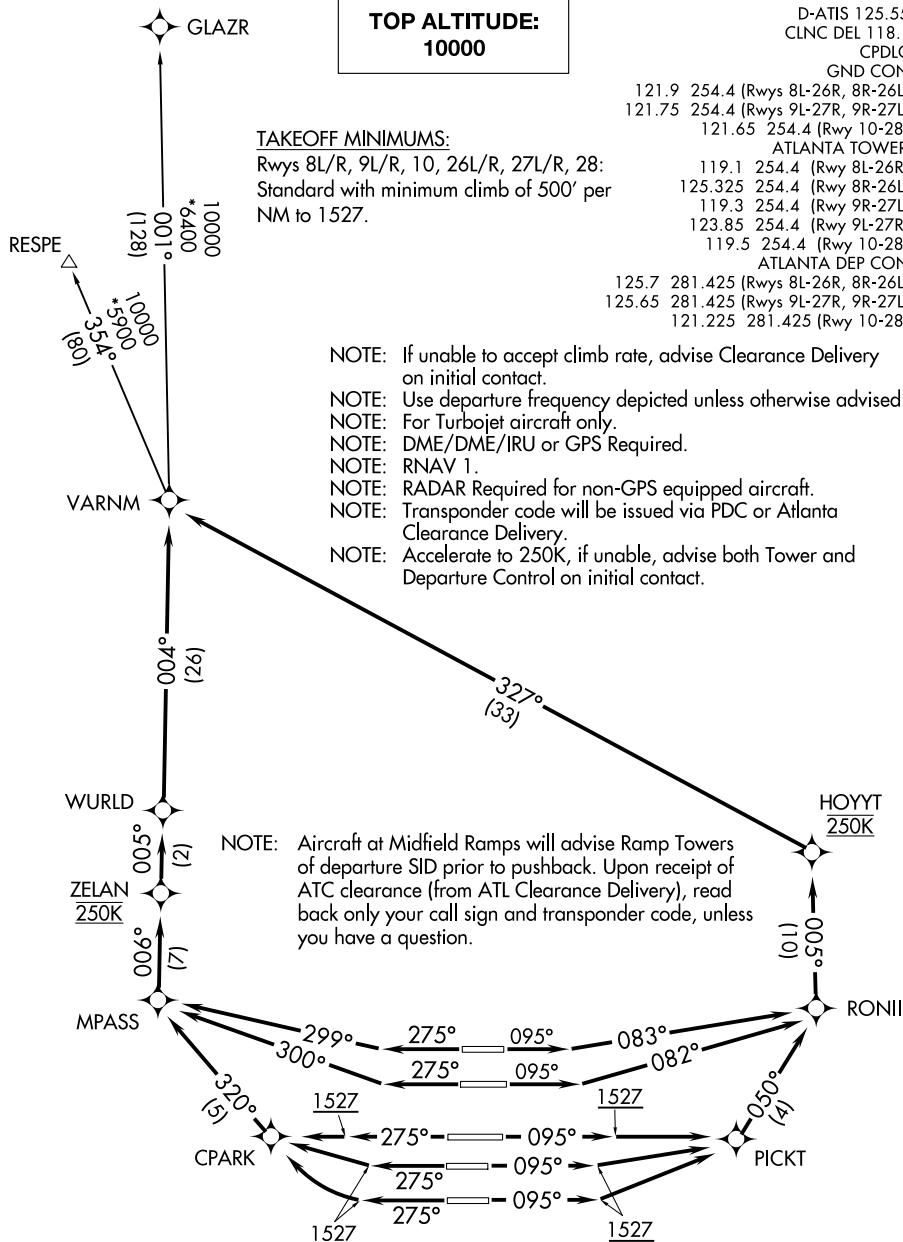
D-ATIS 125.55
CLNC DEL 118.1
CPDLC
GND CON

121.9	254.4	(Rwys 8L-26R, 8R-26L)
121.75	254.4	(Rwys 9L-27R, 9R-27L)
121.65	254.4	(Rwy 10-28)
ATLANTA TOWER		
119.1	254.4	(Rwy 8L-26R)
125.325	254.4	(Rwy 8R-26L)
119.3	254.4	(Rwy 9R-27L)
123.85	254.4	(Rwy 9L-27R)
119.5	254.4	(Rwy 10-28)
ATLANTA DEP CON		
125.7	281.425	(Rwys 8L-26R, 8R-26L)
125.65	281.425	(Rwys 9L-27R, 9R-27L)
121.225	281.425	(Rwy 10-28)

TAKEOFF MINIMUMS:
Rwys 8L/R, 9L/R, 10, 26L/R, 27L/R, 28:
Standard with minimum climb of 500' per
NM to 1527.

- NOTE: If unable to accept climb rate, advise Clearance Delivery on initial contact.
- NOTE: Use departure frequency depicted unless otherwise advised.
- NOTE: For Turbojet aircraft only.
- NOTE: DME/DME/IRU or GPS Required.
- NOTE: RNAV 1.
- NOTE: RADAR Required for non-GPS equipped aircraft.
- NOTE: Transponder code will be issued via PDC or Atlanta Clearance Delivery.
- NOTE: Accelerate to 250K, if unable, advise both Tower and Departure Control on initial contact.

NOTE: Aircraft at Midfield Ramps will advise Ramp Towers of departure SID prior to pushback. Upon receipt of ATC clearance (from ATL Clearance Delivery), read back only your call sign and transponder code, unless you have a question.



NOTE: Chart not to scale.

(NARRATIVE ON FOLLOWING PAGE)

SE-4, 10 SEP 2020 to 08 OCT 2020

SE-4, 10 SEP 2020 to 08 OCT 2020