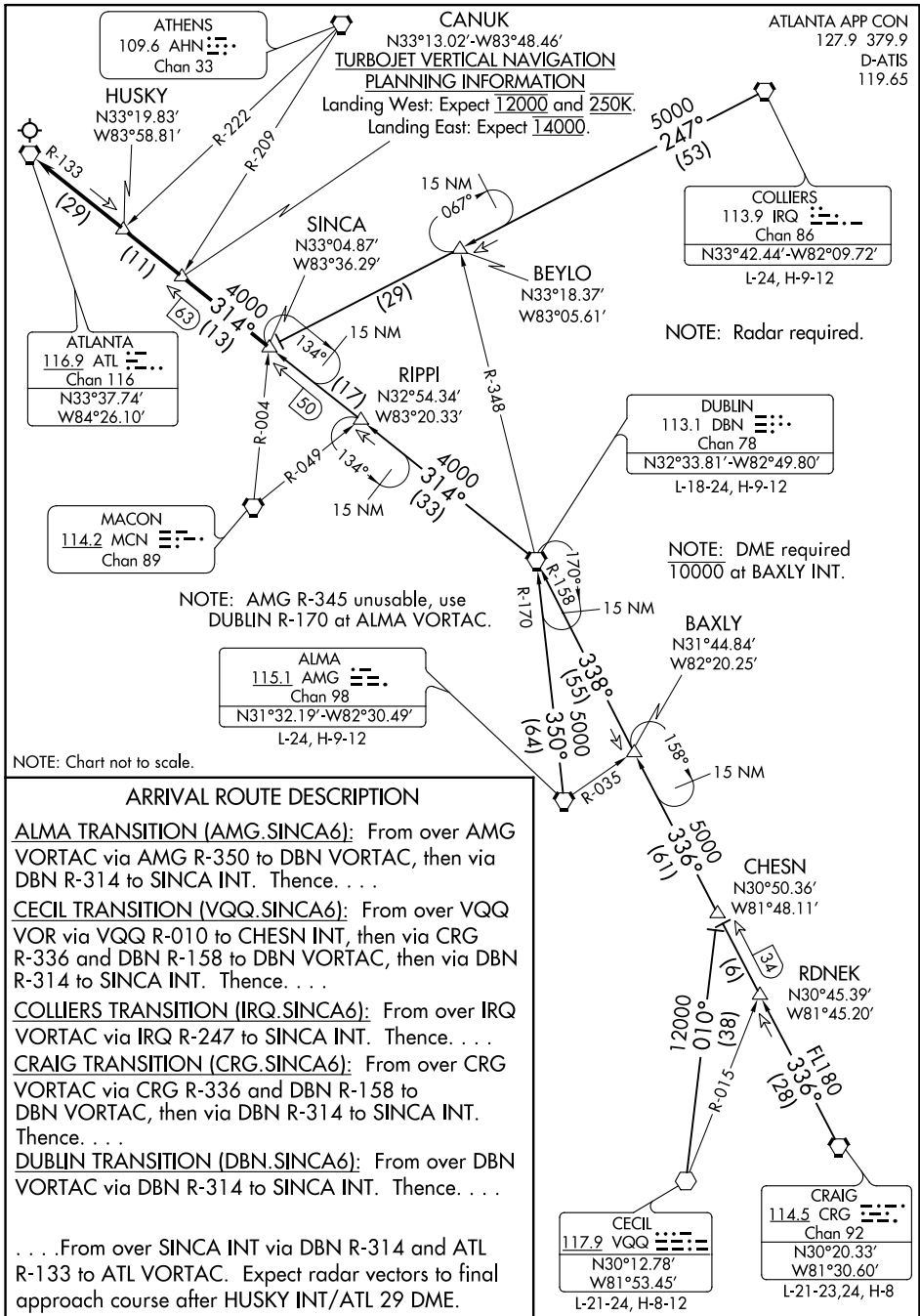


(SINCA.SINCA6) 20086
SINCA SIX ARRIVAL

HARTSFIELD-JACKSON ATLANTA INTL (ATL)
 AL-26 (FAA) ATLANTA, GEORGIA



ARRIVAL ROUTE DESCRIPTION

ALMA TRANSITION (AMG.SINCA6): From over AMG VORTAC via AMG R-350 to DBN VORTAC, then via DBN R-314 to SINCA INT. Thence. . .

CECIL TRANSITION (VQQ.SINCA6): From over VQQ VOR via VQQ R-010 to CHESN INT, then via CRG R-336 and DBN R-158 to DBN VORTAC, then via DBN R-314 to SINCA INT. Thence. . .

COLLIERS TRANSITION (IRQ.SINCA6): From over IRQ VORTAC via IRQ R-247 to SINCA INT. Thence. . .

CRAIG TRANSITION (CRG.SINCA6): From over CRG VORTAC via CRG R-336 and DBN R-158 to DBN VORTAC, then via DBN R-314 to SINCA INT. Thence. . .

DUBLIN TRANSITION (DBN.SINCA6): From over DBN VORTAC via DBN R-314 to SINCA INT. Thence. . .

. . . From over SINCA INT via DBN R-314 and ATL R-133 to ATL VORTAC. Expect radar vectors to final approach course after HUSKY INT/ATL 29 DME.

SINCA SIX ARRIVAL
 (SINCA.SINCA6) 15NOV12

ATLANTA, GEORGIA
 HARTSFIELD-JACKSON ATLANTA INTL (ATL)

SE-4, 10 SEP 2020 to 08 OCT 2020

SE-4, 10 SEP 2020 to 08 OCT 2020