

WAAS CH <b>40399</b> <b>W10A</b>	APP CRS <b>095°</b>	Rwy Idg TDZE <b>1000</b> Apt Elev <b>1026</b>
--	------------------------	---

# RNAV (GPS) Y RWY 10

HARTSFIELD-JACKSON ATLANTA INTL (ATL)

▼ For uncompensated Baro-VNAV systems, LNAV/VNAV NA below -7°C (20°F) or above 54°C (130°F). DME/DME-0.3 RNP NA. For inop ALSF-2, increase LNAV/VNAV all Cats visibility to 1½ mile and LNAV Cats C and D visibility to 1¾ mile. LNAV procedure NA during simultaneous operations. Simultaneous approach authorized with Rwy 8L or 8R or 9L, or Rwy 8L and 9L. Use of FD or AP providing RNAV track guidance required during simultaneous operations.

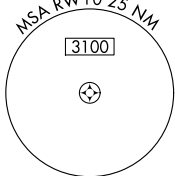
ALSF-2



MISSED APPROACH: Climb to 1500 then climbing right turn to 3000 direct SCARR and hold.

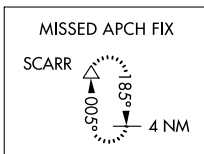
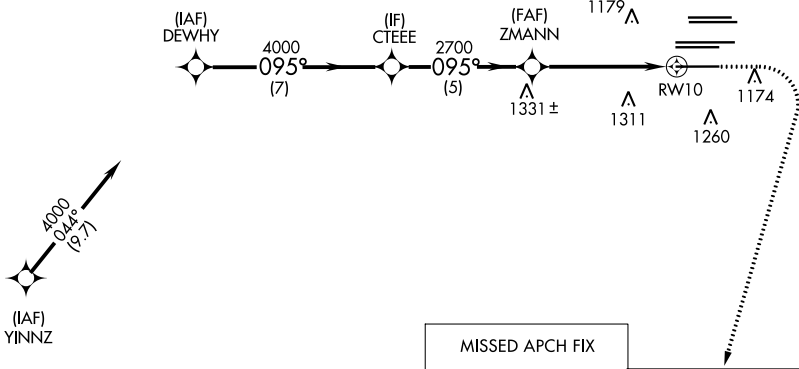
D-ATIS ARR <b>119.65</b> DEP <b>125.55</b>	ATLANTA APP CON <b>127.9 379.9</b>	ATLANTA TOWER 8L-26R 8R-26L 9L-27R 9R-27L 10-28 RWYS <b>119.1 125.325 123.85 119.3 119.5 254.4</b>				ALL RWYS <b>121.9</b>	GND CON 9L-27R, 9R-27L 10-28 RWYS <b>121.75 121.65 254.4</b>	ALL RWYS <b>121.9</b>
--	--	--	--	--	--	-----------------------------	--	-----------------------------

## RADAR REQUIRED

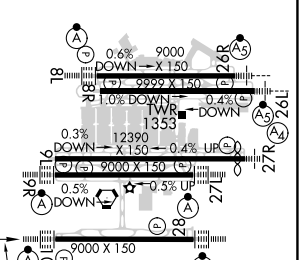
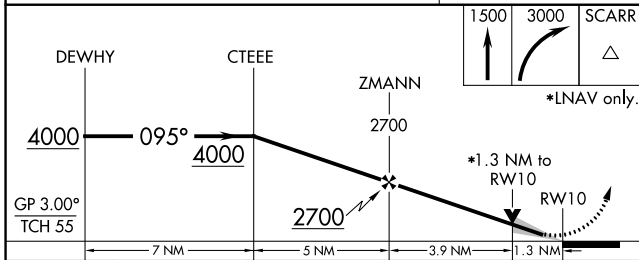


2048 <sup>Λ</sup>

CLNC DEL	CPDLC
<b>118.1</b>	



ELEV 1026  TDZE 1000



CATEGORY	A	B	C	D
LPV DA		1200/18	200 (200-½)	
LNAV/VNAV DA		1455/55	455 (500-1)	
LNAV MDA	1480/24	480 (500-½)	1480/50	480 (500-1)

095° to RWY 10  
 HIRL all Rwy's  
 TDZ/CL Rwy's 8L, 9R, 10, 26R, 27L and 28

SE-4, 10 SEP 2020 to 08 OCT 2020

SE-4, 10 SEP 2020 to 08 OCT 2020