

RNAV (GPS) PRM Y RWY 26R (SIMULTANEOUS CLOSE PARALLEL)

HARTSFIELD-JACKSON ATLANTA INTL (ATL)

WAAS CH 61000 W26B	APP CRS 275°	Rwy Idg TDZE 990 Apt Elev 1026	8500
--	------------------------	--	-------------

▼ For uncompensated Baro-VNAV systems, LNAV/VNAV NA below -7°C (20°F) or above 54°C (130°F). DME/DME RNP-0.3 NA. Simultaneous close parallel approach authorized with ILS PRM and RNAV PRM RWY 27R or 27L or 28, or Rwys 27R and 28, or Rwys 27L and 28. Use of FD or AP providing RNAV track guidance required during simultaneous operations. Dual VHF comm required. See additional requirements on AAUP.

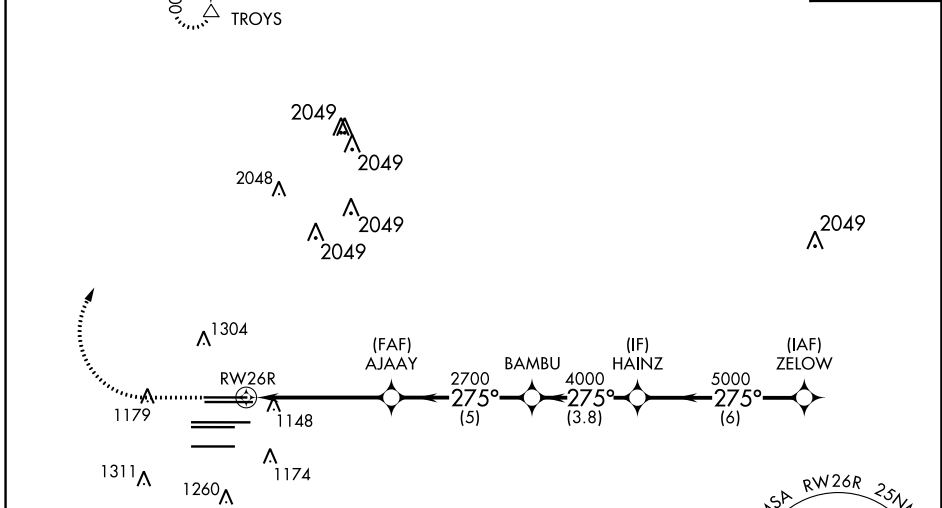
MALSR



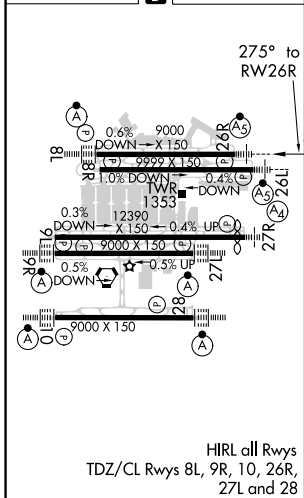
MISSED APPROACH: Climb to 1500 then climbing right turn to 3500 direct TROYS and hold.

D-ATIS ARR 119.65 DEP 125.55	ATLANTA APP CON 127.9 379.9	ATLANTA TOWER 8L-26R 8R-26L 9L-27R 9R-27L 10-28 RWYS 119.1 125.325 123.85 119.3 119.5 254.4 PRM 126.9				ALL RWYS 121.9	GND CON (8L-26R,8R-26L) (9L-27R,9R-27L) 10-28 121.75 121.65 254.4	ALL RWYS 121.65 254.4
--	--	--	--	--	--	-----------------------------	--	------------------------------------

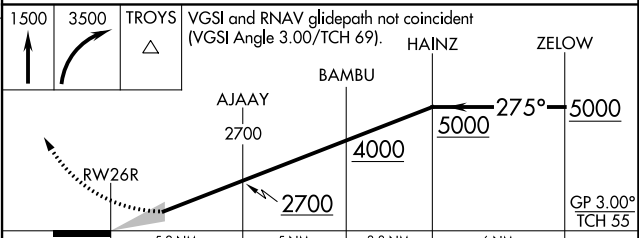
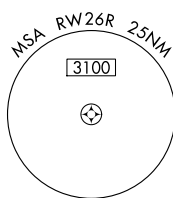
CLNC DEL 118.1	CPDLC
-----------------------------	-------



ELEV 1026	D	TDZE 990
-----------	----------	----------



RADAR REQUIRED



CATEGORY	A	B	C	D
LPV DA		1190/18	200 (200-½)	
LNAV/VNAV DA		1426/50	436 (500-1)	

SE-4, 10 SEP 2020 to 08 OCT 2020

SE-4, 10 SEP 2020 to 08 OCT 2020