

ATLANTA, GEORGIA

AL-26 (FAA)

RNAV (GPS) PRM RWY 9L (SIMULTANEOUS CLOSE PARALLEL) HARTSFIELD-JACKSON ATLANTA INTL (ATL)

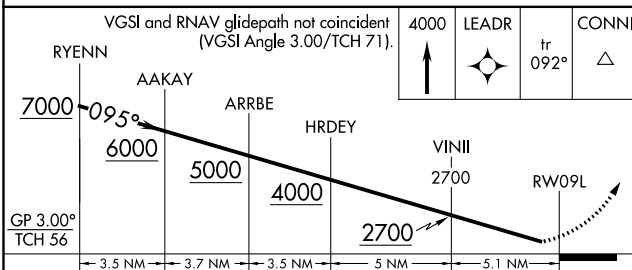
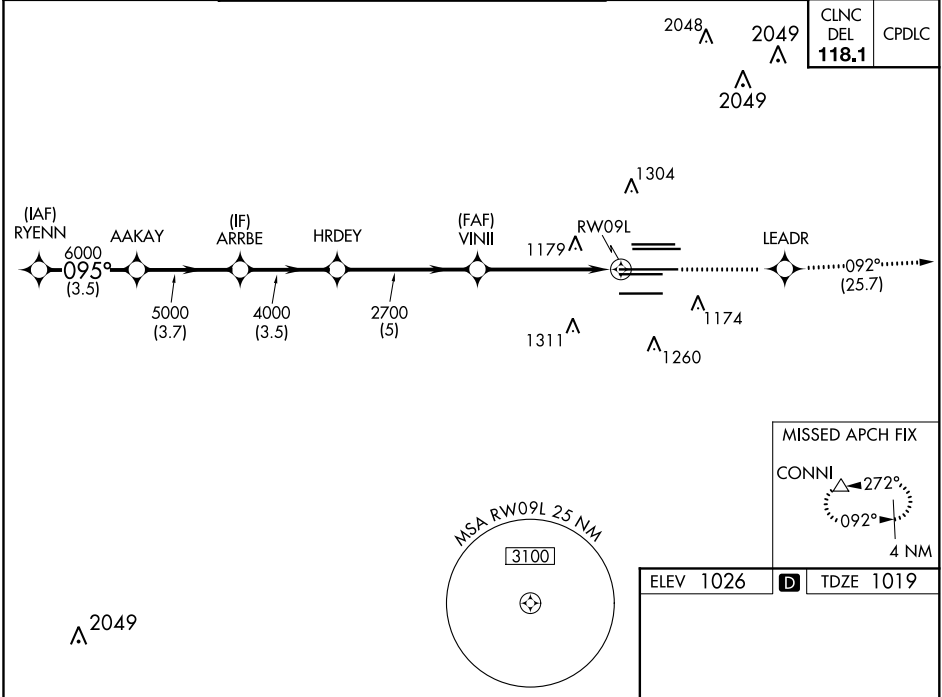
WAAS CH 62800 W09D	APP CRS 095°	Rwy Idg 11730 TDZE 1019 Apt Elev 1026
--	------------------------	--

RNP APCH.

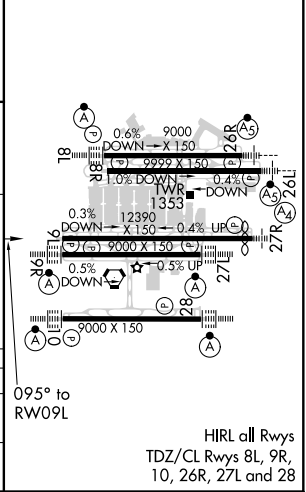
▼ For uncompensated Baro-VNAV systems, LNAV/VNAV NA below -7°C or above 54°C.
Simultaneous approach authorized. Use of FD or AP required during simultaneous operations.
Dual VHF Comm required. See additional requirements on AAUP.

MISSED APPROACH: Climb to 4000 direct LEADR and on track 092° to CONNI and hold.

D-ATIS ARR 119.65 DEP 125.55	ATLANTA APP CON 127.9 379.9	ATLANTA TOWER 8L-26R 8R-26L 9L-27R 9R-27L 10-28 RWYS 119.1 125.325 123.85 119.3 119.5 254.4 PRM 132.55	ALL RWYS (8L-26R,8R-26L) (9L-27R,9R-27L) 10-28 121.9 121.75 121.65 254.4	GND CON 121.75 121.65 254.4	ALL RWYS
--	--	---	--	---------------------------------------	-------------



ELEV 1026	TDZE 1019
-----------	-----------



CATEGORY	A	B	C	D
LPV DA	1359/50		340 (400-1)	
LNAV/VNAV DA	1405/60		386 (400-1¼)	

ATLANTA, GEORGIA
Orig-E 26MAR20

33°38'N-84°26'W

HARTSFIELD-JACKSON ATLANTA INTL (ATL)

RNAV (GPS) PRM RWY 9L (SIMULTANEOUS CLOSE PARALLEL)

SE-4, 10 SEP 2020 to 08 OCT 2020

SE-4, 10 SEP 2020 to 08 OCT 2020