

# RNAV (GPS) PRM RWY 26L (SIMULTANEOUS CLOSE PARALLEL)

HARTSFIELD-JACKSON ATLANTA INTL (ATL)

WAAS CH <b>56300</b> <b>W26A</b>	APP CRS <b>275°</b>	Rwy Idg <b>9999</b> TDZE <b>996</b> Apt Elev <b>1026</b>
--	------------------------	--

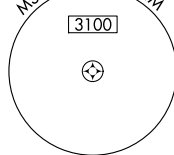
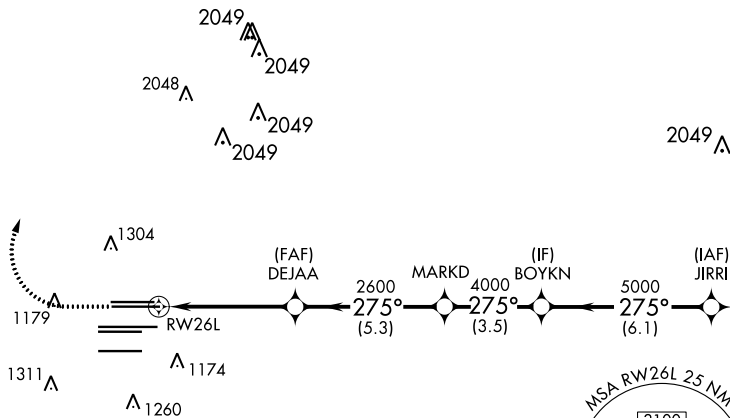
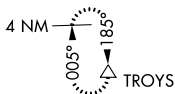
▼ For uncompensated Baro-VNAV systems, LNAV/VNAV NA below -7°C (20°F) or above 54°C (130°F). DME/DME RNP-0.3 NA. For inop MALSR, increase LPV all Cats visibility to RVR 4500 and LNAV/VNAV all Cats visibility to RVR 6000. Simultaneous close parallel approach authorized with ILS PRM and RNAV PRM Rwy 27R or 27L or 28, or Rwys 27R and 28, or Rwys 27L and 28. Dual VHF Comm required. Use of FD or AP providing RNAV track guidance required during simultaneous operations. See additional requirements on AAUP.



MISSED APPROACH:  
Climb to 1500 then climbing right turn to 3500 direct TROYS and hold.

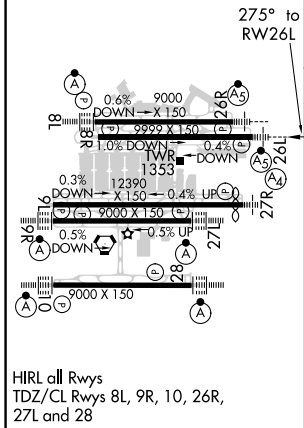
D-ATIS ARR <b>119.65</b> DEP <b>125.55</b>	ATLANTA APP CON <b>127.9 379.9</b>	ATLANTA TOWER ALL RWYS 8L-26R 8R-26L 9L-27R 9R-27L 10-28 <b>119.1 125.325 123.85 119.3 119.5 254.4</b> PRM <b>126.9</b>	GND CON ALL RWYS (8L-26R, 8R-26L) (9L-27R, 9R-27L) 10-28 <b>121.9 121.75 121.65 254.4</b>
--	---------------------------------------	--	---

CLNC DEL	CPDLC
<b>118.1</b>	



ELEV 1026	<b>D</b>	TDZE 996
-----------	----------	----------

## RADAR REQUIRED



1500	3500	TROYS	VGSi and RNAV glidepath not coincident (VGSi Angle 3.00/TCH 63).	
↑	↷	△	MARKD	BOYKN
RWY26L		DEJAA	MARKD	JIRRI
	2600	4000	5000	5000
	2600	4000	5000	5000
	4.9 NM	5.3 NM	3.5 NM	6.1 NM
CATEGORY	A	B	C	D
LPV DA		1281/24	285 (300-½)	
LNAV/VNAV DA		1360/35	364 (400-¾)	
			GP 3.00°	TCH 52