

ATLANTA, GEORGIA

AL-26 (FAA)

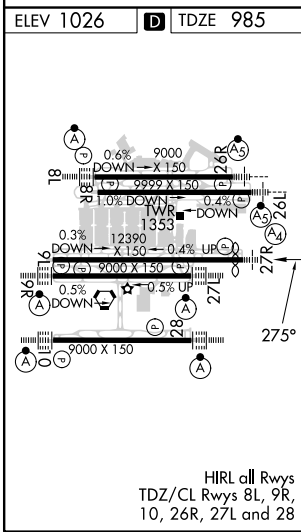
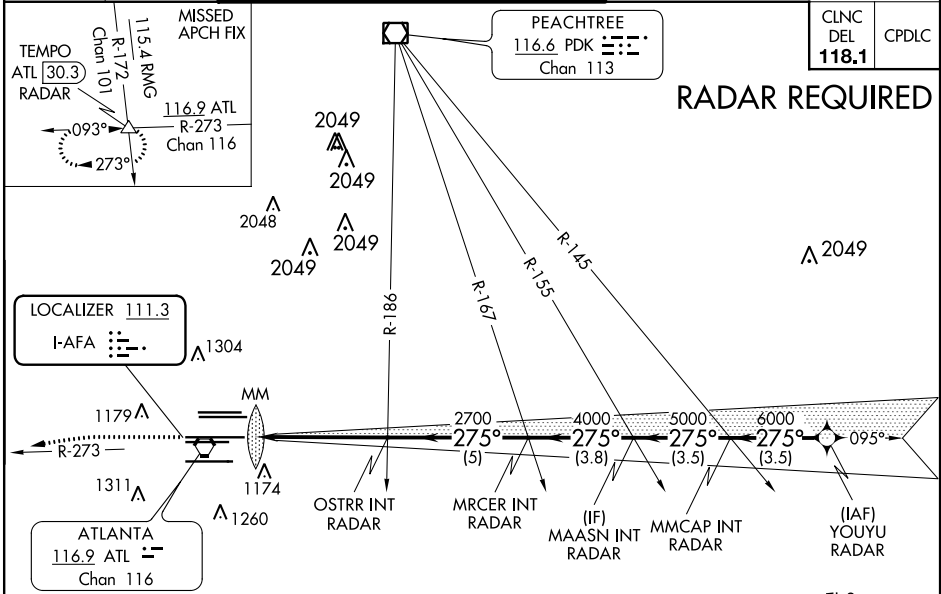
# ILS PRM RWY 27R (SIMULTANEOUS CLOSE PARALLEL) HARTSFIELD-JACKSON ATLANTA INTL (ATL)

LOC I-AFA <b>111.3</b>	APP CRS <b>275°</b>	Rwy Idg TDZE Apt Elev	<b>11690</b> <b>985</b> <b>1026</b>
---------------------------	------------------------	-----------------------------	---

Simultaneous close parallel approach authorized with ILS PRM and RNAV PRM Rwy 26R or 26L or 28, or Rwys 26R and 28, or Rwys 26L and 28. Procedure not authorized when glideslope not available. Dual VHF comm required. See additional requirements on AAUP.

MALS MISSED APPROACH: Climb to 1400 then climbing left turn to 4000 on ATL VORTAC R-273 to TEMPO INT/ATL 30.3 DME/RADAR and hold.

D-ATIS ARR <b>119.65</b> DEP <b>125.55</b>	ATLANTA APP CON <b>127.9 379.9</b>	ATLANTA TOWER 8L-26R 8R-26L 9L-27R 9R-27L 10-28 RWYS <b>119.1 125.325 123.85 119.3 119.5 254.4</b> PRM <b>132.55</b>	ALL RWYS (8L-26R, 8R-26L) (9L-27R, 9R-27L) 10-28 <b>121.9 121.75 121.65 254.4</b>
--	---------------------------------------	---	---



ELEV 1026	D TDZE 985	ALTERNATE MISSED APCH FIX TEMPO LGC [34.7] RADAR 115.6 LCC R-013 Chan 103	MSA ATL 25 NM 3100
1400	4000	TEMPO	YOUYU RADAR
↑	ATL R-273	△	Procedure Turn NA
VGSi and ILS glidepath not coincident (VGSi Angle 3.00/TCH 72).			7000
OSTRR INT RADAR MRCER INT RADAR MMCAP INT MAASN INT RADAR			GS 3.00° TCH 56
CATEGORY	A	B	C
S-ILS 27R	1185/40 200 (200-¾)		

ATLANTA, GEORGIA  
Amdt 2 18SEP14

33°38'N-84°26'W

HARTSFIELD-JACKSON ATLANTA INTL (ATL)

## ILS PRM RWY 27R (SIMULTANEOUS CLOSE PARALLEL)

SE-4, 10 SEP 2020 to 08 OCT 2020

SE-4, 10 SEP 2020 to 08 OCT 2020