

LOC/DME I-HFW <b>109.3</b> Chan <b>30</b>	APP CRS <b>095°</b>	Rwy Idg TDZE Apt Elev	<b>8800</b> <b>1015</b> <b>1026</b>
---	------------------------	-----------------------------	---

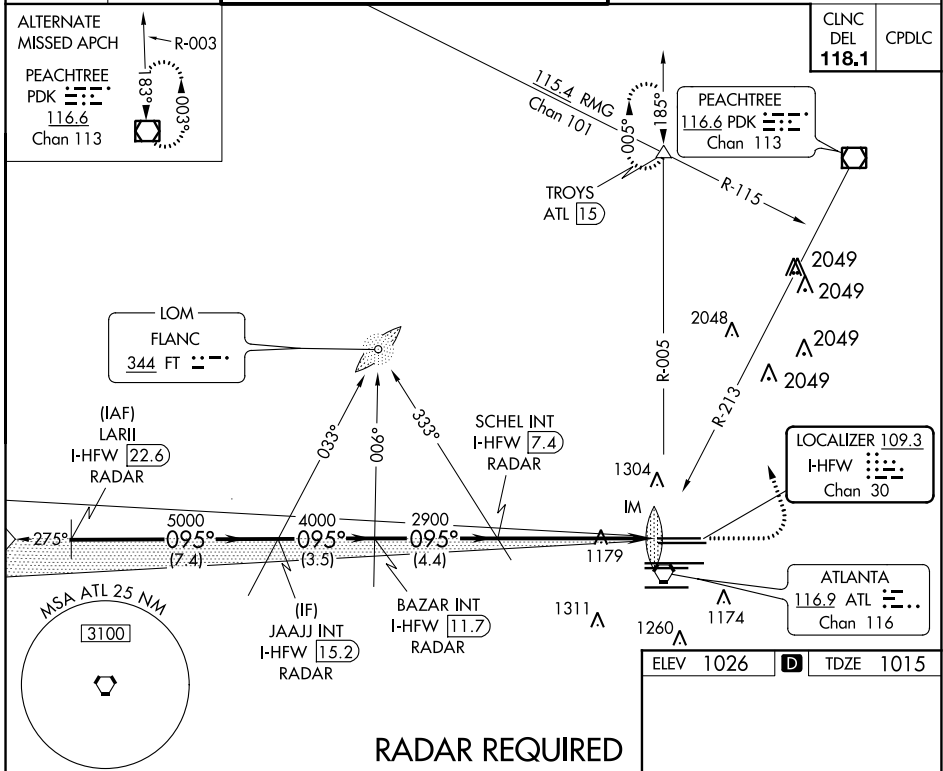
# ILS RWY 8L (SA CAT I)

## HARTSFIELD-JACKSON ATLANTA INTL (ATL)

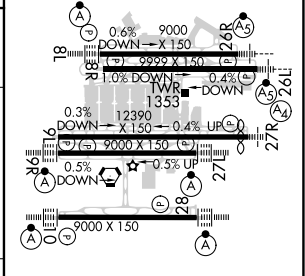
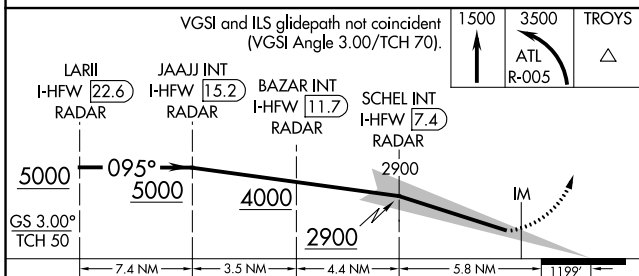
Simultaneous approach authorized with Rwy 9L or 9R or 10, or Rwys 9L and 10. ADF or DME or RADAR required. Requires specific OPSPEC, MSPEC, or LOA approval and use of HUD to DH.

ALSF-2 MISSED APPROACH: Climb to 1500 then climbing left turn to 3500 on ATL VORTAC R-005 to TROYS INT/ATL 15 DME and hold.

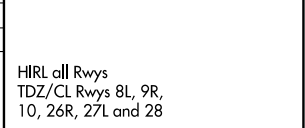
D-ATIS ARR <b>119.65</b>	ATLANTA APP CON DEP <b>127.9 379.9</b>	ATLANTA TOWER 8L-26R 8R-26L 9L-27R 9R-27L 10-28 RWYS <b>119.1 125.325 123.85 119.3 119.5 254.4</b>	ALL RWYS <b>121.9 121.75 121.65 254.4</b>	GND CON 8L-26R,8R-26L 9L-27R,9R-27L 10-28 <b>121.9 121.75 121.65 254.4</b>	ALL RWYS
-----------------------------	--	--	---	--	-------------



### RADAR REQUIRED



CATEGORY	A	B	C	D
S-ILS 8L	RA 147/14 150 DA 1165			
<b>SA CATEGORY I ILS - SPECIAL AIRCREW &amp; AIRCRAFT CERTIFICATION REQUIRED</b>				



SE-4, 10 SEP 2020 to 08 OCT 2020

SE-4, 10 SEP 2020 to 08 OCT 2020