

LOC/DME I-HFW <b>109.3</b> Chan <b>30</b>	APP CRS <b>095°</b>	Rwy Idg <b>8800</b> TDZE <b>1015</b> Apt Elev <b>1026</b>
---	------------------------	---

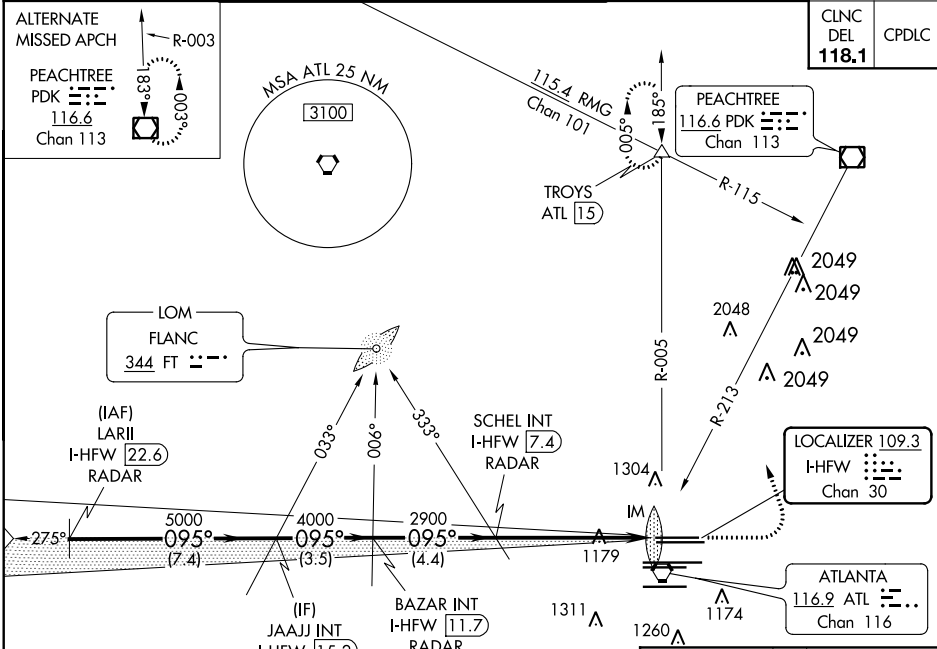
# ILS RWY 8L (CAT II & III)

## HARTSFIELD-JACKSON ATLANTA INTL (ATL)

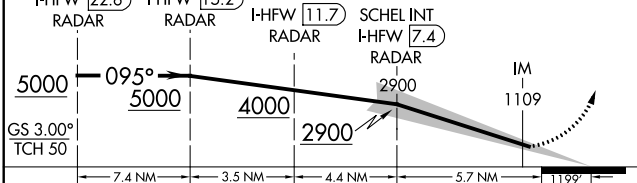
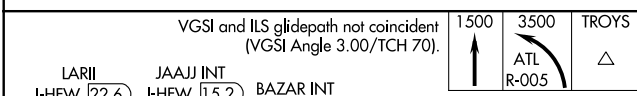
Simultaneous approach authorized with Rwy 9L or 9R or 10, or Rwy 9L and 10.  
ADF or DME or RADAR required.

MISSED APPROACH: Climb to 1500 then climbing left turn to 3500 on ATL VORTAC R-005 to TROYS INT/ATL 1.5 DME and hold.

D-ATIS ARR <b>119.65</b>	ATLANTA APP CON DEP <b>127.9 379.9</b>	ATLANTA TOWER 8L-26R 8R-26L 9L-27R 9R-27L 10-28 RWYS				ALL RWYS <b>254.4</b>	GND CON (8L-26R,8R-26L) (9L-27R,9R-27L) 10-28	ALL RWYS <b>254.4</b>
-----------------------------	--	---	--	--	--	-----------------------------	--	-----------------------------



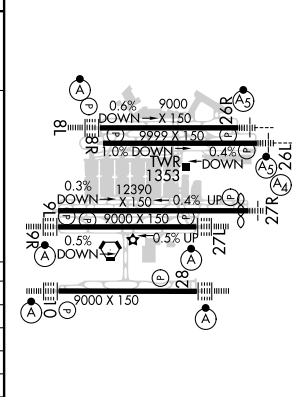
### RADAR REQUIRED



CATEGORY	A	B	C	D
S-ILS 8L		CAT II	RA 105/12	100 DA 1115
S-ILS 8L		CAT IIIa	RVR 07	
S-ILS 8L		CAT IIIb	RVR 06	
S-ILS 8L		CAT IIIc	NA	

## CATEGORY II & III ILS - SPECIAL AIRCREW & AIRCRAFT CERTIFICATION REQUIRED

ELEV <b>1026</b>	TDZE <b>1015</b>
------------------	------------------



HIRL all Rwy's  
TDZ/CL Rwy's 8L, 9R, 10, 26R,  
27L and 28

SE-4, 10 SEP 2020 to 08 OCT 2020

SE-4, 10 SEP 2020 to 08 OCT 2020