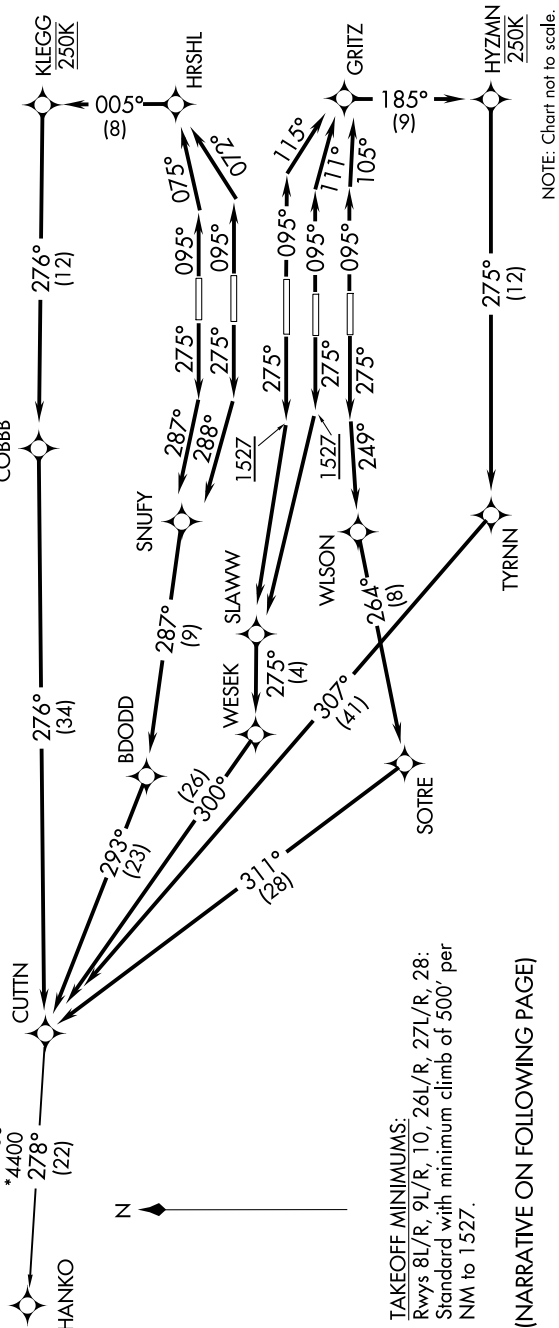


CUTTN TWO DEPARTURE (RNAV) AL-26 (FAA)

SE-4, 10 SEP 2020 to 08 OCT 2020

TOP ALTITUDE:
10000

- NOTE: If unable to accept climb rate, advise Clearance Delivery on initial contact.
- NOTE: Use departure frequency depicted unless otherwise advised.
- NOTE: For Turboprop aircraft only.
- NOTE: DME/DME/IRU or GPS Required.
- NOTE: RNAV 1.
- NOTE: RADAR Required for non-GPS equipped aircraft.
- NOTE: Transponder code will be issued via PDC or Atlanta Clearance Delivery.
- NOTE: Accelerate to 250K, if unable, advise both tower and Departure Control on initial contact.
- NOTE: Aircraft at Midfield Ramps will advise Ramp Towers of departure SID prior to pushback.
- NOTE: Upon receipt of ATC clearance (from ATL Clearance Delivery), read back only your call sign and transponder code, unless you have a question.



TAKEOFF MINIMUMS:
 Rwy 8L/R, 9L/R, 10, 26L/R, 27L/R, 28:
 Standard with minimum climb of 500' per
 NM to 1527.

(NARRATIVE ON FOLLOWING PAGE)

NOTE: Chart not to scale.

SE-4, 10 SEP 2020 to 08 OCT 2020