

APP CRS 228°	Rwy Idg TDZE Apt Elev	N/A N/A 454
------------------------	-----------------------------	--

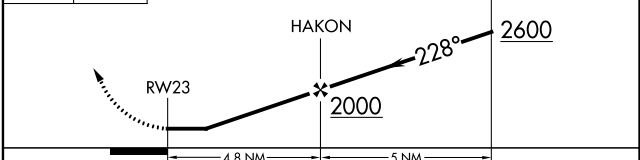
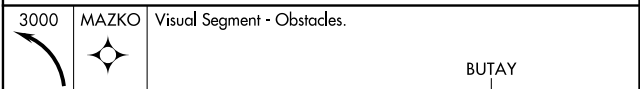
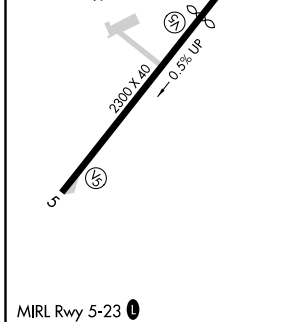
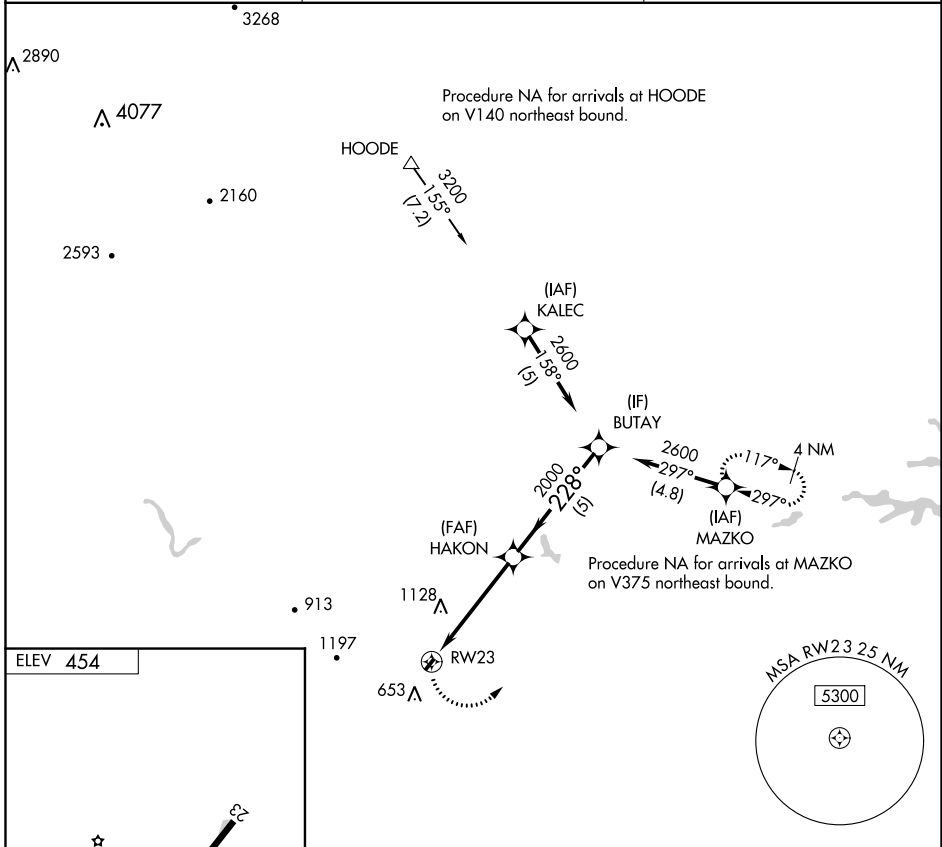
RNAV (GPS)-B

GORDONSVILLE MUNI (GVE)

▽ When local altimeter setting not received, use Orange County altimeter setting and increase all MDA 20 ft. DME/DME RNP-0.3 NA. Procedure NA at night.
▲ NA Helicopter visibility reduction below 1 SM NA.

MISSED APPROACH: Climbing left turn to 3000 direct MAZKO and hold.

AWOS-3 120.225	POTOMAC APP CON 132.85 323.125	UNICOM 123.0 (CTAF) 0
--------------------------	--	---------------------------------



CATEGORY	A	B	C	D
C CIRCLING	1520-3	1066 (1100-3)	NA	

NE-3, 13 AUG 2020 to 10 SEP 2020

NE-3, 13 AUG 2020 to 10 SEP 2020