

APP CRS	Rwy Idg	N/A
011°	TDZE	N/A
	Apt Elev	4264

RNAV (GPS)-A

HULETT MUNI (W43)

RNP APCH

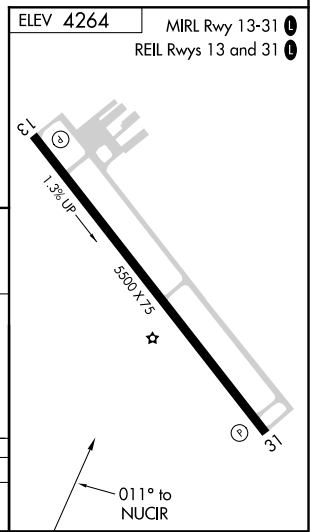
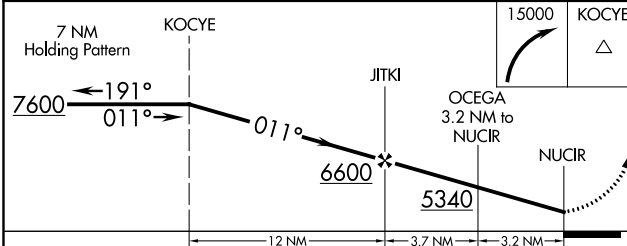
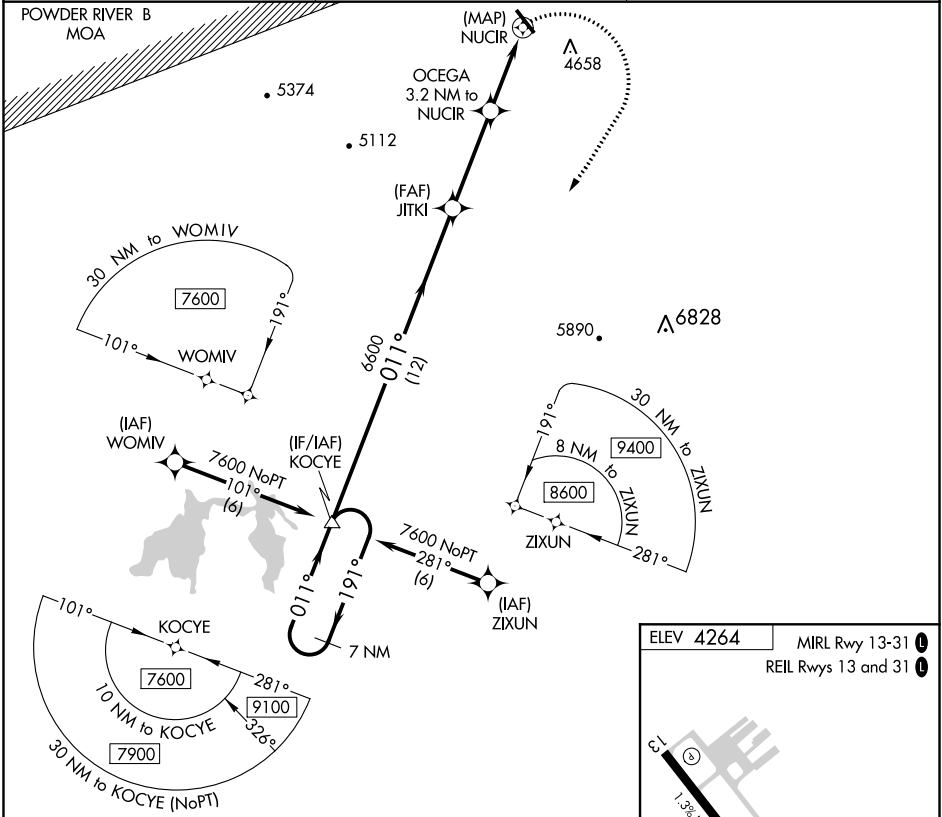
Procedure NA at night. When local altimeter setting is not received use Gillette-Campbell County altimeter setting and increase all MDA 120 feet and visibility Cat B ¼ mile.

MISSED APPROACH: Climbing right turn to 15000 direct KOCYE and hold, continue climb-in-hold to 15000.

AWOS-3PT
128.775

DENVER CENTER
127.95 338.2

UNICOM
122.8 (CTAF) 0



CATEGORY	A	B	C	D
CIRCLING	4900-1 636 (700-1)	5020-1 756 (800-1)	NA	

NW-1, 13 AUG 2020 to 10 SEP 2020

NW-1, 13 AUG 2020 to 10 SEP 2020