

APP CRS	Rwy Idg	<b>5700</b>
<b>005°</b>	TDZE	<b>6757</b>
	Apt Elev	<b>6763</b>

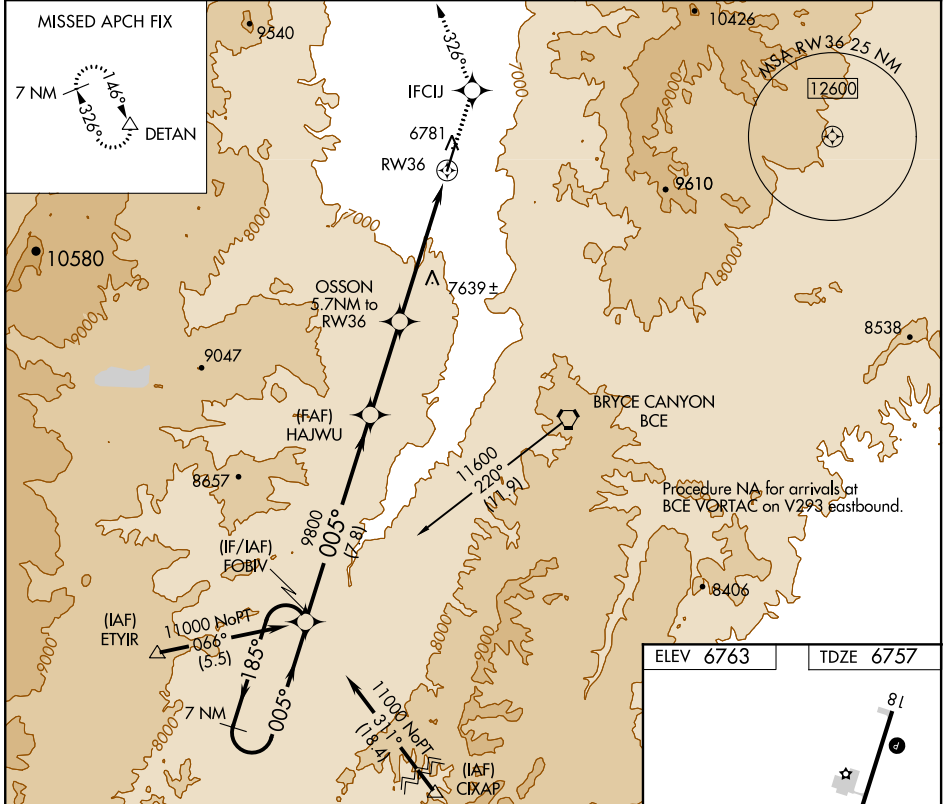
# RNAV (GPS) RWY 36

PANGUITCH MUNI (U55)

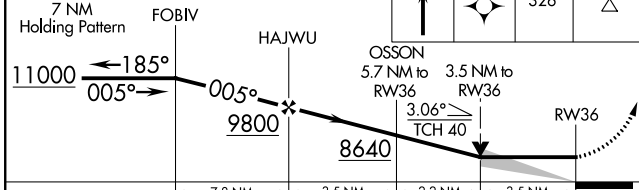
**⚠** DME/DME RNP-0.3 NA. When local altimeter setting not received use Bryce Canyon altimeter setting and increase all MDA 160 feet.  
**⚠** -28°C VDP NA with Bryce Canyon altimeter setting.

MISSED APPROACH: Climb to 12000 direct IFCU and on track 326° to DETAN and hold.

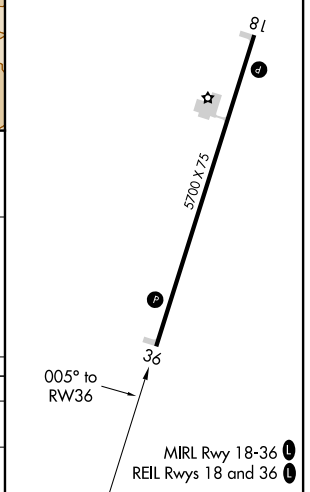
AWOS-3 <b>133.125</b>	SALT LAKE CENTER <b>133.6 269.25</b>	CTAF <b>122.9</b> <b>0</b>
--------------------------	---	-------------------------------



VGSI and descent angles not coincident (VGSI Angle 3.00/TCH 40).



ELEV 6763	TDZE 6757
-----------	-----------



CATEGORY	A	B	C	D
LNVA MDA	7900-1¼ 1143 (1200-1¼)	7900-1½ 1143 (1200-1½)		NA
<b>C</b> CIRCLING	7900-1¼ 1137 (1200-1¼)	7900-1½ 1137 (1200-1½)		NA

SW-4, 13 AUG 2020 to 10 SEP 2020

SW-4, 13 AUG 2020 to 10 SEP 2020