

APP CRS <b>327°</b>	Rwy Idg TDZE Apt Elev	<b>N/A</b> <b>N/A</b> <b>44</b>
------------------------	-----------------------------	---------------------------------------

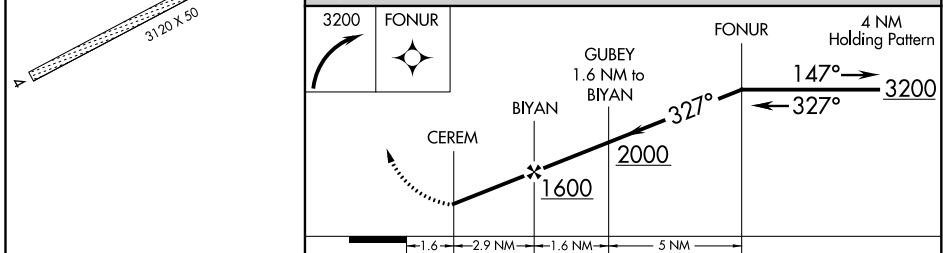
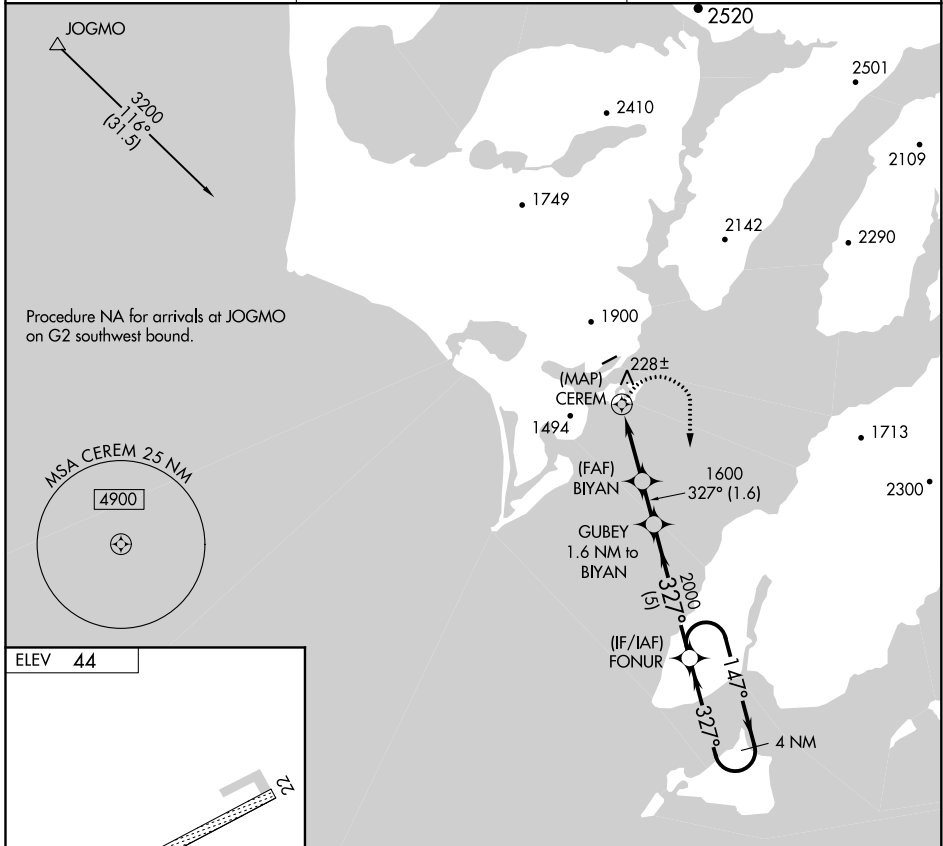
# RNAV (GPS)-A

AKHIOK (AKK) (PAKH)

**⚠** DME/DME RNP-0.3 NA. Procedure NA at night. Circling NA northwest of Rwy 4/22. If local altimeter setting not received, use Kodiak altimeter setting and increase all MDAs 800 feet.

**⚠** MISSED APPROACH: Climbing right turn to 3200 direct FONUR WP and hold.

AWOS-3P <b>118.325</b>	ANCHORAGE CENTER <b>125.1 281.4</b>	UNICOM <b>122.8 (CTAF)</b>
---------------------------	--	-------------------------------



CATEGORY	A	B	C	D
CIRCLING	580-2	536 (600-2)	NA	

AK, 16 JUL 2020 to 10 SEP 2020

AK, 16 JUL 2020 to 10 SEP 2020