

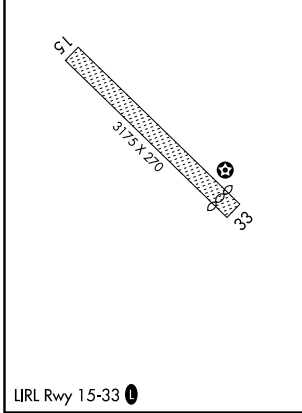
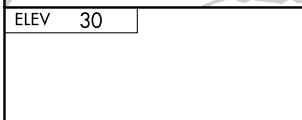
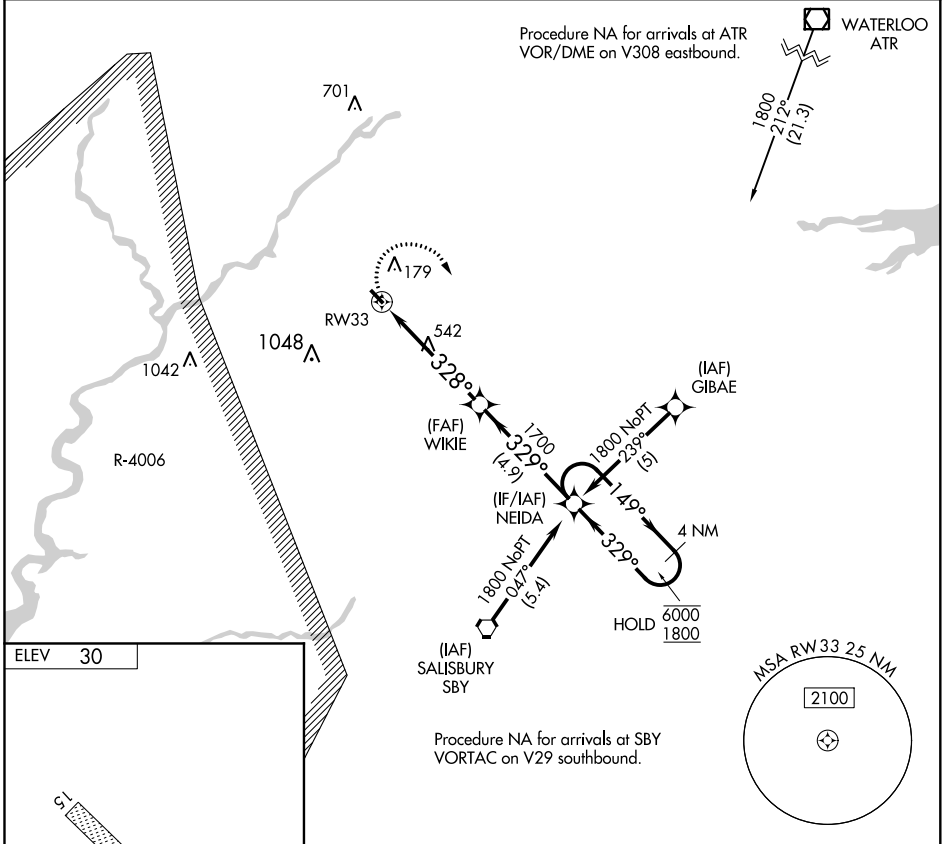
APP CRS	Rwy Idg	N/A
<b>328°</b>	TDZE	N/A
	Apt Elev	<b>30</b>

# RNAV (GPS)-A

LAUREL (N06)

RNP APCH.	Procedure NA at night. Use Salisbury altimeter setting; when not received, use Georgetown altimeter setting.	MISSED APPROACH: Climbing right turn to 1800 direct NEIDA and hold.
-----------	--	---

PATUXENT APP CON* <b>127.95 314.0</b>	UNICOM <b>122.8 (CTAF) 0</b>
--	---------------------------------



1800	NEIDA	Visual Segment - Obstacles.	4 NM Holding Pattern
CATEGORY	A	B	C D
CIRCLING	880-1¼	850 (900-1¼)	NA

NE-3, 13 AUG 2020 to 10 SEP 2020

NE-3, 13 AUG 2020 to 10 SEP 2020