

VOR/DME FAR 116.2 Chan 109	APP CRS 283°	Rwy Idg TDZE Apt Elev	3901 933 933
--	------------------------	-----------------------------	---

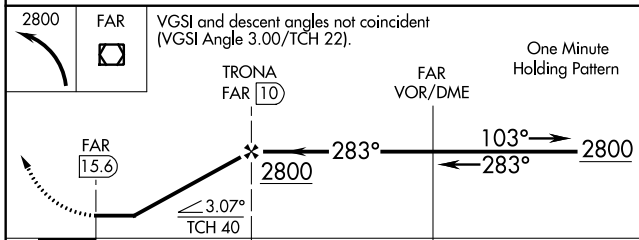
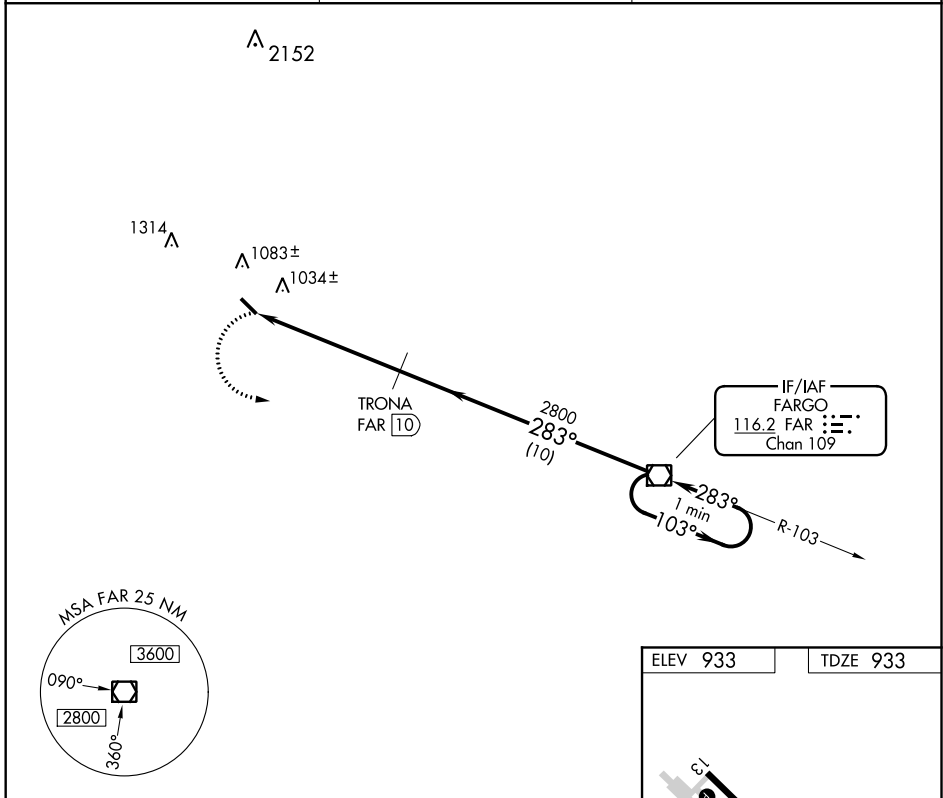
VOR/DME RWY 31

CASSELTON ROBERT MILLER RGNL (5N8)

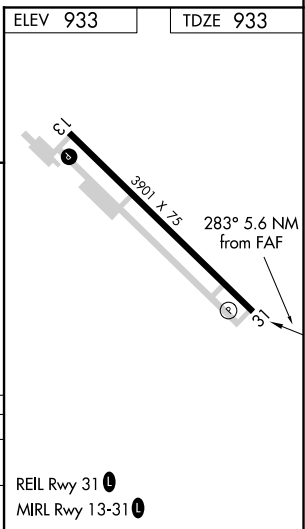
▼ Use Fargo altimeter setting; when not received, use Moorhead altimeter setting and increase all MDA 20 feet, increase Circling Cat C visibility ¼ SM.

▲ NA MISSED APPROACH: Climbing left turn to 2800 direct FAR VOR/DME and hold.

FAR ASOS 124.5	FARGO APP CON 120.4 377.15	UNICOM 122.8 (CTAF) 0
--------------------------	--------------------------------------	---------------------------------



CATEGORY	A	B	C	D
S-31	1360-1	427 (500-1)	1360-1½ 427 (500-1½)	NA
CIRCLING	1480-1	547 (600-1)	1520-1½ 587 (600-1½)	NA



NC-1, 13 AUG 2020 to 10 SEP 2020

NC-1, 13 AUG 2020 to 10 SEP 2020