

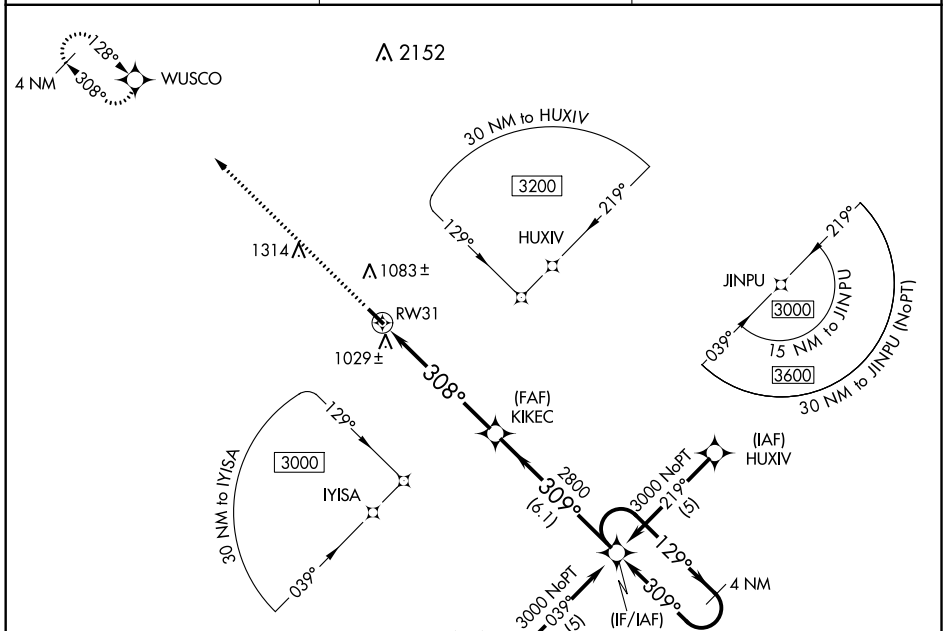
WAAS CH <b>53607</b> <b>W31A</b>	APP CRS <b>308°</b>	Rwy Idg <b>3901</b> TDZE <b>933</b> Apt Elev <b>933</b>
--	------------------------	---

# RNAV (GPS) RWY 31

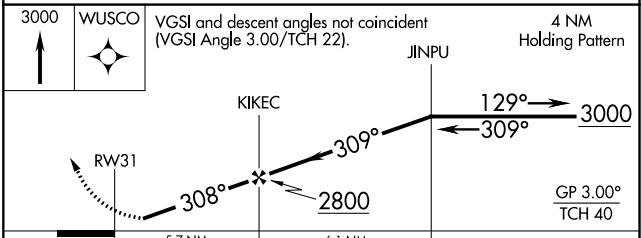
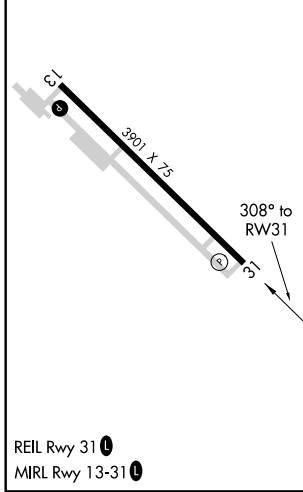
CASSELTON ROBERT MILLER RGNL (5N8)

RNP APCH.	Use Fargo altimeter setting; when not received, use Moorhead altimeter setting and increase all DA 11 feet and all MDA 20 feet, increase LNAV Cat C visibility ¼ SM, increase Circling Cat C visibility ¼ SM. Baro-VNAV NA.	MISSED APPROACH: Climb to 3000 direct WUSCO and hold.
-----------	---	---

FAR ASOS <b>124.5</b>	FARGO APP CON <b>120.4 377.15</b>	UNICOM <b>122.8 (CTAF) 0</b>
--------------------------	--------------------------------------	---------------------------------



ELEV 933	TDZE 933
----------	----------



CATEGORY	A	B	C	D
LPV DA	1226-1 293 (300-1)			NA
LNAV/VNAV DA	1370-1½ 437 (500-1½)			NA
LNAV MDA	1420-1	487 (500-1)	1420-1¼ 487 (500-1¼)	NA
CIRCLING	1480-1	547 (600-1)	1520-1½ 587 (600-1½)	NA

NC-1, 13 AUG 2020 to 10 SEP 2020

NC-1, 13 AUG 2020 to 10 SEP 2020