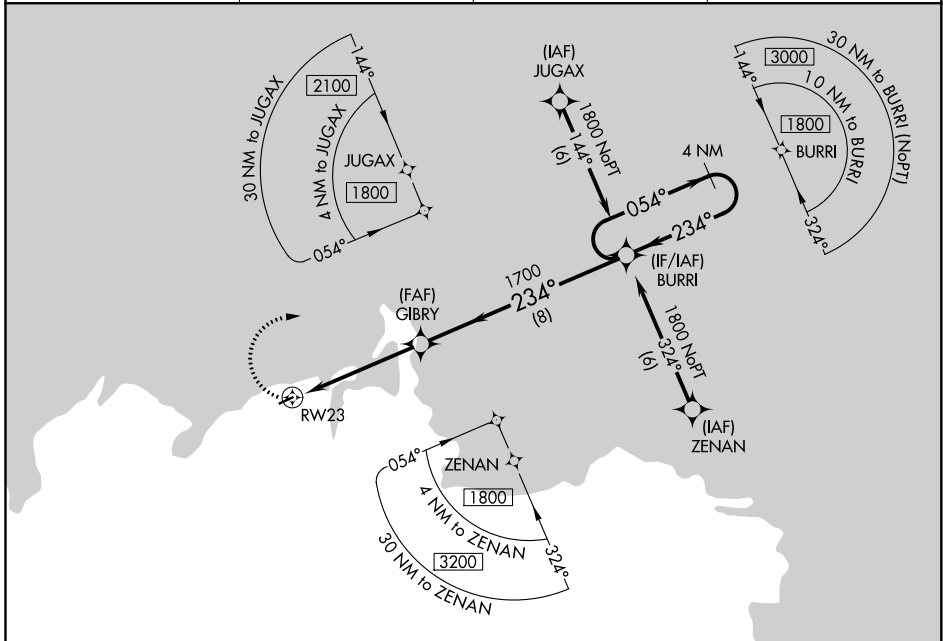


APP CRS <b>234°</b>	Rwy Idg TDZE Apt Elev	<b>3001</b> <b>53</b> <b>53</b>
------------------------	-----------------------------	---------------------------------------

# RNAV (GPS) RWY 23

MEKORYUK (MYU) (PAMY)

<p>DME/DME RNP-0.3 NA.</p>		<p>MISSED APPROACH: Climbing right turn to 1800 direct BURRI and hold.</p>	
AWOS-3P <b>123.9</b>	ANCHORAGE CENTER <b>124.5 372.0</b>	KENAI RADIO <b>122.0</b>	CTAF <b>122.9</b>



AK, 16 JUL 2020 to 10 SEP 2020

AK, 16 JUL 2020 to 10 SEP 2020

ELEV 53		TDZE 53	
<p>•763</p> <p>1800 BURRI VGSi and descent angle not coincident (VGSi Angle 3.00°/ TCH 29).</p> <p>GIBRY BURRI 4 NM Holding Pattern</p> <p>1.6 NM to RW23</p> <p>≤3.04° TCH 38</p> <p>RW23 1700 054° 1800</p> <p>234° 234°</p> <p>1.6 3.4 NM 8 NM</p>			
CATEGORY	A	B	C
LNVA MDA	600-1	547 (600-1)	600-1½ 547 (600-1½)
CIRCLING	600-1	547 (600-1)	600-1½ 547 (600-1½)
			D
			600-1¾ 547 (600-1¾)
			600-1½ 547 (600-1½)
			720-2¼ 667 (700-2¼)

