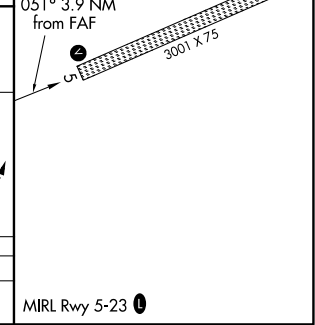
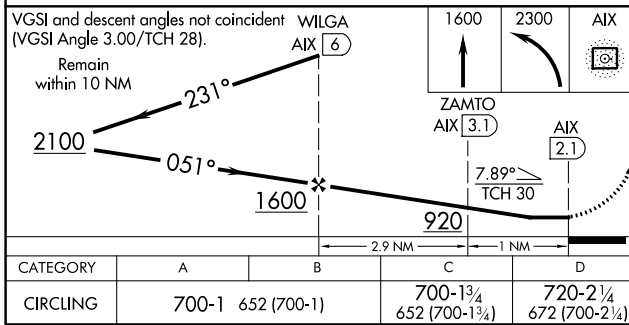
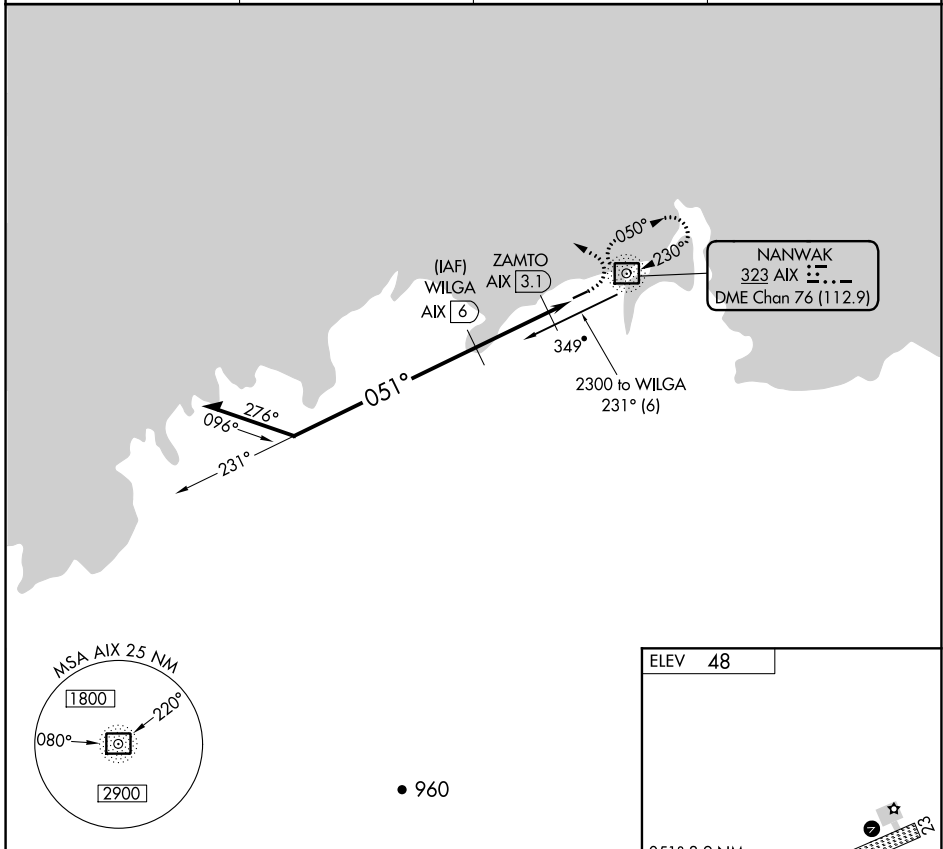


NDB/DME AIX 323	APP CRS 051°	Rwy ldg TDZE Apt Elev	N/A N/A 48
Chan 76 (112.9)			

NDB/DME-A

MEKORYUK (MYU) (PAMY)

		MISSED APPROACH: Climb to 1600, then climbing left turn to 2300 direct AIX NDB/DME and hold, continue climb-in-hold to 2300.	
AWOS-3P 123.9	ANCHORAGE CENTER 124.5 372.0	KENAI RADIO 122.0	CTAF 122.9



CATEGORY	A	B	C	D
CIRCLING	700-1	652 (700-1)	700-1¾ 652 (700-1¾)	720-2¼ 672 (700-2¼)

MIRL Rwy 5-23

AK, 16 JUL 2020 to 10 SEP 2020

AK, 16 JUL 2020 to 10 SEP 2020