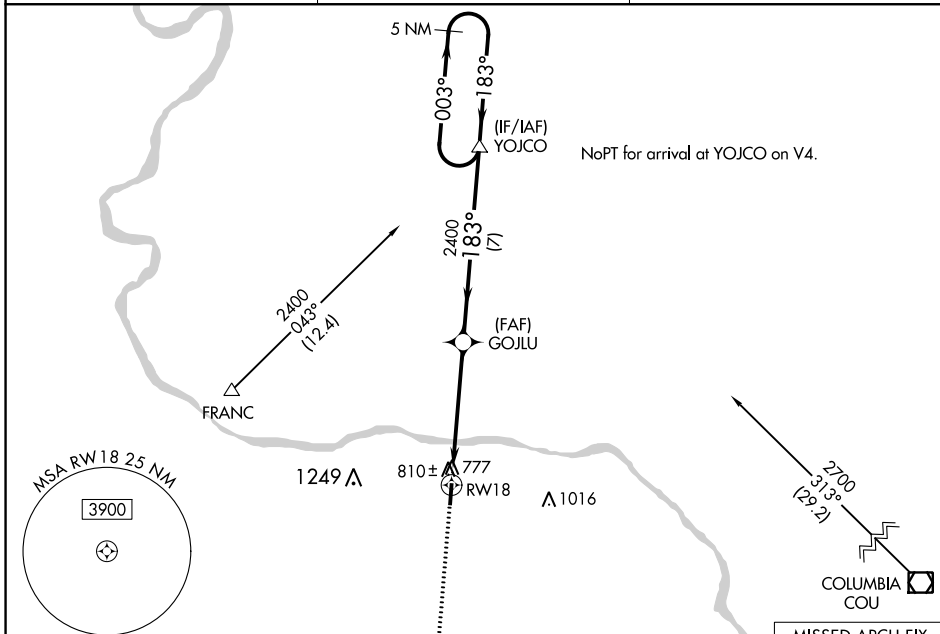


WAAS CH <b>72703</b> <b>W18A</b>	APP CRS <b>183°</b>	Rwy Idg TDZE Apt Elev	<b>4000</b> <b>715</b> <b>715</b>
--	------------------------	-----------------------------	---

# RNAV (GPS) RWY 18

JESSE VIERTEL MEMORIAL (V.E.R.)

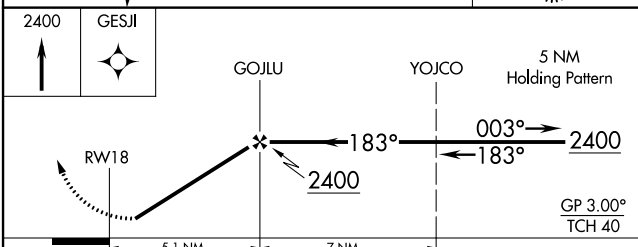
RNP APCH.		MISSED APPROACH: Climb to 2400 direct GESJ1 and hold.
<p><b>▼</b> Circling Rwy 36 NA at night. Rwy 18 helicopter visibility reduction below ¼ SM NA. Use Columbia Rgnl altimeter setting.</p> <p><b>▲</b> NA</p>		
AWOS-3 <b>119.625</b>	MIZZU APP CON <b>124.375</b>	UNICOM <b>122.7</b> (CTAF) <b>①</b>



NC-3, 13 AUG 2020 to 10 SEP 2020

NC-3, 13 AUG 2020 to 10 SEP 2020

ELEV 715	TDZE 715
<p>183° to RWY 18</p> <p>81</p> <p>4000 x 7.5</p> <p>36</p> <p>▲ 2872</p>	



CATEGORY	A	B	C	D
LPV DA	1103-1½		388 (400-1½)	NA
LNAV MDA	1140-1	425 (500-1)	1140-1¼ 425 (500-1¼)	NA
CIRCLING	1200-1	485 (500-1)	1340-1¾ 625 (700-1¾)	NA