

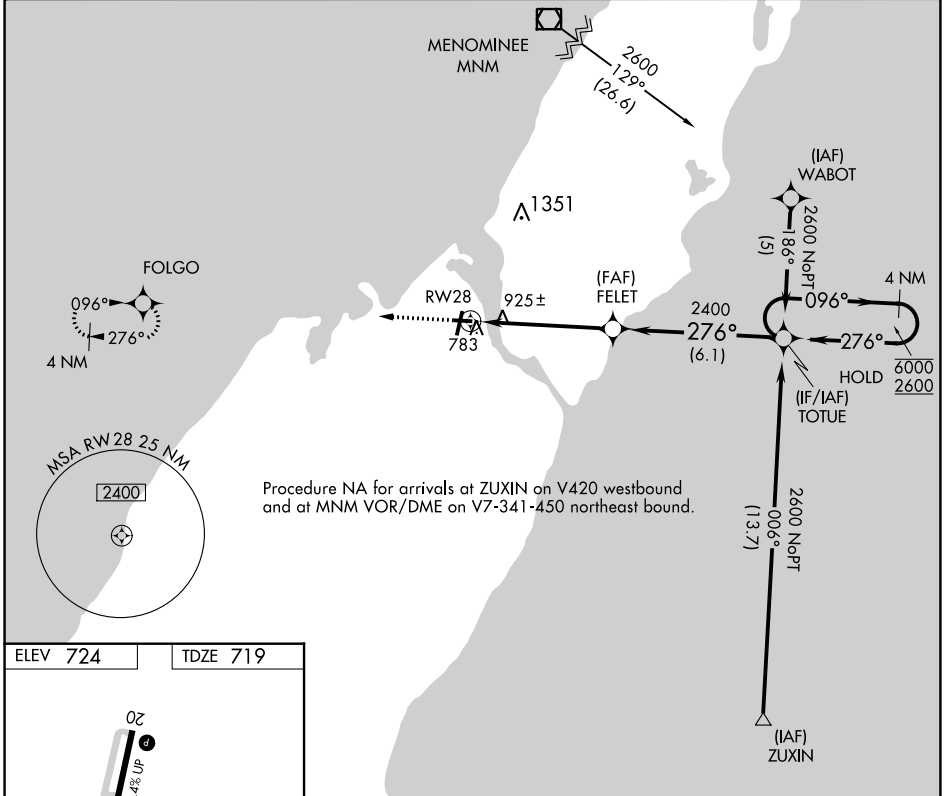
APP CRS	Rwy Idg	3199
276°	TDZE	719
	Apt Elev	724

RNAV (GPS) RWY 28

DOOR COUNTY CHERRYLAND (SUE)

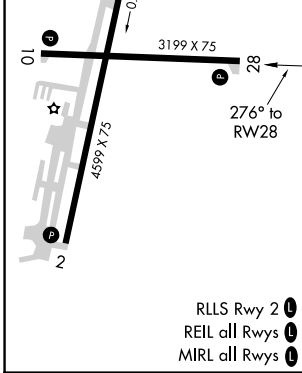
RNP APCH.	MISSED APPROACH: Climb to 2600 direct FOLGO and hold.
Rwy 28 helicopter visibility reduction below 3/4 SM NA. 	

AWOS-3 128.325	GREEN BAY APP CON ★ 119.25 338.2	UNICOM 122.7 (CTAF)
--------------------------	--	-------------------------------



EC-3, 13 AUG 2020 to 10 SEP 2020

EC-3, 13 AUG 2020 to 10 SEP 2020



2600 FOLGO Visual Segment - Obstacles.	4 NM Holding Pattern			
CATEGORY	A	B	C	D
LNAV MDA	1240-1	521 (600-1)	1240-1½ 521 (600-1½)	NA
CIRCLING	1280-1	556 (600-1)	1280-1½ 556 (600-1½)	NA