

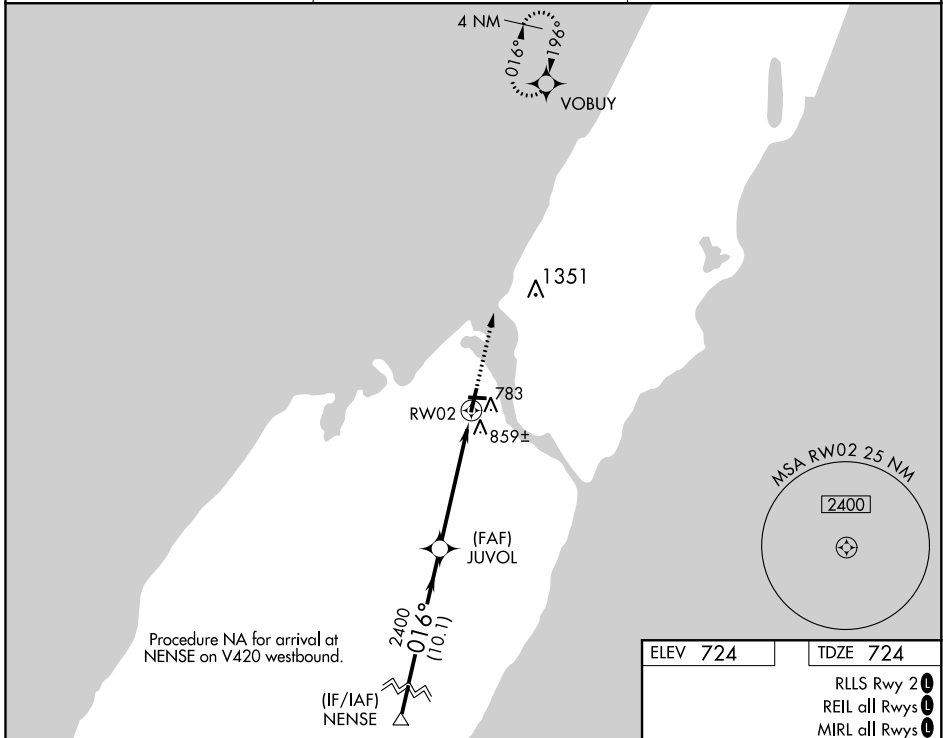
WAAS CH 81904 W02A	APP CRS 016°	Rwy Idg TDZE Apt Elev	4599 724 724
--	------------------------	-----------------------------	---

RNAV (GPS) RWY 2

DOOR COUNTY CHERRYLAND (SUE)

RNP APCH.	<p>▽ Rwy 2 helicopter visibility reduction below 3/4 SM NA. For uncompensated Baro-VNAV systems, LNAV/VNAV NA below -16°C or above 54°C.</p> <p>▲</p>	<p>MISSED APPROACH: Climb to 2600 direct VOBUY and hold.</p>
-----------	---	--

AWOS-3PT 128.325	GREEN BAY APP CON * 119.25 338.2	UNICOM 122.7(CTAF) 0
----------------------------	--	--------------------------------



EC-3, 13 AUG 2020 to 10 SEP 2020

EC-3, 13 AUG 2020 to 10 SEP 2020

