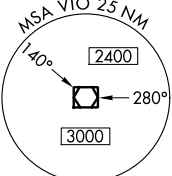
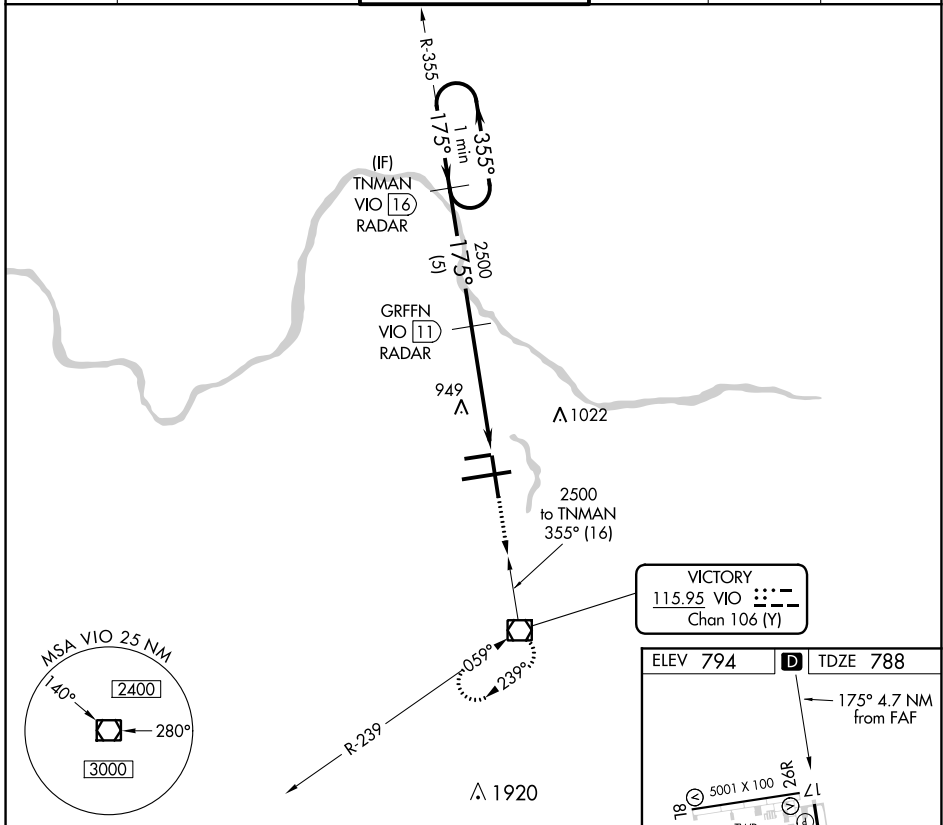


VOR/DME VIO	APP CRS	Rwy Idg	8501
115.95	175°	TDZE	788
Chan 106 (Y)		Apt Elev	794

# VOR RWY 17

GERALD R FORD INTL (G.R.)

DME or RADAR required.		MISSED APPROACH: Climb to 3000 direct VIO VOR/DME and hold.			
<p><b>⚠</b> When local altimeter setting not received, use Holland altimeter setting and increase all MDAs 80 feet and increase S-17 Cat D visibility ¼ SM. Rwy 17 helicopter visibility reduction below ¼ SM NA.</p>					
ATIS	GREAT LAKES APP CON *	GRAND RAPIDS TOWER *	GND CON	CLNC DEL	UNICOM
118.725	128.4 257.6	135.65 (CTAF) <b>0 339.8</b>	121.8	119.3	122.95



VICTORY  
115.95 VIO  
Chan 106 (Y)

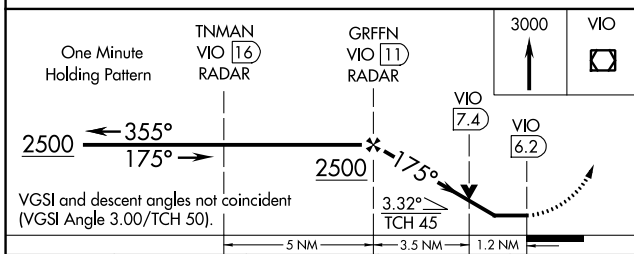
ELEV 794	<b>D</b> TDZE 788
----------	-------------------

175° 4.7 NM from FAF

MIRL Rwy 8L-26R  
REIL Rws 8L, 26R and 17  
HIRL Rws 8R-26L and 17-35

FAF to MAP 4.7 NM

Knots	60	90	120	150	180
Min:Sec	4:42	3:08	2:21	1:53	1:34



CATEGORY	A	B	C	D
S-17	1200-1	412 (500-1)	1200-1¼	412 (500-1¼)
<b>C</b> CIRCLING	1280-1	486 (500-1)	1340-1½	566 (600-2)
			546 (600-1½)	

EC-1, 13 AUG 2020 to 10 SEP 2020

EC-1, 13 AUG 2020 to 10 SEP 2020