

RNAV (GPS) RWY 26R

GERALD R FORD INTL (G.R.R.)

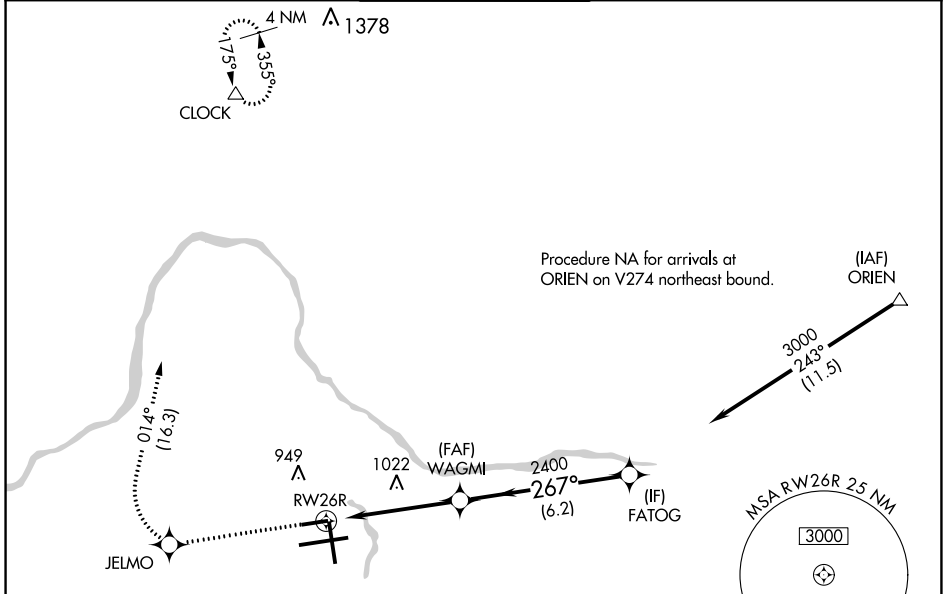
WAAS CH 82413 W26A	APP CRS 267°	Rwy Idg 5001 TDZE 787 Apt Elev 794
--	------------------------	---

RNP APCH.

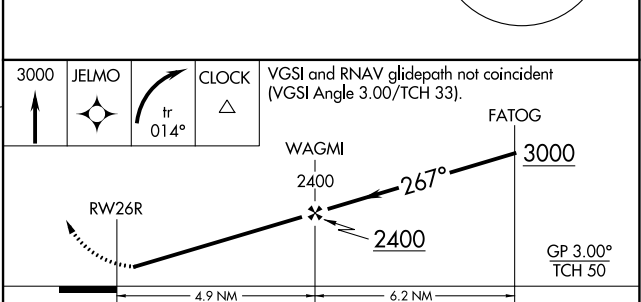
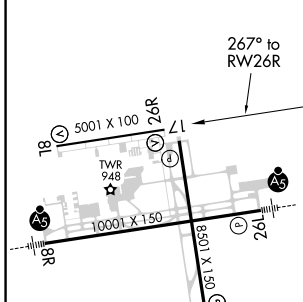
ASR For uncompensated Baro-VNAV systems, LNAV/VNAV NA below -16°C or above 47°C. Rwy 26R helicopter visibility reduction below 1 SM NA.

MISSED APPROACH: Climb to 3000 direct JELMO and right turn on track 014° to CLOCK and hold.

ATIS 118.725	GREAT LAKES APP CON * 128.4 257.6	GRAND RAPIDS TOWER * 135.65 (CTAF) 339.8	GND CON 121.8	CLNC DEL 119.3	UNICOM 122.95
------------------------	---	--	-------------------------	--------------------------	-------------------------



ELEV 794	D	TDZE 787
----------	----------	----------



CATEGORY	A	B	C	D
LPV DA	1037-1 250 (300-1)			
LNAV/VNAV DA	1216-1½ 429 (500-1½)			
LNAV MDA	1280-1 493 (500-1)	1280-1¾ 493 (500-1¾)	1280-1½ 493 (500-1½)	1280-1½ 493 (500-1½)
C CIRCLING	1280-1 486 (500-1)	1340-1½ 546 (600-1½)	1360-2 566 (600-2)	1360-2 566 (600-2)

MIRL Rwy 8L-26R **L**
REIL Rwy 8L, 17 and 26R **L**
HIRL Rwy 8R-26L and 17-35 **L**

EC-1, 13 AUG 2020 to 10 SEP 2020

EC-1, 13 AUG 2020 to 10 SEP 2020