

WAAS CH 86713 W26B	APP CRS 267°	Rwy Idg 10001 TDZE 790 Apt Elev 794
--	------------------------	--

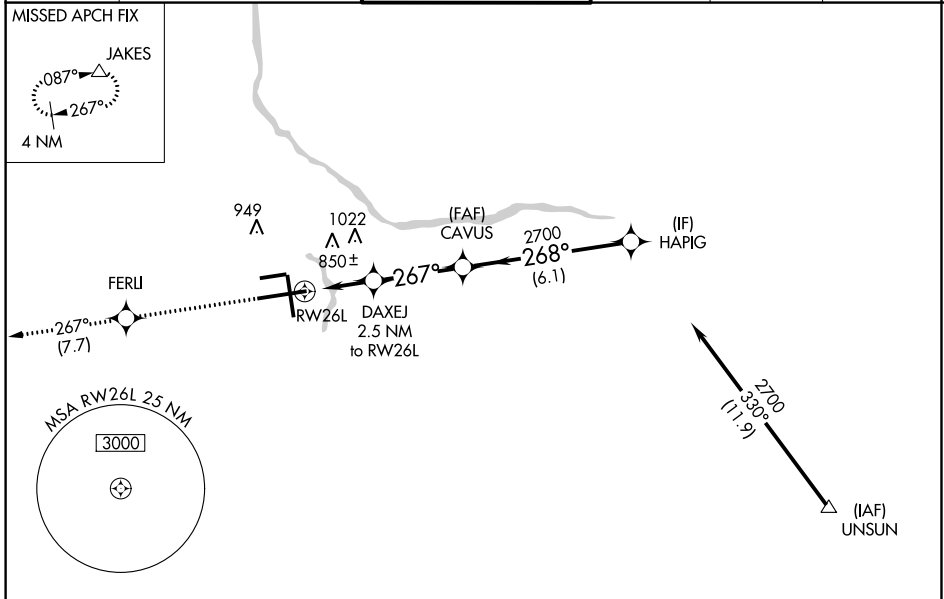
RNAV (GPS) RWY 26L

GERALD R FORD INTL (G.R.R)

ASR For uncompensated Baro-VNAV systems, LNAV/VNAV NA below -16°C (4°F) or above 54°C (130°F). DME/DME RNP-0.3 NA. For inoperative ALS, increase LNAV/VNAV Cat D visibility to RVR 5000.
** RVR 1800 authorized with use of FD or AP or HUD to DA.

MALSR
 MISSED APPROACH: Climb to 2700 direct FERLI and track 267° to JAKES and hold.

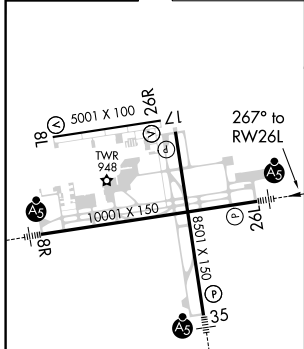
ATIS 118.725	GREAT LAKES APP CON * 128.4 257.6	GRAND RAPIDS TOWER * 135.65 (CTAF) 339.8	GND CON 121.8	CLNC DEL 119.3	UNICOM 122.95
------------------------	---	--	-------------------------	--------------------------	-------------------------



EC-1, 13 AUG 2020 to 10 SEP 2020

EC-1, 13 AUG 2020 to 10 SEP 2020

ELEV 794	D	TDZE 790
----------	----------	----------



MIRL Rwy 8L-26R
REIL Rwy 8L, 17 and 26R
HIRL Rwy 8R-26L and 17-35

2700	FERLI	tr 267°	JAKES	VGSI and RNAV glidepath not coincident (VGSI Angle 3.00/TCH 73).
			DAXEJ 2.5 NM to RW26L	CAVUS 2700
			RW26L	HAIG 2700
			* 1.3 NM to RW26L	GP 3.00° TCH 55
			* 1640	
			1.3 NM	1.2 NM
			3.2 NM	6.1 NM
CATEGORY	A	B	C	D
LPV DA **	990/24 200 (200-1/2)			
LNAV/VNAV DA	1114/24 324 (400-1/2)			1114/40 324 (400-3/4)
LNAV MDA	1280/24	490 (500-1/2)	1280/40 490 (500-3/4)	1280/50 490 (500-1)
C CIRCLING	1280-1	486 (500-1)	1340-1 1/2 546 (600-1 1/2)	1360-2 566 (600-2)