

WAAS CH <b>93932</b> <b>W01A</b>	APP CRS <b>007°</b>	Rwy ldg TDZE Apt Elev	<b>8001</b> <b>1387</b> <b>1409</b>
--	------------------------	-----------------------------	---

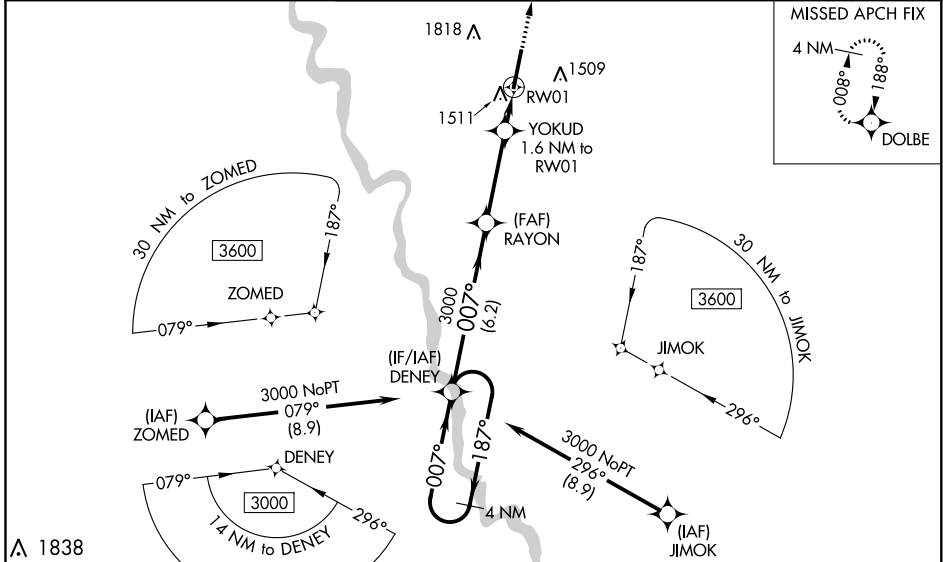
# RNAV (GPS) RWY 1

BEECH FACTORY (BEC)

**V** Baro-VNAV NA when using Wichita Dwight D Eisenhower National altimeter setting.  
**Δ NA** For uncompensated Baro-VNAV systems, LNAV/VNAV NA below -17°C (2°F) or above 54°C (130°F). DME/DME RNP-0.3 NA. Obtain local altimeter setting on CTAF; when not received, use Wichita Dwight D Eisenhower National altimeter setting and increase all DA 36 feet and all MDA 40 feet; increase LPV all Cats and LNAV/VNAV all Cats visibility 1/8 mile, LNAV Cat C and D and Circling Cat C and D visibility 1/4 mile.

MISSED APPROACH:  
Climb to 3000 direct  
DOLBE and hold.

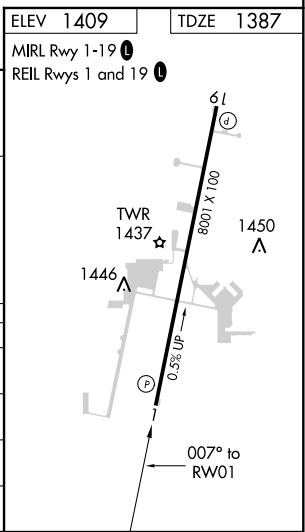
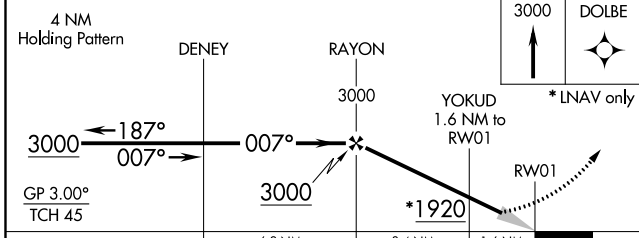
AWOS-3PT <b>119.45</b>	WICHITA APP CON <b>134.8 269.1</b>	BEECH TOWER ★ <b>126.8 (CTAF) 0 313.6</b>	GND CON <b>121.7</b>	CLNC DEL <b>125.0</b> (When tower closed)	UNICOM <b>122.95</b>
---------------------------	---------------------------------------	--	-------------------------	---	-------------------------



NC-2, 13 AUG 2020 to 10 SEP 2020

NC-2, 13 AUG 2020 to 10 SEP 2020

ELEV <b>1409</b>	TDZE <b>1387</b>
MIRL Rwy 1-19 <b>1</b>	REIL Rws 1 and 19 <b>1</b>



CATEGORY	A	B	C	D
LPV DA	1637-3/4		250 (300-3/4)	
LNAV/VNAV DA	1688-1		301 (300-1)	
LNAV MDA	1780-1	393 (400-1)	1780-1 1/8	393 (400-1 1/8)
<b>C</b> CIRCLING	1820-1 411 (500-1)	2120-1 711 (800-1)	2120-2 711 (800-2)	2120-2 1/4 711 (800-2 1/4)