

# TACAN RWY 12

TACAN Chan	MIJ 79	APCH CRS 117°	Rwy ldg 10,000 TDZE 4346 Arprt Elev 4351
------------	--------	---------------	--

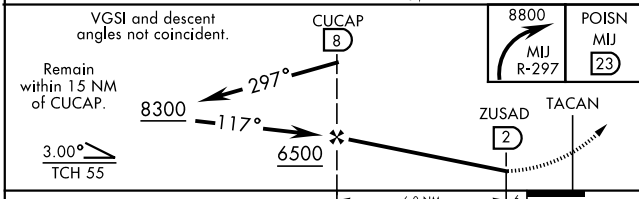
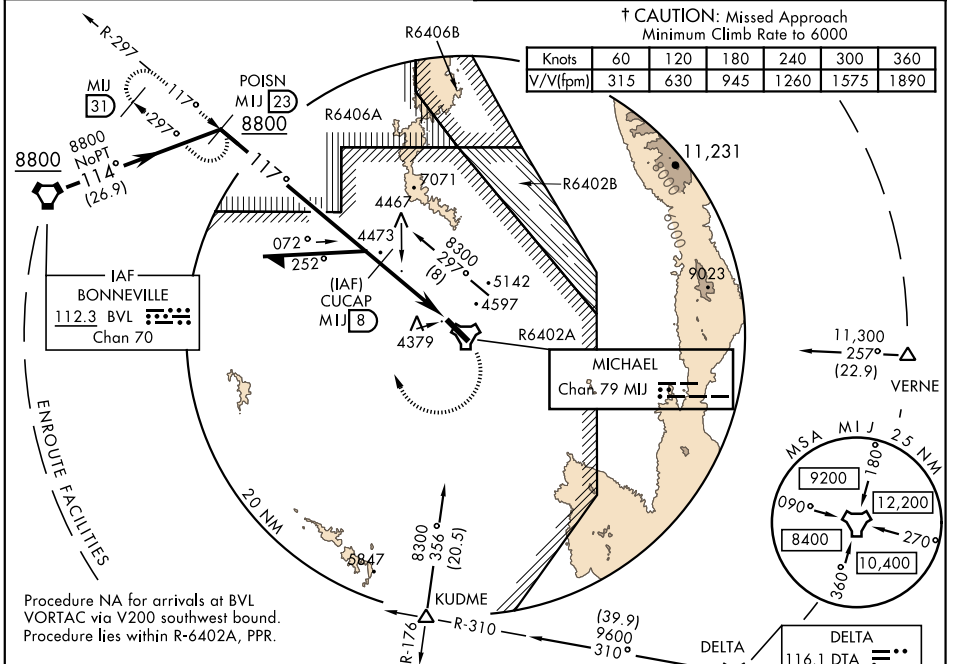
AL-5071 [USA]

MICHAEL AAF (KDPG)

**NA** \* Obtain local altimeter setting on CTAF; when not received, use Wendover altimeter setting.

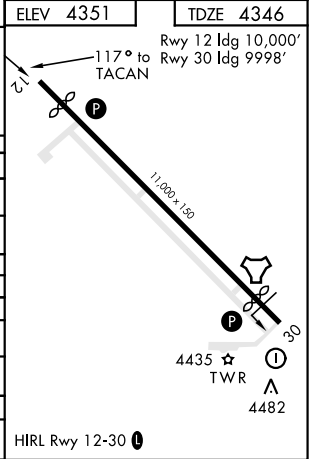
**MISSED APPROACH:** Climbing right turn to 8800 via MIJ TACAN R-297 to POISN/MIJ 23 DME and hold.

<b>CLOVER CON</b> <b>134.1 363.5</b>	<b>CTAF</b> <b>0 126.2 270.3</b>
---	-------------------------------------



ELEV 4351	TDZE 4346
-----------	-----------

CATEGORY	A	B	C	D	E
S-12	4800-1	454 (500-1)	4800-1 $\frac{3}{8}$ 454 (500-1 $\frac{3}{8}$ )	5200-2 $\frac{1}{2}$ 854 (900-2 $\frac{1}{2}$ )	
<b>CIRCLING</b>	4800-1 449 (500-1)	4920-1 569 (600-1)	5160-2 $\frac{1}{4}$ 809 (900-2 $\frac{1}{4}$ )	5880-3 1529 (1600-3)	6200-3 1849 (1900-3)
† BELOW MINIMA REQUIRES MISSED APPROACH CLIMB GRADIENT OF 315 ft/NM					
S-12	NA		4800-1 $\frac{3}{8}$ 454 (500-1 $\frac{3}{8}$ )		
* WENDOVER ALTIMETER SETTING MINIMUMS					
S-12	4960-1	614 (700-1)	4960-1 $\frac{3}{4}$ 614 (700-1 $\frac{3}{4}$ )	5360-3 1014 (1100-3)	
<b>CIRCLING</b>	4960-1 609 (700-1)	5080-1 729 (800-1)	5320-3 969 (1000-3)	6040-3 1689 (1700-3)	6360-3 2009 (2100-3)
† BELOW MINIMA REQUIRES MISSED APPROACH CLIMB GRADIENT OF 315 ft/NM					
S-12	NA		4960-1 $\frac{3}{4}$ 614 (700-1 $\frac{3}{4}$ )	4960-3 614 (700-3)	



# TACAN RWY 12

SW-4, 13 AUG 2020 to 10 SEP 2020

SW-4, 13 AUG 2020 to 10 SEP 2020