

WAPAX TWO DEPARTURE (WAPAX2 • WAPAX) SH-1729 [USAF]

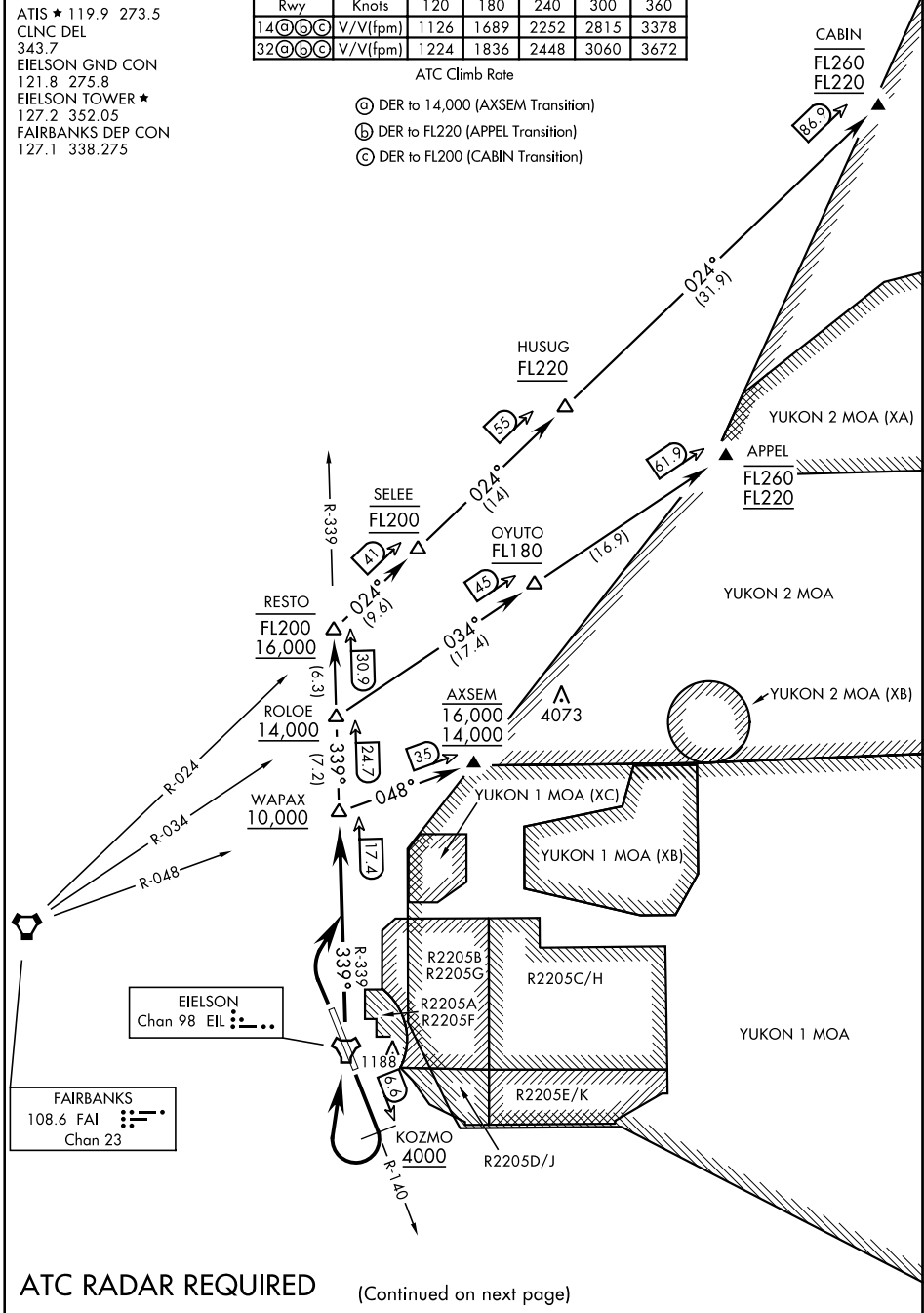
EIELSON AFB (PAEI)
FAIRBANKS, ALASKA

ATIS ★ 119.9 273.5
 CLNC DEL
 343.7
 EIELSON GND CON
 121.8 275.8
 EIELSON TOWER ★
 127.2 352.05
 FAIRBANKS DEP CON
 127.1 338.275

Rwy	Knots	120	180	240	300	360
14 (C)(C)(C)	V/V(fpm)	1126	1689	2252	2815	3378
32 (C)(C)(C)	V/V(fpm)	1224	1836	2448	3060	3672

ATC Climb Rate

- ⊙ DER to 14,000 (AXSEM Transition)
- Ⓟ DER to FL220 (APPEL Transition)
- Ⓢ DER to FL200 (CABIN Transition)



AK, 16 JUL 2020 to 10 SEP 2020

AK, 16 JUL 2020 to 10 SEP 2020

ATC RADAR REQUIRED

(Continued on next page)

WAPAX TWO DEPARTURE (WAPAX2 • WAPAX)

FAIRBANKS, ALASKA
EIELSON AFB (PAEI)