

# TACAN RWY 32

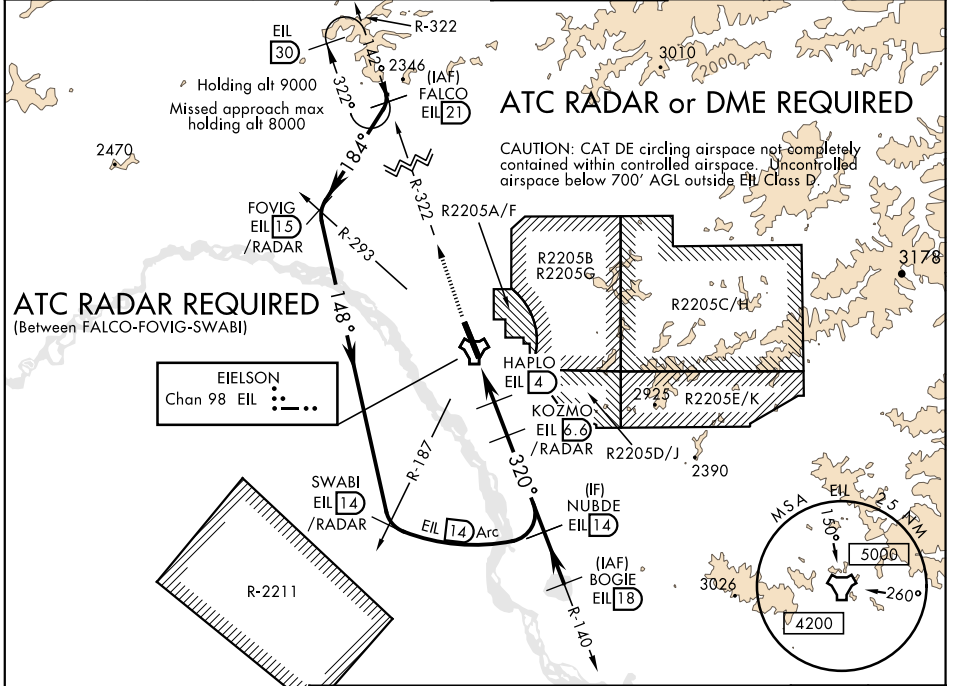
TACAN EIL Chan 98	APCH CRS 320°	Rwy ldg 14,530 TDZE 548 Arprt Elev 548	AL-1729 [USAF]	EIELSON AFB (PAEI)
----------------------	------------------	--	----------------	--------------------

▼ \* When ALS inop, increase CAT AB RVR to 55 and vis to 1 mile, CAT CDE RVR to 60 and vis to 1½ miles.  
 \*\* Circling not authorized E of Rwy 14-32.

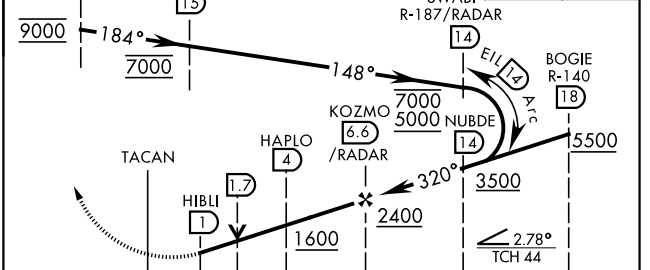
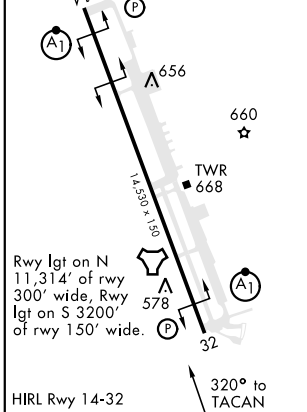
ALSF-1  


MISSED APPROACH: Climb to 6000 on EIL TACAN R-322 to FALCO and hold, Continue climb-in-hold to 6000.

ATIS ★ 119.9 273.5	ASOS 118.525	FAIRBANKS APP CON 127.1 251.1 (360°-179°) 125.35 363.2 (180°-359°)	EIELSON TOWER ★ 127.2 352.05	GND CON 121.8 275.8	CLNC DEL 343.7
-----------------------	-----------------	--	---------------------------------	------------------------	-------------------



EMERG SAFE ALT 100 NM 16,000	FALCO R-322/RADAR EIL 21	FOVIG R-293/RADAR EIL 15	SWABI R-187/RADAR EIL 14	6000 EIL R-322	FALCO R-322 EIL 21
ELEV 548	TDZE 548				



CATEGORY	A	B	C	D	E
S-32*	940/24	392 (400-½)	940/35	392 (400-¾)	
** CIRCLING	1000-1 452 (500-1)	1060-1 512 (600-1)	1100-1½ 552 (600-1½)	1260-2¼ 712 (800-2¼)	1260-2½ 712 (800-2½)

# TACAN RWY 32

AK, 16 JUL 2020 to 10 SEP 2020

AK, 16 JUL 2020 to 10 SEP 2020