

TACAN RWY 14

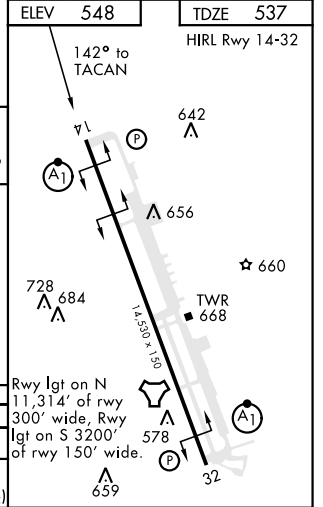
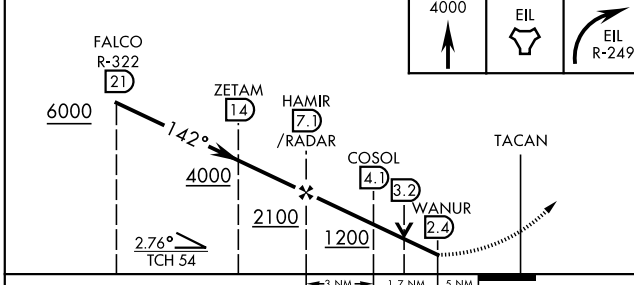
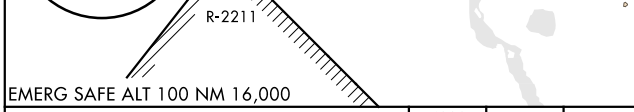
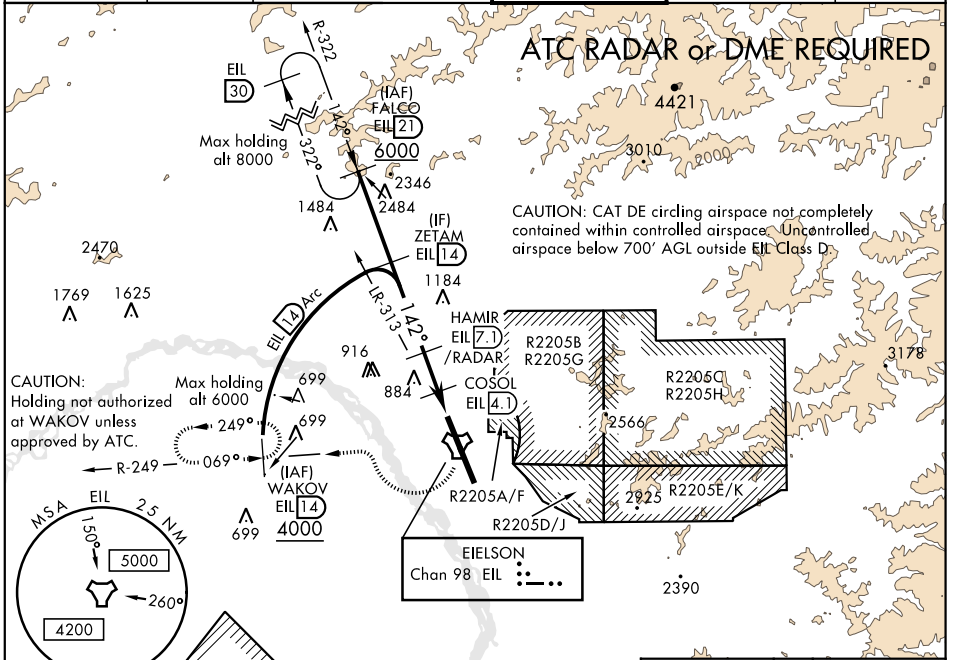
TACAN EIL Chan 98	APCH CRS 142°	Rwy Ldg 14,530 TDZE 537 Arpt Elev 548	AL-1729 [USAF]	EIELSON AFB (PAEI)
----------------------	------------------	---	----------------	--------------------

▼ * When ALS inop, increase CAT AB RVR to 55 and vis to 1 mile, CAT CDE vis to 1½ miles.
 ** Circling not authorized E of Rwy 14-32.

ALSF-1

MISSED APPROACH: Climb to 4000 direct EIL TACAN, continue climbing right turn to intercept EIL TACAN R-249 to WAKOV and hold. Continue climb-in hold to 4000.

ATIS ★ 119.9 273.5	ASOS 118.525	FAIRBANKS APP CON 127.1 251.1 (360°-179°) 125.35 363.2 (180°-359°)	EIELSON TOWER ★ 127.2 352.05	GND CON 121.8 275.8	CLNC DEL 343.7
-----------------------	-----------------	--	---------------------------------	------------------------	-------------------



CATEGORY	A	B	C	D	E
S-14 *	960/24 423 (500-½)		960/40 423 (500-¾)		
CIRCLING **	1000-1 452 (500-1)	1060-1 512 (600-1)	1100-1½ 552 (600-1½)	1260-2¼ 712 (800-2¼)	1260-2½ 712 (800-2½)

TACAN RWY 14

AK, 16 JUL 2020 to 10 SEP 2020

AK, 16 JUL 2020 to 10 SEP 2020