

FAIRBANKS, ALASKA

RNAV (GPS) RWY 14

APCH CRS 140°	Rwy Idg 14,530
	TDZE 537
	Arprt Elev 548

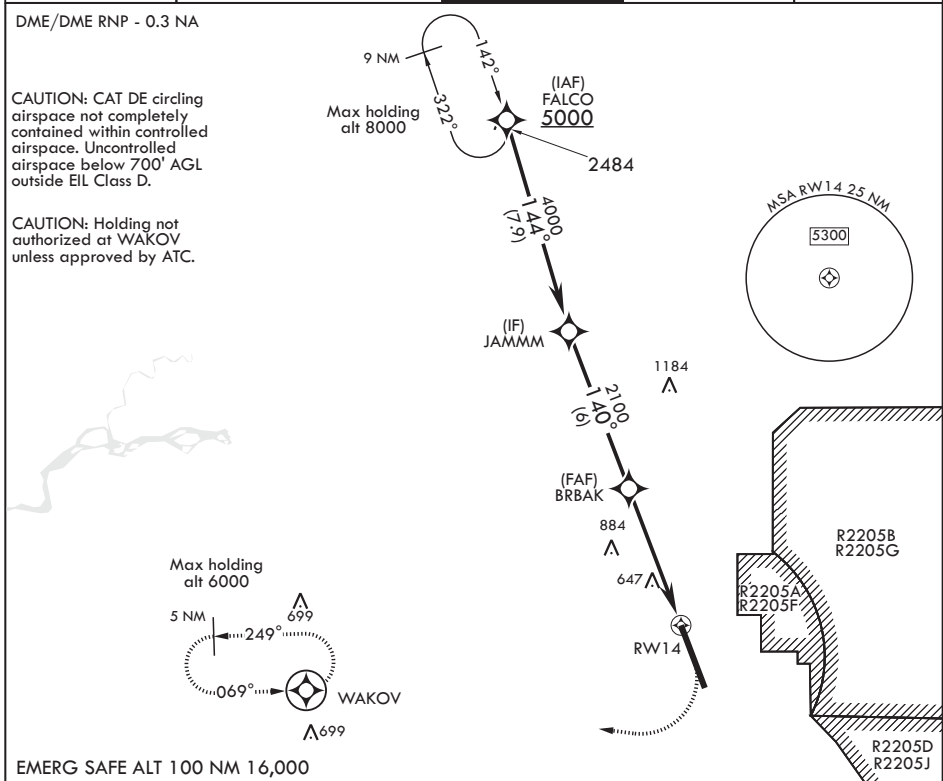
AL-1729 (USAF)

EIELSON AFB (PAEI)

V * When ALS inop, increase RVR to 55 and vis to 1 mile.
** Circling not authorized E Rwy 14-32.

ALSF-1 MISSED APPROACH: Climb to 1000 then climbing right turn to 4000 direct WAKOV and hold, continue climb-in-hold to 4000.

ATIS* 119.9 273.5	FAIRBANKS APP CON 125.35 363.2 180°-359° 127.1 251.1 360°-179°	TOWER* 127.2 352.05	GND CON 121.8 275.8	CLNC DEL 343.7
------------------------------------	---	--------------------------------------	--------------------------------------	---------------------------------



FALCO 5000	JAMMM	BRBAK 2100	1.1 NM to RWY 14	RWY 14	WAKOV ELEV 548	TDZE 537
1000	4000	WAKOV	ELEV 548			
5000	4000	2100	5.2 NM			
2.73° ≥ TCH 54						
CATEGORY	A	B	C	D	E	
LNAV MDA*	900/24 363 (400-½)		900/35 363 (400-¾)			
CIRCLING**	1000-1 452 (500-1)	1060-1 512 (600-1)	1100-1½ 552 (600-1½)	1260-2¼ 712 (800-2¼)	1260-2½ 712 (800-2½)	

Rwy lgt on N 11,314' of rwy 300' wide.
Rwy lgt on S 3200' of rwy 150' wide.
BCN 660
TWR 668
HIRL all Rwys
728
659
32

FAIRBANKS, ALASKA
Amdt 5 08NOV18
TERPS

64°40'N - 147°06'W

EIELSON AFB (PAEI)

RNAV (GPS) RWY 14

AK, 16 JUL 2020 to 10 SEP 2020

AK, 16 JUL 2020 to 10 SEP 2020