

FAIRBANKS, ALASKA

# ILS or LOC/DME RWY 32

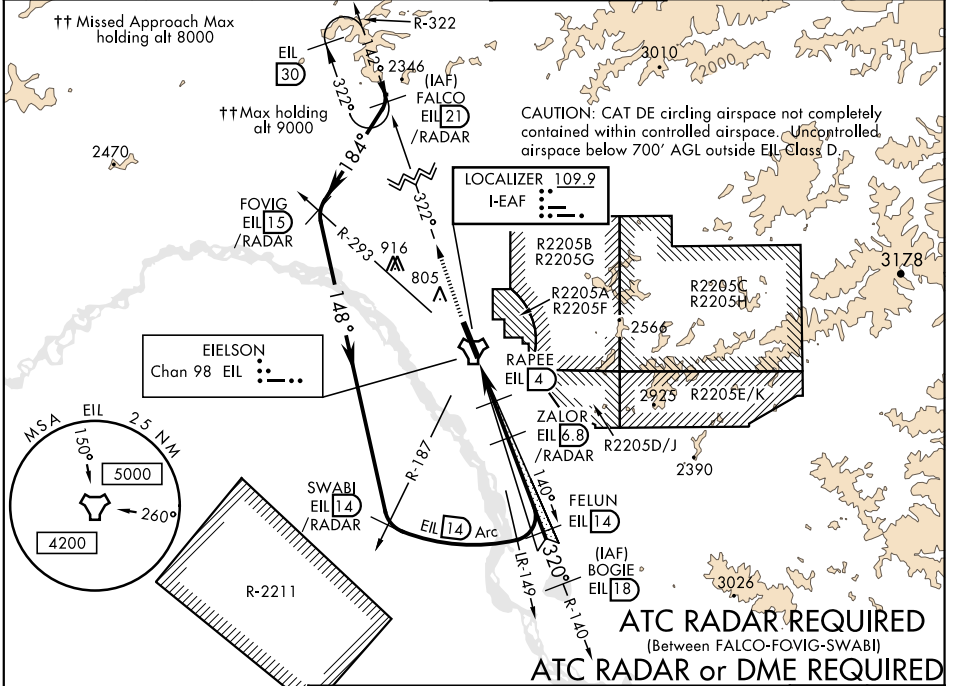
LOC I-EAF <b>109.9</b>	APCH CRS <b>320°</b>	Rwy Ldg <b>14,530</b> TDZE <b>548</b> Arprt Elev <b>548</b>
---------------------------	-------------------------	--

AL-1729 [USAF]

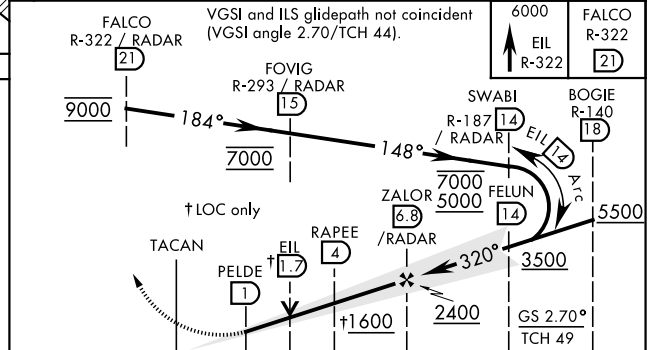
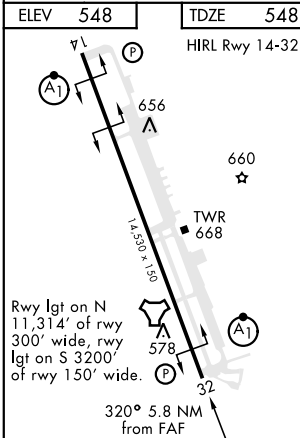
EIELSON AFB (PAEI)

▼\*\* When ALS inop, increase RVR to 40 and vis to ¼ mile. ALSF-1  
 \*\*\* Circling not authorized E of Rwy 14-32. (A1) MISSED APPROACH: Climb to 6000 on EIL TACAN R-322 to FALCO and hold. Continue climb-in-hold to 6000.

ATIS ★ <b>119.9 273.5</b>	ASOS <b>118.525</b>	FAIRBANKS APP CON <b>127.1 251.1 (360°-179°)</b> <b>125.35 363.2 (180°-359°)</b>	EIELSON TOWER ★ <b>127.2 352.05</b>	GND CON <b>121.8 275.8</b>	CLNC DEL <b>343.7</b>
------------------------------	------------------------	--	--	-------------------------------	--------------------------



EMERG SAFE ALT 100 NM 16,000  
 ELEV 548 TDZE 548



CATEGORY	A	B	C	D	E
S-ILS 32*	748/24 200 (200-½)				
S-LOC 32**	940/24	392 (400-½)	940/35	392	(400-¾)
CIRCLING ***	1000-1 452 (500-1)	1060-1 512 (600-1)	1100-1½ 552 (600-1½)	1260-2½ 712 (800-2½)	1260-2½ 712 (800-2½)

FAIRBANKS, ALASKA

64° 40' N-147° 06' W

EIELSON AFB (PAEI)

Amdt 6 05DEC19  
TERPS

# ILS or LOC/DME RWY 32

AK, 16 JUL 2020 to 10 SEP 2020

AK, 16 JUL 2020 to 10 SEP 2020