

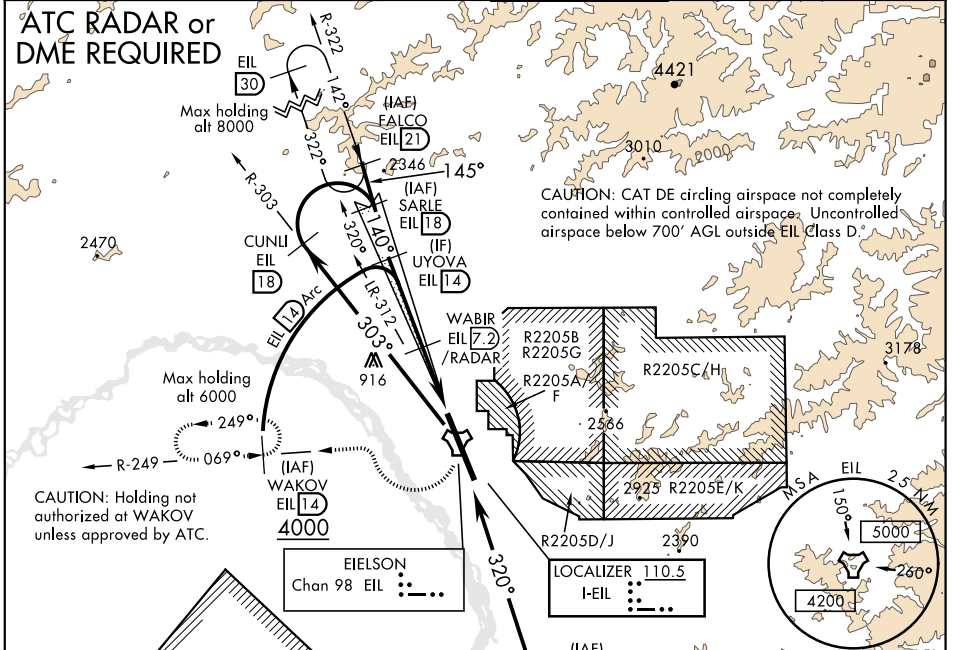
ILS or LOC/DME RWY 14

LOC I-EIL 110.5	APCH CRS 140°	Rwy lgt 14,530 TDZE 537 Arpt Elev 548	AL-1729 [USAF]	EIELSON AFB (PAEI)
---------------------------	-------------------------	--	----------------	--------------------

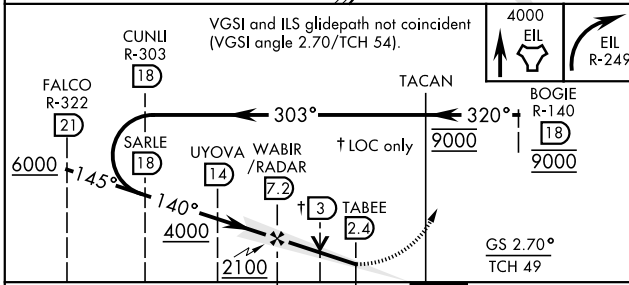
▽ * When ALS inop, increase RVR to 40, and vis to ¾ mile.
 ** When ALS inop, increase RVR to 55, and vis to 1 mile.
 *** Circling not authorized E of Rwy 14-32.

ALSF-1 MISSED APPROACH: Climb to 4000 direct EIL TACAN, continue climbing right turn to intercept EIL R-249 to WAKOV and hold. Continue climb-in-hold to 4000.

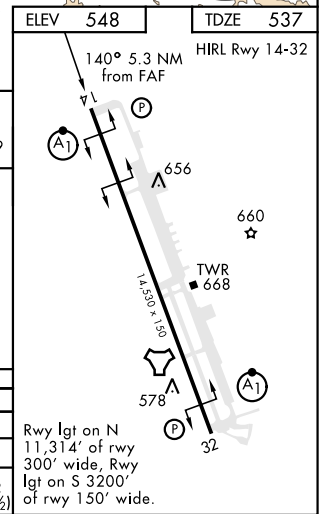
ATIS ★ 119.9 273.5	ASOS 118.525	FAIRBANKS APP CON 127.1 251.1 (360°-179°) 125.35 363.2 (180°-359°)	EIELSON TOWER ★ 127.2 352.05	GND CON 121.8 275.8	CLNC DEL 343.7
------------------------------	------------------------	--	--	-------------------------------	--------------------------



CAUTION: Holding not authorized at WAKOV unless approved by ATC.
 EIELSON Chan 98 EIL :...
 LOCALIZER 110.5 I-EIL :...
 EMERG SAFE ALT 100 NM 16,000



CATEGORY	A	B	C	D	E
S-ILS 14*	737/24		200	(200-½)	
S-LOC 14**	900/24	363 (400-½)	900/35	363	(400-¾)
CIRCLING***	1000-1 452 (500-1)	1060-1 512 (600-1)	1100-1½ 552 (600-1½)	1260-2¼ 712 (800-2¼)	1260-2½ 712 (800-2½)



ILS or LOC/DME RWY 14

AK, 16 JUL 2020 to 10 SEP 2020

AK, 16 JUL 2020 to 10 SEP 2020