

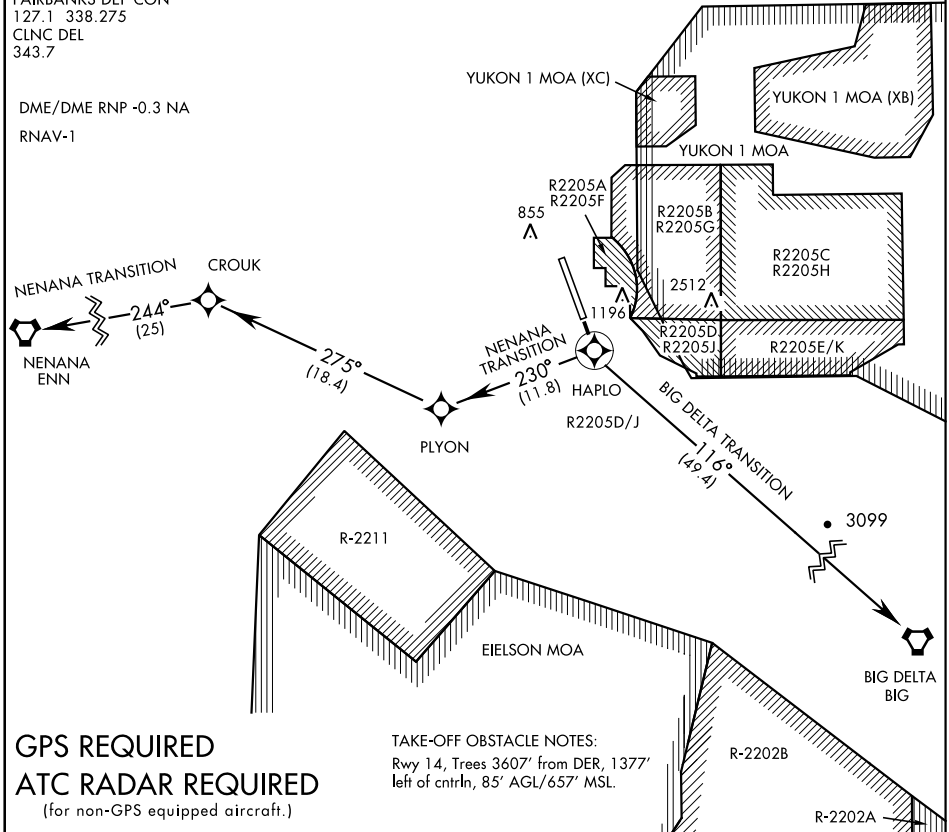
# HAPLO THREE DEPARTURE (RNAV) (HAPLO3•HAPLO)

EIELSON AFB (PAEI)  
FAIRBANKS, ALASKA

ATIS ★  
119.9 273.5  
EIELSON GND CON  
121.8 275.8  
EIELSON TOWER ★  
127.2 352.05  
FAIRBANKS DEP CON  
127.1 338.275  
CLNC DEL  
343.7

SL-1729 [USAF]

DME/DME RNP -0.3 NA  
RNAV-1



AK, 16 JUL 2020 to 10 SEP 2020

AK, 16 JUL 2020 to 10 SEP 2020

**GPS REQUIRED**  
**ATC RADAR REQUIRED**  
(for non-GPS equipped aircraft.)

TAKE-OFF OBSTACLE NOTES:  
Rwy 14, Trees 3607' from DER, 1377'  
left of cntrln, 85' AGL/657' MSL.

**DEPARTURE ROUTE DESCRIPTION**

TAKE-OFF RWY 14 (HAPLO3•HAPLO): Climb direct HAPLO, thence...

BIG DELTA TRANSITION (HAPLO3•BIG): Turn left, track 116° to BIG VORTAC.

NENANA TRANSITION (HAPLO3•ENN): Turn right, track 230° to PLYON then track 275° to CROUK, then track 244° to ENN VORTAC.

# HAPLO THREE DEPARTURE (RNAV) (HAPLO3•HAPLO)

Orig 13SEP18

FAIRBANKS, ALASKA  
EIELSON AFB (PAEI)