

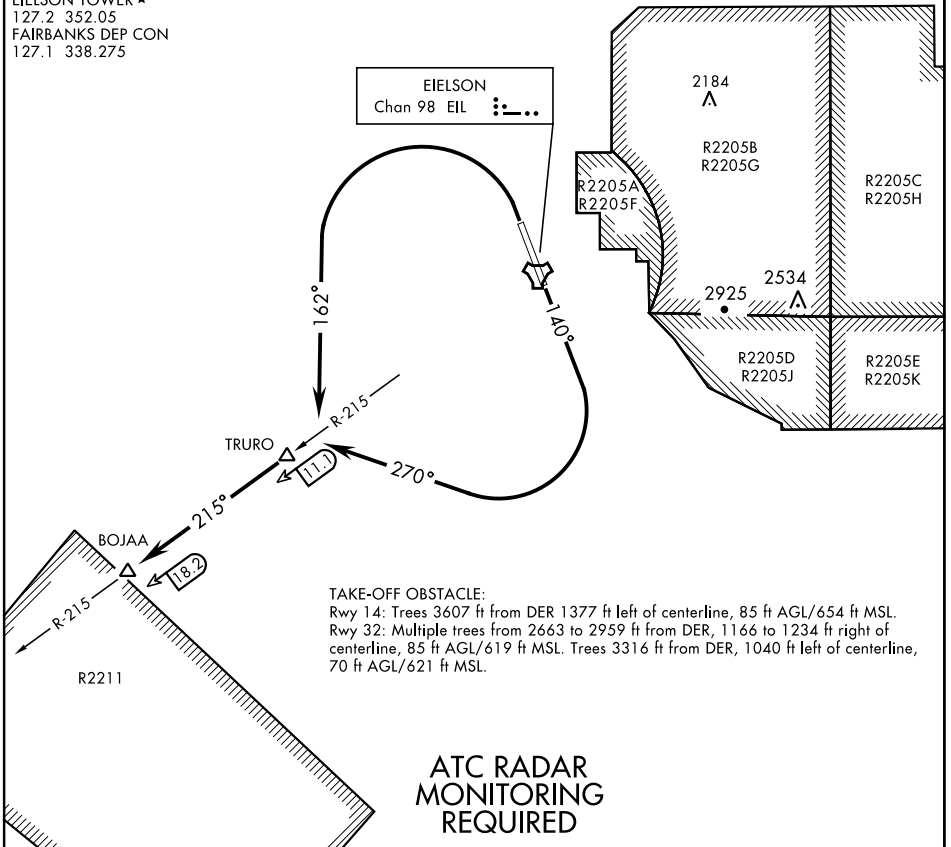
# BOJAA TWO DEPARTURE (BOJAA2•BOJAA)

EIELSON AFB (PAEI)

FAIRBANKS, ALASKA

ATIS ★ 119.9 273.5  
 CLNC DEL 343.7  
 GND CON 121.8 275.8  
 EIELSON TOWER ★ 127.2 352.05  
 FAIRBANKS DEP CON 127.1 338.275

SL-1729 [USAF]



### DEPARTURE ROUTE DESCRIPTION

**TAKE-OFF RWY 14:** Climb heading 140° to 1100, then climbing right turn to heading 270°, intercept EIL TACAN R-215 outbound to BOJAA. Climb and maintain 3700 or assigned altitude.

**TAKE-OFF RWY 32:** Climbing left turn to heading 162° to TRURO then continue outbound on EIL TACAN R-215 to BOJAA. Maintain at or above 3700 or assigned altitude.

# BOJAA TWO DEPARTURE (BOJAA2•BOJAA)

Orig 26MAR20

FAIRBANKS, ALASKA  
EIELSON AFB (PAEI)

AK, 16 JUL 2020 to 10 SEP 2020

AK, 16 JUL 2020 to 10 SEP 2020