

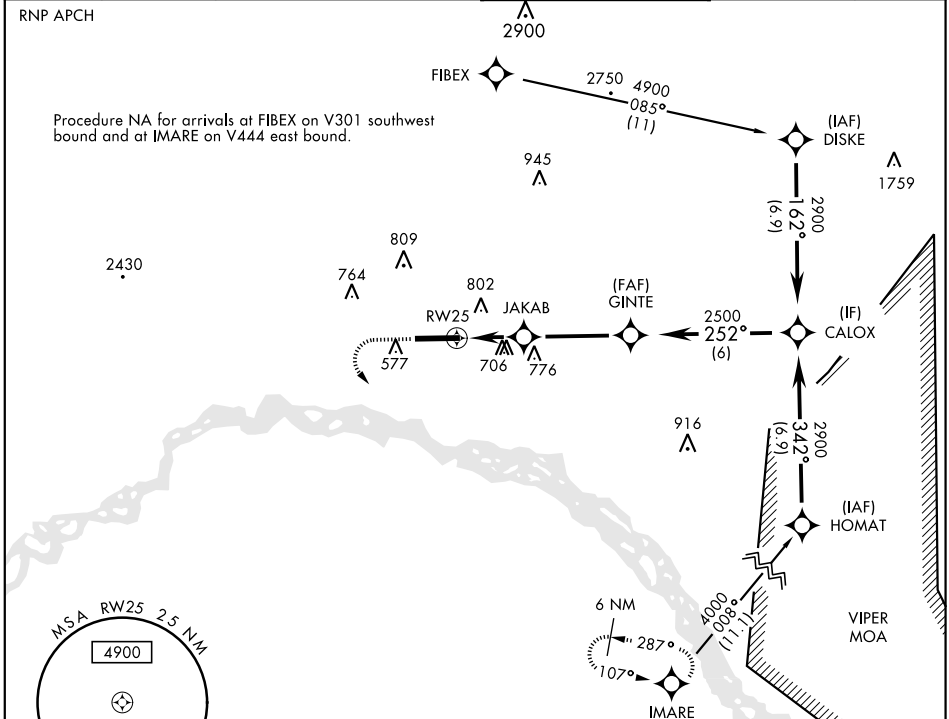
# RNAV (GPS) RWY 25

APCH CRS	Rwy ldg	8575
252°	TDZE	449
	Arprt Elev	449

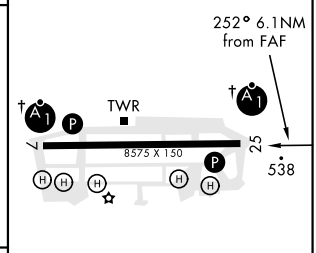
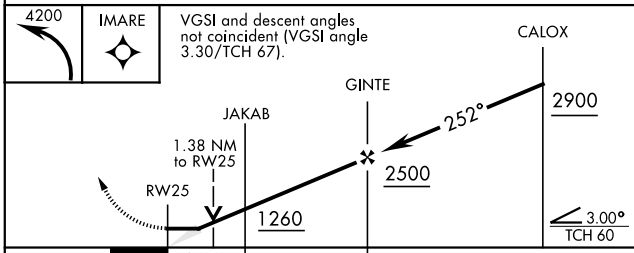
AL-1219 [USA]

LADD AAF (PAFB)

* Circling not authorized N of Rwy 7-25.			MISSED APPROACH: Climbing left turn to 4200 direct IMARE and hold.		
ATIS ★ <b>134.25</b>	ASOS <b>119.275</b>	FAIRBANKS APP CON <b>127.1 251.1</b> (360°- 179°) <b>125.35 363.2</b> (180°- 359°)	LADD TOWER ★ <b>125.0</b> (CTAF) <b>284.6</b>	GND CON <b>121.7 263.15</b>	ASR/PAR



ELEV	449	TDZE	449
------	-----	------	-----



CATEGORY	A	B	C	D
LNAV MDA	1000-½	551 (600-½)	1000-1¼	551 (600-1¼)
CIRCLING*	1000-1 551 (600-1)	1040-1 591 (600-1)	1080-1¾ 631 (700-1¾)	1160-2¼ 711 (800-2¼)

HIRL Rwy 7-25

# RNAV (GPS) RWY 25

AK, 16 JUL 2020 to 10 SEP 2020

AK, 16 JUL 2020 to 10 SEP 2020