

TULSA EIGHT DEPARTURE

**TOP ALTITUDE:
15000**

D-ATIS
124.9 377.2
TULSA TOWER
118.7 257.8 (Rwy 18R-36L)
121.2 310.8 (Rwys 18L-36R, 8-26)
CLNC DEL
134.05 284.7
TULSA DEP CON
124.0 338.3

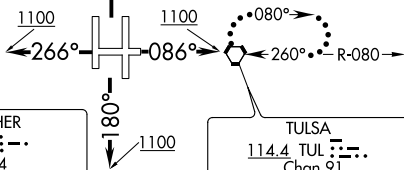
CHANUTE
109.2 CNU Chan 29
N37°37.57'-W95°35.61'
L-10-15, H-5

FARMINGTON
115.7 FAM Chan 104
N37°40.41'-W90°14.04'
L-16, H-5

NEOSHO
117.3 EOS Chan 120
N36°50.55'-W94°26.14'
L-16, H-6

SPRINGFIELD
116.9 SGF Chan 116
N37°21.36'-W93°20.04'
L-16, H-5

BARTLESVILLE
117.9 BVO Chan 126
N36°50.06'-W96°01.11'
L-15, H-6



RAZORBACK
116.4 RZC Chan 111
N36°14.79'-W94°07.28'
L-16, H-6

KINGFISHER
114.7 KF Chan 94
N35°48.32'-W98°00.24'
L-15, H-6

TULSA
114.4 TUL Chan 91
N36°11.78'-W95°47.29'
L-15, H-6

FORT SMITH
110.4 FSM Chan 41
N35°23.31'-W94°16.29'
L-16, H-6

WILL ROGERS
114.1 IRW Chan 88
N35°21.52'-W97°36.55'
L-15, H-6

ARDMORE
116.7 ADM Chan 114
N34°12.70'-W97°10.09'
L-17, H-6

MAVERICK
113.1 TTT Chan 78
N32°52.15'-W97°02.43'
L-17, H-6

TAKEOFF MINIMUMS
Rwys 8, 18L/R, 36L/R: Standard.
Rwy 26: Standard with minimum
climb of 225' per NM to 2900.

NOTE: Chart not to scale.

DEPARTURE ROUTE DESCRIPTION

TAKEOFF RUNWAYS 18L/R: Climb on heading 180° to 1100, then...

TAKEOFF RUNWAYS 36L/R: Climb on heading 360° to 1100, then...

TAKEOFF RUNWAY 8: Climb on heading 086° to 1100, then...

TAKEOFF RUNWAY 26: Climb on heading 266° to 1100, then...

...continue on assigned heading for RADAR vectors to assigned route, maintain 15000 or assigned lower altitude, expect further clearance to filed altitude 10 minutes after departure.

LOST COMMUNICATIONS: Proceed to and hold east of TUL VORTAC on the 080° radial. Climb to 15000 feet or lower requested altitude, then proceed on course on filed route. Climb to requested altitude when established on course.