

LENNI THREE ARRIVAL

AL-321 (FAA)

LUKE AIR FORCE BASE (LUF)
GLENDALE, ARIZONA

ALBUQUERQUE CENTER
128.45 289.9
LUKE RAPCON *
118.15 363.125
LUKE TOWER *
119.1 379.9
ATIS *
134.925 269.9
METRO
267.4

DRAKE
114.1 DRK
Chan 88
N34°42.15'-W112°28.82'
L-8, H-4

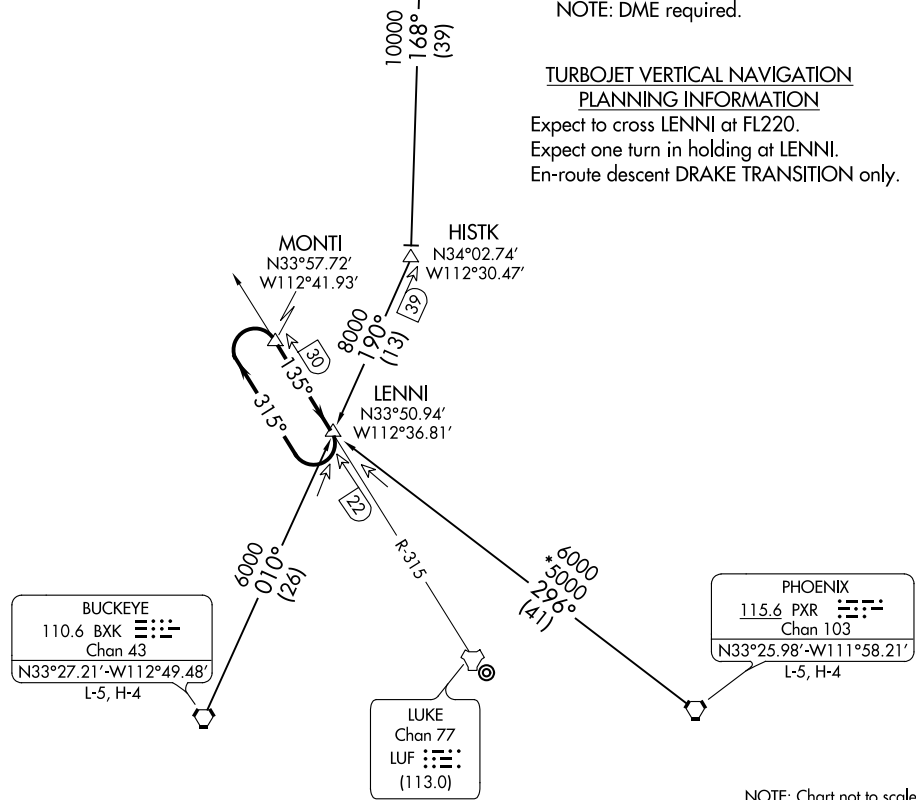
NOTE: Military Only.
NOTE: DME required.

TURBOJET VERTICAL NAVIGATION
PLANNING INFORMATION

Expect to cross LENNI at FL220.
Expect one turn in holding at LENNI.
En-route descent DRAKE TRANSITION only.

SW-4, 13 AUG 2020 to 10 SEP 2020

SW-4, 13 AUG 2020 to 10 SEP 2020



NOTE: Chart not to scale.

ARRIVAL ROUTE DESCRIPTION

BUCKEYE TRANSITION (BXX.LENNI3): From over BXX VORTAC via BXX R-010 to LENNI INT. Thence

DRAKE TRANSITION (DRK.LENNI3): From over DRK VORTAC via DRK R-168 and BXX R-010 to LENNI INT. Thence

PHOENIX TRANSITION (PXR.LENNI3): From over PXR VORTAC via PXR R-296 to LENNI INT. Thence

. . . . expect one turn in holding at LENNI INT followed by HI-TACAN/HI-ILS or LOC/DME to Luke AFB.

LENNI THREE ARRIVAL