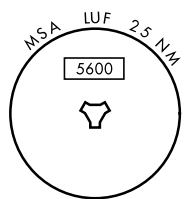
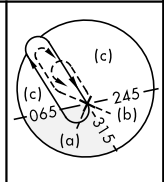
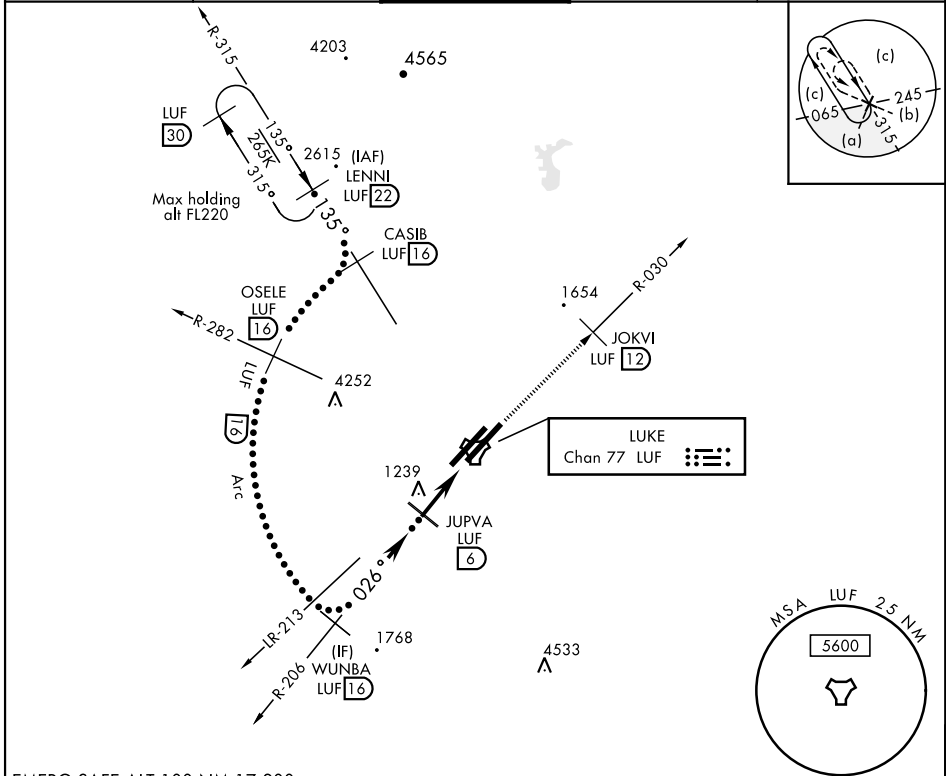


# HI-TACAN RWY 3R

TACAN LUF Chan <b>77</b>	APCH CRS <b>026°</b>	Rwy ldg TDZE Arpt Elev <b>9904</b> <b>1074</b> <b>1085</b>	JAL-321 [USAF]	LUKE AFB (KLUF)
<b>ALSF-1</b> 			<b>MISSED APPROACH:</b> Climbing to 4000, intercept LUF TACAN R-030 to 12 DME (JOKVI). Contact Luke APP CON.	

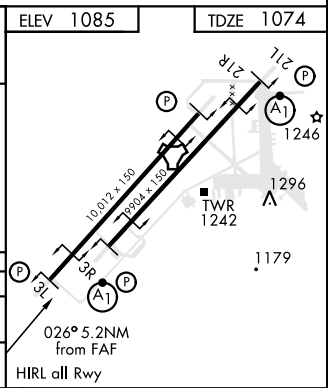
\* When ALS inop, increase vis to 1 1/4 miles.

ATIS * <b>134.925 269.9</b>	LUKE APP CON <b>118.15 363.125</b>	LUKE TOWER * <b>119.1 379.9</b>	GND CON <b>133.175 335.8</b>	CLNC DEL <b>126.25 273.475</b>
--------------------------------	---------------------------------------	------------------------------------	---------------------------------	-----------------------------------



EMERG SAFE ALT 100 NM 17,200

LENNI R-315 22	CASIB R-315 16	OSELE R-282 16	WUNBA R-206 16	JUPVA R-206 6	JOKVI LUF 12	ELEV 1085	TDZE 1074
12,000	7000	5000	2800	4000			
135°	3.05° TCH 51	Arc	026°	4.6			
CATEGORY	C	D	E	TACAN			
S-3R *	1500/40	426	(500-3/4)				
CIRCLING	NOT AUTHORIZED						
						026° 5.2NM from FAF	HIRL all Rwy



# HI-TACAN RWY 3R

SW-4, 13 AUG 2020 to 10 SEP 2020

SW-4, 13 AUG 2020 to 10 SEP 2020