


WAAS CH 50222 W05A	APP CRS 047°	Rwy Idg TDZE Apt Elev	7809 26 27
--	------------------------	-----------------------------	---------------------------------------

RNAV (GPS) Z RWY 5

NORFOLK INTL (O.R.F.)

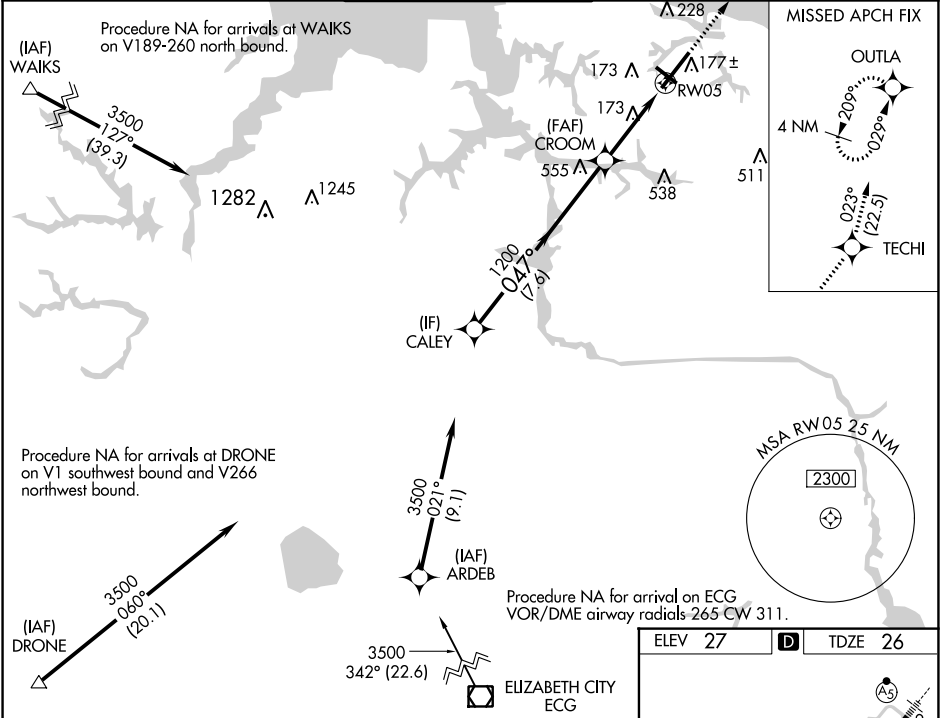
RNP APCH.

▼ For uncompensated Baro-VNAV systems, LNAV/VNAV NA below -9°C or above 54°C.
 ▲ For inop ALS, increase LNAV/VNAV all Cats visibility to RVR 4500 and LNAV Cats C and D visibility to RVR 6000. **RVR 1800 authorized with use of FD or AP or HUD to DA.

MALSR 

MISSED APPROACH: Climb to 2000 direct TECHI then on track 023° to OUTLA and hold.

ATIS 127.15	NORFOLK APP CON 118.9 353.7	NORFOLK TOWER 120.8 257.8	GND CON 121.9	CLNC DEL 118.5
-----------------------	---------------------------------------	-------------------------------------	-------------------------	--------------------------

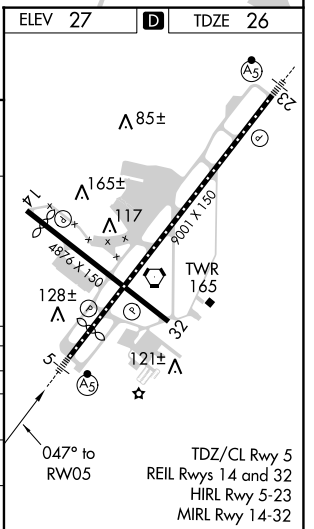


VGSI and RNAV glidepath not coincident (VGSI Angle 3.00/TCH 71). CALEY

3500	047°	CROOM	1200	1.1 NM to RW05	* LNAV only.
GP 3.00° TCH 56					
		7.6 NM	2.4 NM	1.1 NM	

2000	TECHI	tr 023°	OUTLA
------	-------	---------	-------

CATEGORY	A	B	C	D
LPV DA**		226/24	200 (200-½)	
LNAV/VNAV DA		306/24	280 (300-½)	
LNAV MDA	440/24	414 (500-½)	440/40	414 (500-¾)
CIRCLING	480-1 453 (500-1)	540-1 513 (600-1)	540-1½ 513 (600-1½)	900-2¾ 873 (900-2¾)



NE-3, 13 AUG 2020 to 10 SEP 2020

NE-3, 13 AUG 2020 to 10 SEP 2020